

COASTAL STUDIES

IN ADDITION TO THE TRADITIONAL CLASSROOM, MANY GEOGRAPHY COURSES OFFER THE OPPORTUNITY TO VISIT THE 'LIVING CLASSROOM' OF THE OCEAN, BAY, NUTMEG, EMPIRE & GARDEN STATES



GLACIOLOGY OF NAPATREE POINT, WATCH HILL, RI

HISTORICAL AND CULTURAL GEOGRAPHY OF BOSTON HARBOR AND THE BOSTON HARBOR ISLANDS & THE USS CONSTITUTION



COASTAL EROSION AND BEACHES AT MOHEGAN BLUFFS BLOCK ISLAND, RI



TOOLS FOR EXPLORING THE OCEAN DEPTHS WOODS HOLE OCEANOGRAPHIC INSTITUTION

GEOGRAPHY COURSES OFFERED

- Introduction to Geography
- Introduction to Environmental Studies
- World Regional Geography
- Mapping Our Changing World
- Geographic Information Systems I
- Earth's Physical Environments
- Disaster Management
- Globalization, Cities and Sustainability
- Natural Resource Management
- Historical Geography of the United States
- Geography of Rhode Island
- Coastal Geography
- Geographic Information Systems II
- New England Landscapes Pre-1900
- New England Landscapes Since 1900
- Urban Political Geography
- People, Houses, Neighborhoods, and Cities
- Metropolitan Providence: Past, Present, and Future
- Senior Seminar: Theory and Research
- Internship in Geography
- Reading Course in Geography
- Directed Study in Geography



Full-Time Geography Faculty:



Mark Motte
Professor, Director of the Geography Program
Craig-Lee Hall 135
(401) 456-8881
mmotte@ric.edu



Seth Dixon
Assistant Professor, Geography Program
Craig-Lee 136
(401) 456-8378
sdixon@ric.edu

Adjunct Geography Faculty:
Jennifer Bonin: jbonin1@ric.edu
Mary Grady: marygrady@cox.net
Gerard Hamel: ahamel@cox.net



RHODE ISLAND COLLEGE GEOGRAPHY PROGRAM

- EARTH'S PHYSICAL LANDSCAPES
- THE NATURAL ENVIRONMENT
- MAPS AND G.I.S.
- REGIONS, CITIES & TOWNS
- WEATHER & CLIMATE
- DISASTER MANAGEMENT
- CULTURAL & HISTORICAL GEOGRAPHY
- GLOBALIZATION AND GEOPOLITICS
- SUSTAINABILITY & GREEN POLICIES
- COASTAL STUDIES
- URBAN & NEIGHBORHOOD PLANNING



RHODE ISLAND COLLEGE

DISASTER MANAGEMENT



APPROACHES TO EMERGENCY MANAGEMENT AND DISASTER PREPAREDNESS AROUND THE WORLD, WITH NUMEROUS LOCAL FIELD WORK AND SITE VISIT OPPORTUNITIES. STUDENTS ARE ENCOURAGED TO EARN ON-LINE CERTIFICATIONS OFFERED BY FEDERAL AGENCIES



HURRICANE SANDY DEVASTATION IN NEW JERSEY



FOX POINT HURRICANE BARRIER



RHODE ISLAND EMERGENCY MANAGEMENT AGENCY



PROVIDENCE EMERGENCY MANAGEMENT AGENCY

CONTACT US:
CALL DR. MARK MOTTE, GEOGRAPHY PROGRAM DIRECTOR, WITH ANY QUESTIONS YOU MAY HAVE ABOUT OUR PROGRAM, COURSE OFFERINGS, INTERNSHIPS AND POST-GRADUATION CAREER OPTIONS (401) 456-8881 OR MMOTTE@RIC.EDU

URBAN STUDIES & PLANNING

A DYNAMIC SET OF COURSES DESIGNED TO EXAMINE URBAN REGIONS AROUND THE WORLD AS WELL AS NEARBY CITIES, WITH A STRONG EMPHASIS ON REAL-WORLD, HANDS-ON PROJECTS

OMNI TOWER



WATERFIRE PROVIDENCE



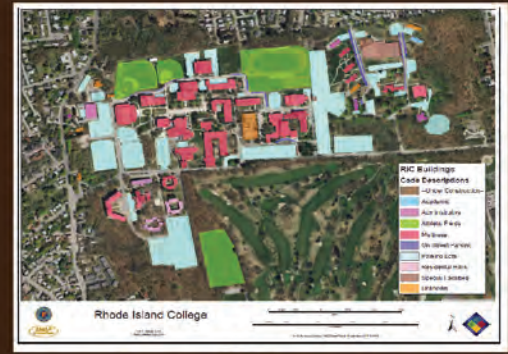
PROVIDENCE IWAY CONSTRUCTION



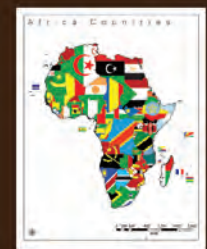
RHODE ISLAND STATE HOUSE

MAPPING AND GEOGRAPHIC INFORMATION SYSTEMS

GIS IS A KEY TOOL USED BY GEOGRAPHERS AND PROFESSIONALS IN MANY OTHER DISCIPLINES. WE ENABLE OUR STUDENTS TO TRANSITION FROM INTRODUCTORY MAPPING SKILLS TO PROFICIENCY THAT MAY LEAD TO GIS CERTIFICATION. INTERNSHIPS AND FIELD PROJECTS ARE OFFERED



INTERACTIVE RIC CAMPUS MAP FOR THE PROVIDENCE EMERGENCY MANAGEMENT AGENCY



CREATIVE CARTOGRAPHY



SATELLITE IMAGERY INTERPRETATION AND DESIGN

JOIN US AS A GEOGRAPHY MAJOR OR MINOR STUDY THE DYNAMIC WORLD AROUND US IN ALL ITS RICH ENVIRONMENTAL AND CULTURAL DIVERSITY. COME MEET WITH US IN THE GEOGRAPHY PROGRAM DEPARTMENT OF POLITICAL SCIENCE RHODE ISLAND COLLEGE