



**RHODE ISLAND
COLLEGE**

SAPINSLEY HALL

Part of the Nazarian Center for the Performing Arts

TECHNICAL SPECIFICATIONS

600 Mount Pleasant Avenue, Providence, RI, 02908-1991

Brian K. White – Operations Manager
401.456.8195
bwhite@ric.edu

Robert Ferland – Technical Director
401.456.4786
rferland1@ric.edu

Jon Rosa – Events Manager
401.456.8271
jrosa@ric.edu

Main Office: 401.456.8194, Fax: 401.456.8269



Rhode Island College
600 Mount Pleasant Avenue
Providence, RI 02908

www.ric.edu
Revised December 11

Sapinsley Hall shares its home with two other theatres. As such, much of the equipment in use is shared by the three theatres. It is for this reason that we ask you to be as informative and concise as possible as to your needs when talking to our staff representatives. Although we will always try to accommodate the needs of your production, there is little we can do on some matters without advanced notice.

As always, we will try our best to accommodate your needs. Feel free to contact the theatre at any time with any questions you may have.

The information contained in this packet is supplied according to the best of our ability. It should be clearly understood that any critical dimensions must be checked on site. Some items may not be available, please check with the operations manager.

This packet in no way represents a legally binding contractual agreement.



Rhode Island College
600 Mount Pleasant Avenue
Providence, RI 02908

www.ric.edu
Revised December 11

General Information

Technical Services

Operations Manager
Brian White
401.456.8195
BWhite@ric.edu

Technical Director
Rob Ferland
401.456.4786
RFerland1@ric.edu

Programming

Director
Michael Ducharme
401.456.8194
Mducharme@ric.edu

Coordinator
Kathi Bacon
401.456.8194
KBacon@ric.edu

Box Office

Paul Cotter
456.456.8388
PCotter@ric.edu

Security

Fred Ghio
401.456.8201
fggio@ric.edu

Catering

Vincent Flemming
401.456.8207
vflemming@ric.edu

Taxi Services:

Yellow Cab 401.941.1122
Providence Cab
401.521.4200

Area Hotels

Hilton Providence
21 Atwells Avenue
401.709.0333
2.5 miles SE of theatre

Radisson Hotel
220 India Street
401.272.5577
5 miles SE of theatre

Marriott Providence
1 Orms Street
401.272.2400
2.5 miles SE of theatre

Hotel Providence
311 Westminster Street
401.861.8000
3 miles SE of theatre

Restaurants

Wendy's
401.521.4668
850 Manton Avenue

Sicilia Pizza
401.273.9222
181 Atwells Ave

Spirito's Resteraunt
401.228.8500
477 Broadway

Thai Star
401.421.5840
1088 Chalkstone Ave

Fast Food
Open 11a-2a

Great pizza
Open 10a – 2a

High end Italian fare
Open 11a-4p, 4p-10p
closed Sun and Mon

Thai Food
Open 11a-10p No Tue

Area Stores and Services

Laundromat
Admiral Suds
Corner of Admiral and
Hawkins
Drop off service

Pharmacy
CVS
401.453.5612
935 Manton Ave
5.4 miles SW of theatre

Superstore
Walmart
401.272.5371
51 Silver Spring Street
2.8 miles E of theatre

Supermarket
Super Stop and Shop
401.453.3899
850 Manton Avenue
.5 miles SW of theatre

Emergency Numbers: ALL EMERGENCIES – 8201

911 calls not routed through security may not respond to the appropriate building in a timely fashion

Campus Security: 401.456.8201 – Rhode Island College

Fire 401.274.3344

Police 401.272.3121

Hospital Emergency Room: 401.456.3161, 200 High Service Avenue, North Providence, RI 02904

Chiropractic Clinic: 401.751.6568, 120 Wayland Ave, Providence, RI 02906

Massage Therapist: 401.751.4100, 120 Wayland Ave, Providence, RI 02906

Dental Clinic: 401.444.0430, 557 Broad St, Providence, RI 02907

Parking: Single Trailers can be left in loading dock. All busses and cars can be parked on road adjacent to loading dock.



Rhode Island College
600 Mount Pleasant Avenue
Providence, RI 02908

www.ric.edu
Revised December 11

Directions

From North

Take I-95 South to Providence; exit at Atwells Avenue. Turn right (west) onto Atwells Avenue and follow for 1.5 miles, then turn right (at hilltop) onto Mt. Pleasant Avenue. Entrance to the College is 1.2 miles ahead on the left.

From Northwest

Take RI 146 South to I-95 South, follow directions provided in "From North" above.

From West

Take US-44 East past the Centredale section of North Providence. Follow US-44 (Smith St.) for approximately one mile to Fruit Hill Ave. Bear right onto Fruit Hill Ave. to the campus entrance one mile ahead on your left.

Alternate from West

Follow US-6 East toward Providence. Or take US-44 East to I-295 South and exit to US-6 East. Follow US-6 East to RI-128 Killingly Street exit. Turn left onto Killingly Street and continue to end. Turn right onto Manton Avenue and follow to traffic light. At light, turn left onto Fruit Hill Avenue and bear right at church. Entrance to the campus is approximately one-half mile ahead on the right.

From South and East

From the south, take I-95 to Providence, and from the east, take I-195 West to I-95 North to Providence. Take Broadway exit to second traffic light, turn left onto Atwells Ave. and follow directions provided in "From North" above.

Alternate from South

Take I-295 North (left Lanes) at the I-95 split. Take US-44 East exit (Centredale/Johnston). Follow directions provided in "From West" above.

From the State House

Follow Smith Street (US-44 West) for approximately 2 miles to Cathedral Avenue. Turn left onto Cathedral Avenue and follow to Mt Pleasant Avenue. Turn right. The entrance to the campus is the first left.



Management

Production Room: None readily available – Can be talked about upon request

Green Room: Located directly behind the Stage house. Approximately 230 Sq. Ft.

Stage Manager's Console: No permanent console. Production intercom, page mic, and Unison LCD are located stage left.

Rehearsal Rooms: Dependent upon schedule – to be talked about upon request

Crew: Paid student staff

Handicapped Access: Hall is ADA Accessible to 2000 code.

Policies: House usually opens ½ hour to curtain –

Announcement must be played at curtain and after all intermissions denoting locations of exit doors and other house polices.

All food sold must be contracted through the college.

Prior consent required for all atmospheric effects such as smoke and haze.

Building is a smoke free environment; all smoking must happen 50' (15m) from building doors.



Load-in area

Dimensions: Main loading door is 8' wide x 10' high (2.4m x 3m). Loading door opens into loading area 21' long x 18' wide. This loading area then opens into a hallway, or the Scene Shop. There are two loading paths to Sapinsley Hall, the first is a 90° left turn off the loading area, and from the main loading door to stage through standard 34" Doorway this is approximately 100' of hallway. The Second is through the loading area and into the scene shop and is also approximately 100' of travel through oversized doors. Please take this into account if you are loading very long pieces of scenery through.

Loading dock can accommodate one truck at a time.
Standard 53' trucks will have to set the trailer on landing gears and park cab beside the trailer.

Please take note if you are loading tall scenery using a ramp. Due to the short run of land between the road and the main loading door standard trailer ramps, if used, will occupy some space inside the loading area. Not only will this take up floor space but it will also decrease the height available in this doorway.

Loading dock can accommodate 1 full size van in addition to the truck, and cab in the loading dock area.

Map: See attachment



Carpentry

Seating: *Sapinsley Hall*--420 seats, 10 wheel chair accessible

Seating Chart: See Attachment

Stage Dimensions:

Proscenium: 45' 6" wide x 23'-8" high (to acoustical panel) (13.9m x 7.2m), Stage is 28' 9" deep (8.5m), Apron below plaster line at center is 3' 9" (1.1m)

Wing Space: Stage right is 6' (4.3m) wide –full stage depth, Stage left is 7' (4.8m) wide - full stage depth. Obstructions stage left include fly ladder upstage and sprinkler pipe down stage.

Stage Width: 62'6" (20.4m) wall to wall 58'4" S.R. Wall to Fly Rail S.L

Grid Height: *NONE* 40' (13.1m) grid is only used for maintenance of clock tower above loft.

Orchestra Pit: Non-lift. 3' 7" (1m) below stage level.

Stage Height: 3' 7" (1m)m above house floor.

Stage Floor: Fir wood floor painted eggshell black in good condition – Improved stage screws, lag screws, drywall screws, and nails allowed. Floor must be plugged after use.

House Draperies (Soft Goods):

House Curtain: Main Drape Green two panel -w- fullness drape 1' 6" (0.45m) upstage of plaster line – Split down center but only flies and does not travel. Controlled manually from fly rail – High trim of drape is 18' 9" (5.7m) at bottom of drape (2) panels 28' wide x 16'6" high

Main Valance Green single panel -w- fullness drape 1' 0" (0.3m) upstage of plaster line Controlled manually from fly rail – High trim of drape is 18' 9" (5.7m) at bottom of drape 52' wide x 12' high

Legs: 5 sets, black velour, 8' wide x 22' high (4m x 7.6m), sewn flat
2 sets, black velour, 8' wide x 30' high (4m x 9.1m), sewn flat

Borders: 5 Panels, black velour, 54' wide x 10' high (13.7m x 3m), sewn flat

Full Stage: 1, black velour, two panels each 33' wide x 22' high (10m x 6.7m), sewn flat
2 Panels, black velour, 25' wide x 21' high (13.7m x 3m), sewn flat



Scrims: 1, black sharktooth, 54' wide x 22' high (13.7m x 6.7m)

Cyclorama: 1, natural, seamless muslin, 54' wide x 30' high (13.7m x 9.1m)

Line Set Data:

Line Schedule: See Attachment

Working Height of Battens: Effective high trim on lines 39'-6" (12m) above the deck. Low trim on all lines is 24" (.6m) above deck

Battens: 1 thru 26 – 54' battens (13.7m), schedule 40 pipe, Lines 27 thru 29 48' all are 1 ½" ID pipe.

Type: All lines are single purchase, "T" Track counterweight.

Arbor Capacity: See line schedule

Available Weight: 11,160 lbs. (5062kg) available at loading gallery (excluding pipe weights) – 80 lbs (36kg) available at pin rail.

Winch Capacity: None available

Loading Gallery: Stage left, 36' 7" above stage floor (11.2m) - Access from ladder stage right

Pin / Locking Rail: Stage left, at floor level.

Support Areas:

Crossover: Passage behind upstage wall through Orchestra Shell area on SL and upstage door SR– Requires going through standard sized doorways – Same floor level

Access: From front of house through stage right public hallway.

Shop Area: Shop area of common goods (e.g., flammables cabinet, sink, brooms...) located 100' away from backstage adjacent to loading area and Auditorium in Roberts hall scene shop. Full scene building shop including all major woodworking and metal tools available upon request on a limited basis.

Storage: Limited storage available in backstage hallway and other various locations



Notes: House cycloramas hang flat and do not curve –



Rhode Island College
600 Mount Pleasant Avenue
Providence, RI 02908

www.ric.edu
Revised December 11

Lighting

Power: None readily available for touring gear racks. 20 amp Edison outlets are located around stage.

Dimmers: 265 Total - 100 ETC SENSOR dimmers @ 2.4 kW for FOH (50 D20 Modules), 116 ETC SENSOR dimmers @ 2.4 kW for Onstage overheads (58 D20 Modules), 16 ETC SENSOR dimmers @ 2.4 kW for Floor pockets (8 D20 Modules), – 7 ETC SENSOR D20 spare and replacement dimmers available. All CEM Units are advanced features units.

Control Board: ETC, Express 250, located in control booth at rear of house – can also be located stage left or in the house

Houselights: Control locations throughout house and in lighting control booth via ETC Unison –w- lockout functions for FOH & Stage button stations – Lighting operator can control houselights

Circuits: Theatre mostly runs on portable Socapex cabling (19 pin 6 ckt) 2.4K.

Circuit Chart: See attachment

Front of House Transfer: None available

Front of House Positions: First Catwalk, 36' 6" throw (11.1m) at 45 degrees
Second Catwalk, 4' throw (7.3m) at 65 degrees
Third Catwalk, 36' 6" throw (11.1m) at 45 degrees
Front box booms, 44' throw (13.4m) at 40 degrees
Front Ladder, 71' throw (21.6m) at 20 degrees
All positions measured to center of plaster line with 90 degrees being down light

Equipment Inventory:

Front of House Instruments: 4 - Source Four 10° in back booms. 10 – Source Four 15°-30° zooms in front booms. All other positions can change to fit user needs. See note

Stage Instruments: See attached

Followspots: 1 Satellite Orbiter Spotlight, 6 inch color cut, located in catwalk rear of the house.

Hardware: 14 irises, 26 "A" pattern holders, 44 "B" pattern holders, 20 - 6.25" donuts, 10 - 7.5" donuts, 12 - 6.25" color extenders, 12 - 6.25" top hats, 12 - 7.5" half hats, 4 - 7.5" top hats, 9 - 7.5" barn doors, 24 - 10" barn doors, 16 wooden floor plates, Various tower and ladder options.



Cable: 2,255' (687m) stage pin cable in assorted lengths. – 2p&g, 12 gauge SJO. 2,224' (677m) multipin cable (mostly socapex). 36 two-fers. Variety of adapters available.

Film, Video, and Projection Equipment To be talked about upon request

Notes:

Additional BLUBITE running lights are available.

Also available is a remote video interface to feed the lighting board's monitor feeds to the tech table.

Personnel lift available to focus onstage units.

FOH fixtures are accessible via Catwalk or extension ladder.

Please be aware that the FOH follow spot is a very flat angle of approximately 15 degrees.

Overhead focusing is done with a GENIE AWP-25 Personnel lift.

All manufacturers requirements will be adhered to when using the lift, the lift does not move with the bucket in the air.

Sound

Power: None readily available for touring gear racks. 20 amp Edison outlets are located around stage.

Wiring: 2, proco 8 channel snakes x 4 return – One DSL and one DSR, enough cable to reach any point on stage

Distributed 12 Channels of XLR inputs around stage including floor pockets

Control Locations: Booth is at rear of house, house mix position is at rear of house just left of center and eliminates 3 seats from the house count. Easy access to power and transformer isolated line & mic signals.

Hearing Assist System: Sennheiser FM system – to be talked about upon request



Monitor/Paging System: Program can be made audible in the dressing rooms and house with paging capabilities, from DSL or Booth.

Production Communications: Clear-com, 2 channels wired base, Clear-Com wireless base w/4 wireless belt packs, 10 wired headsets. Call theatre if location of headset stations is needed.

Equipment Inventory:

Mixing Consoles: 1, Mackie SR-32X4, control room mixing console
1, DDA CS3 24/4/3, audience mixing console

Fixed Speakers: EAW components in center cluster & loge
EAW ASR 695 provided for left-right loudspeakers --3-way, bi-amped.

Portable Speakers: Electro-Voice SX 300 & SX 100 & SX80 speakers available

Microphones: 4 Shure SM-57, 4 Shure SM-58, 4 Audio-Technica ATM33A, 4 Electro-Voice RE-11,
2 Crown PCC-160, SHURE wireless SC-4 Receiver with Handheld 58 and SC1 Lav.

Playback: Please call theatre for current equipment inventory. CD, DAT, Tape, & MD are available.

Signal Processors: No Outboard Processors available, Melrin DSP is locked and controls house and delays.

Amplifiers: QSC CX 302 throughout, all located in Control Room

Cable: 1300' (396.2m) of XLR cable – 200' (61m) of ¼" phono cable - Variety of adapters available

Notes:



Props

Orchestra Pit: Non-lift. 3' 7" (1m) below stage level. 23' (7m) wide x 6' deep.

Music:

Chairs: 201, Shelby Willams, Model 5231-P, Black
87, Emeco, Discontinued, Brown with silver legs

Stands: 78 Manhasset model #48 black, Conductor's stand available (Wenger)

Stand Lights: Call theatre for number of operational music stand lights (around 15)

Choral Risers: 7 units, Wenger signature series, 4 steps

Conductor Podium: 1, Wenger podium – Upper can sit on top of base or be used separately
Base podium – 6" high 43"x 38" platform (15cm high 109x 97cm platform)
Upper podium – 6" high 32"x 38" platform (15cm high 81x97cm platform)

Orchestra Shell: 1 Wenger DIVA shell finished in mahogany (towers + Overhead units)
2 panels, Wenger series 61 rollaway acoustical shell

Platforms: 53 , 3'x8' (0.9x2.4m), Stageright decks; One side polytrac black, other side grey carpet
Stageright Z-80 frame system for height – 16 @ 8" high, 14@ 16" high, 20@ 24" high ,
12@ 32"- 40" high, 11 @ 48"- 78" high (adjustable heights)

Dance Floors: 4 rolls, 36'11"x 5'3" (11.2mx1.6m), Rosco vinyl dance floor, black/grey reversible, + 1 roll
@ 33'9" (10.2m) (for downstage plasterline)

6 rolls, 41' x 4'11" (12.5mx1.5m), Harlequin studio, black, + 1 roll @ 34' (10.4m)

Lecterns: 2, Van San Corp., President Series #700-L25, walnut finish with college emblem

Notes:



Wardrobe

Dressing Rooms: 2 dressing rooms with lighted mirrors, counter space and chairs for 12 stations in womens, 10 stations in mens.

Both are adjoined by shower rooms. Each shower room contains one shower stall, and lavatories, one sinks and a full-length mirror

Wardrobe Area: All wardrobe is usually dealt with in dressing rooms or in backstage area.

Irons: 1 steam iron

Ironing Boards: 1

Steamers: 1 Jiffy, model J-2, portable

Washers/Dryers: 1 washer, Maytag, W-1 automatic washer
1 dryer, Maytag, MD-1 6 cycle dryer
Free for use while theatre is open and located on 2nd floor.

Racks and Hangers: Hangers and rolling costume racks available upon request

Quick Change Booths: To be talked about upon request

Notes: Quick change booths must not effect egress lanes.



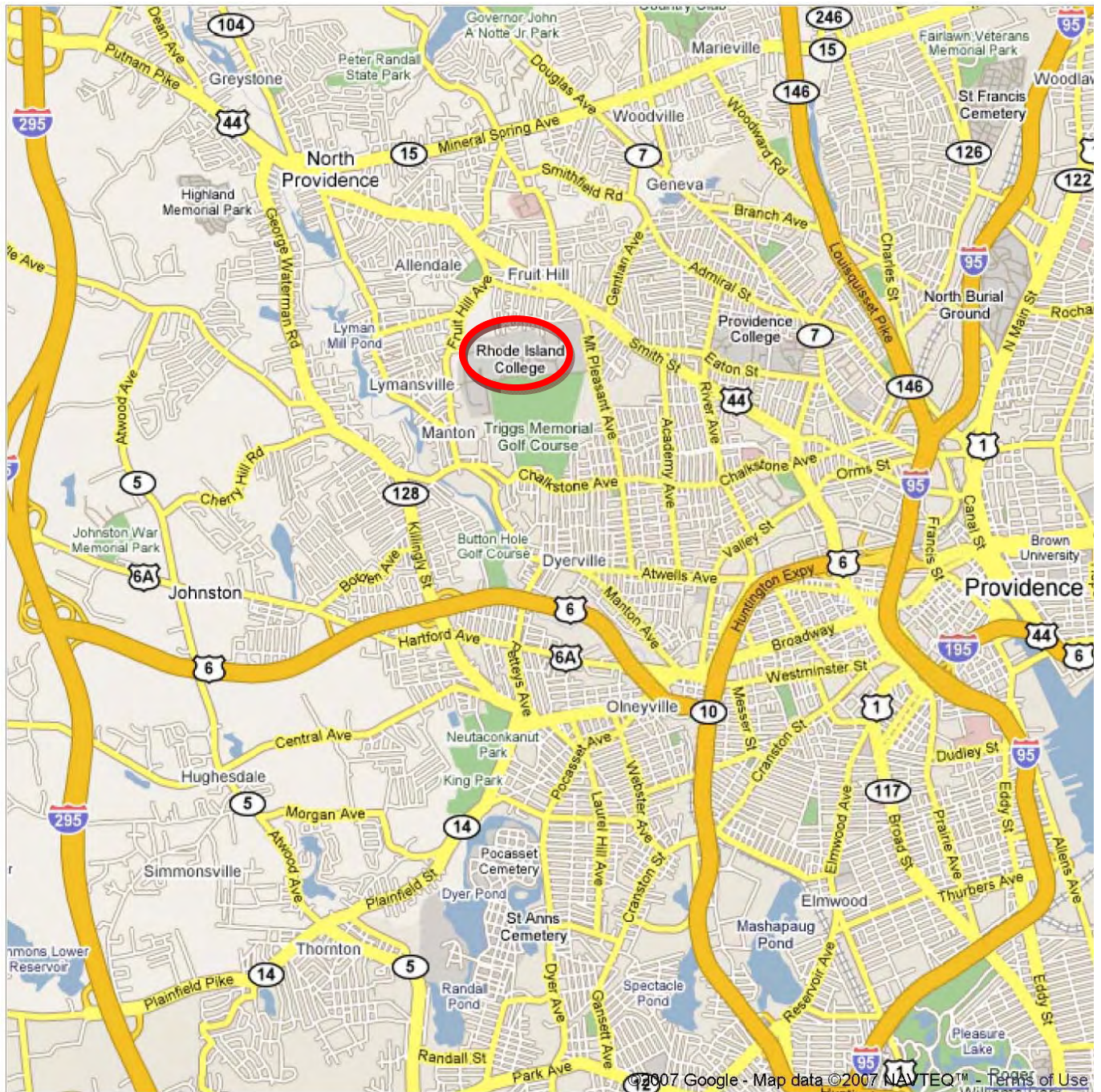
Attachments

- A:** Map detailing theatre location: Indicate North on map
- B:** Plan of theater, CAD / PDF also available
- C:** Section of theater, CAD / PDF also available
- D:** Line Plot/ Arbor Capacity of the theatre:
- E:** Seating chart
- F:** Side Light Towers
- G:** Scroller Color Chart (Includes House colors, and alternate backup scrolls)
- H:** Lighting Equipment Inventory
- I:** Omitted
- J:** Truck Map / Loading Dock route



Attachment: "A"

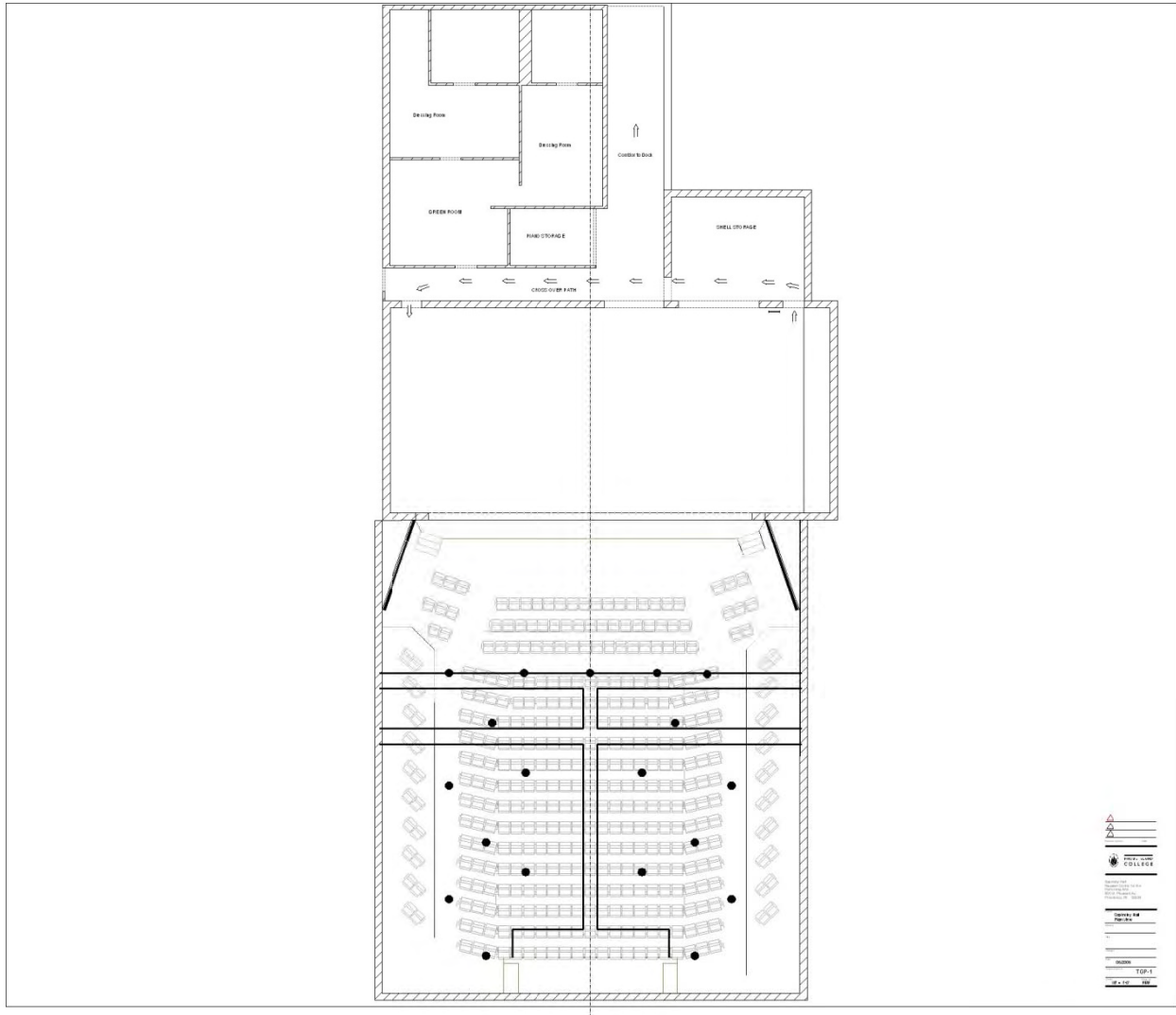
Top of Page is North.



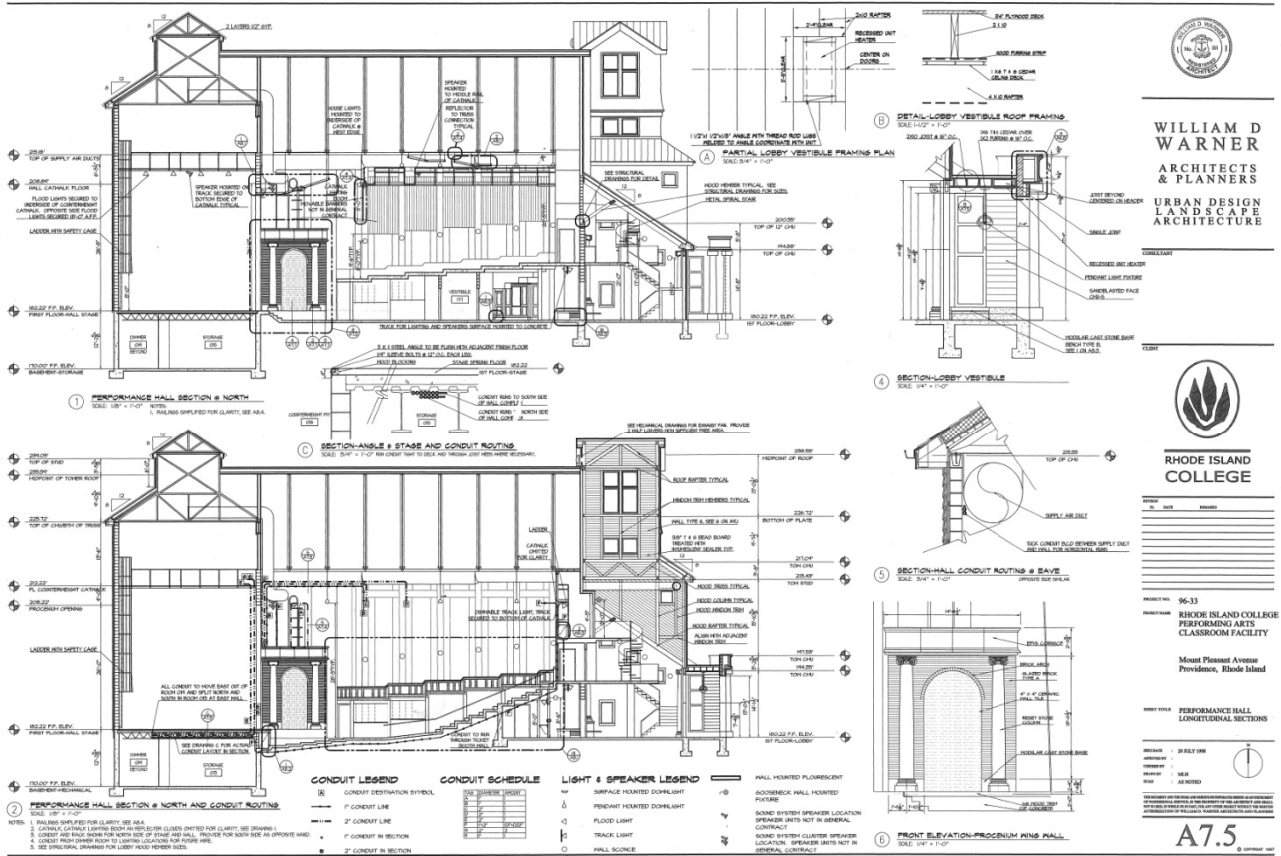
Rhode Island College
600 Mount Pleasant Avenue
Providence, RI 02908

www.ric.edu
Revised December 11

Attachment: "B"



Attachment: "C"



WILLIAM D WARNER ARCHITECTS & PLANNERS
URBAN DESIGN LANDSCAPE ARCHITECTURE

RHODE ISLAND COLLEGE

PROJECT NO: 96-33
PROJECT NAME: RHODE ISLAND COLLEGE PERFORMING ARTS CLASSROOM FACILITY
100 Mount Pleasant Avenue, Providence, Rhode Island

DATE: 28 JULY 2004
DRAWN BY: MEX
CHECKED BY: AS NOTED

A7.5



Rhode Island College
600 Mount Pleasant Avenue
Providence, RI 02908

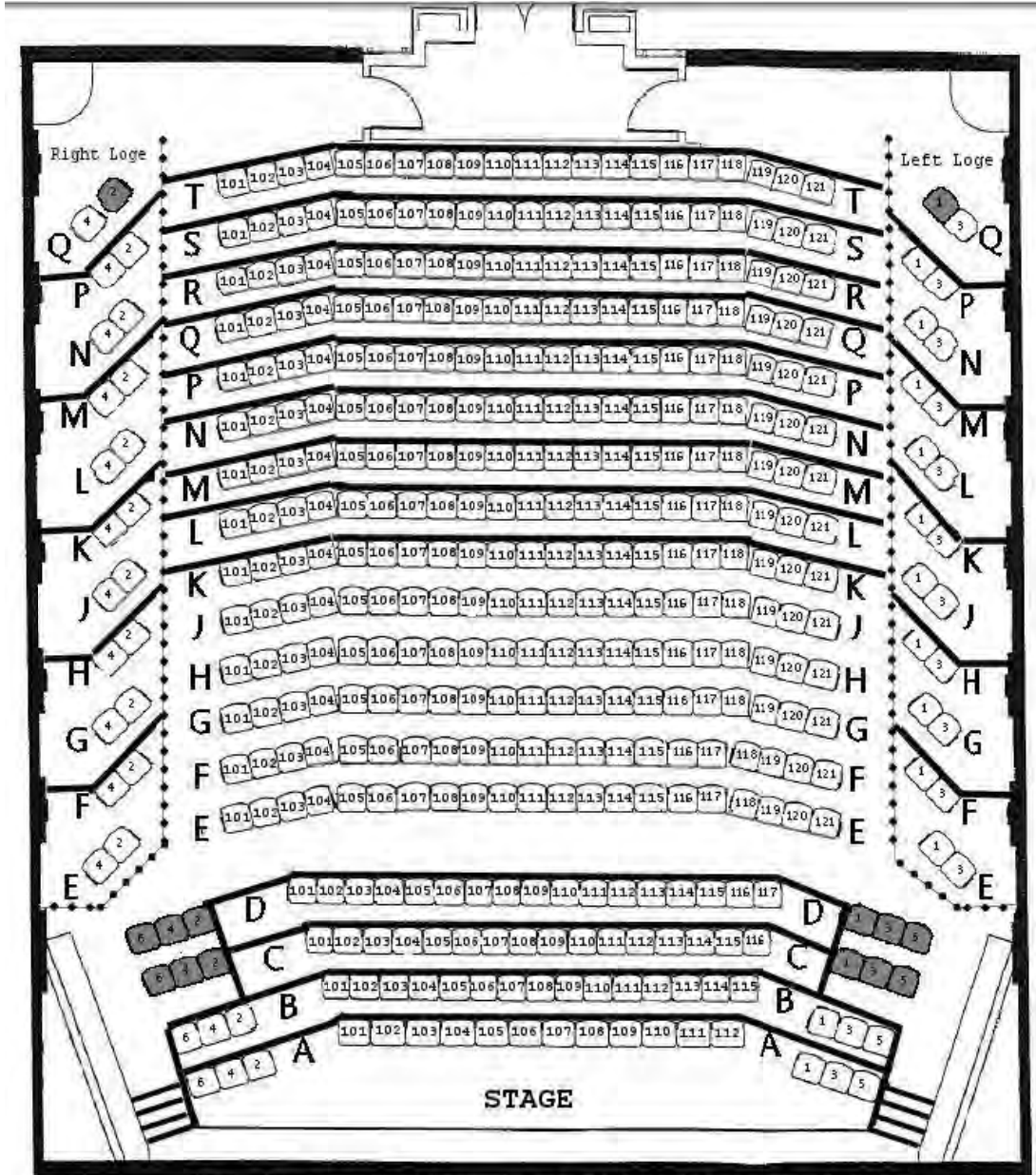
www.ric.edu
Revised December 11

Attachment: "D"Sapinsley Performance Hall **Stage Line Layout** Nazarian Center for the Performing Arts

#	Distance	Description	Arbor Length	Batten Length
1	1'-0"	Valance	8'	54'
2	1-6"	Main Drape	8'	54'
3	2'-0"		8'	54'
4	3'-0"	1 st Electric- Permanent	10'	54'
5	4'-0"		8'	54'
6	5'-0"		8'	54'
7	6'-0"		8'	54'
8	7'-0"	Orchestra Shell Ceiling- Permanent	8'	54'
9	8'-0"		8'	54'
10	9'-0"		8'	54'
11	10'-0"		8'	54'
12	11'-0"		8'	54'
13	12'-0"		8'	54'
14	13'-0"		8'	54'
15	14'-0"	Orchestra Shell Ceiling- Permanent	8'	54'
16	15'-0"		8'	54'
17	16'-0"		8'	54'
18	17'-0"		8'	54'
19	18'-0"		8'	54'
20	19'-0"		8'	54'
21	20'-0"		8'	54'
22	21'-0"	Orchestra Shell Ceiling- Permanent	8'	54'
23	22'-0"		8'	54'
24	23'-0"		8'	54'
25	24'-0"		8'	54'
26	25'-0"		8'	54'
27	26'-0"		8'	48'
28	27'-0"		8'	48'
29	28'-0"		8'	48'



Attachment: "E"

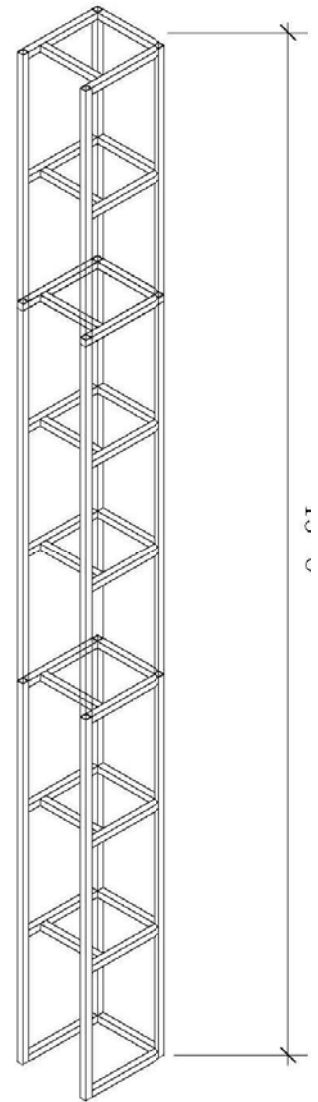
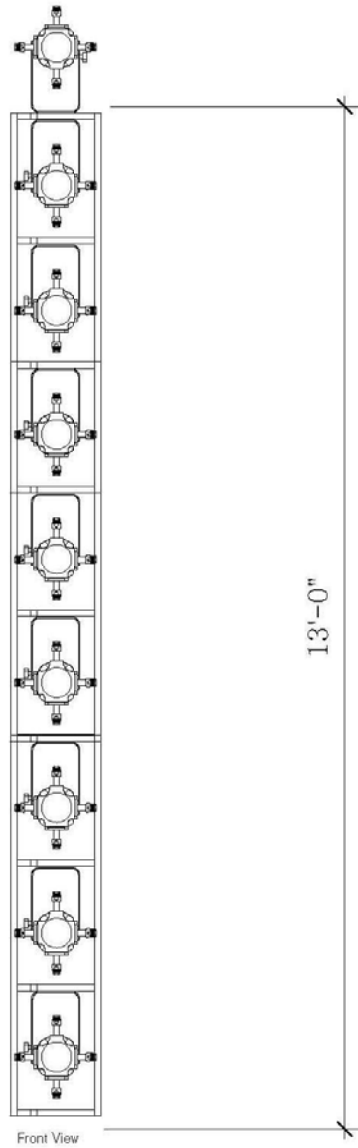


SAPINSLEY HALL - SEATING CAPACITY 422

- = REMOVABLE FOR WHEELCHAIR PATRONS
- = STEPS
- = Railing of side loge balconies



Attachment: "F"



Attachment: "G"

Current Color Scrolls

Alternate Color Scroll

Wybron/ Forerunner Color Scrollers				Wybron/ Forerunner Color Scrollers			
Frame	Level	Color	Name	Frame	Level	Color	Name
1	0%	R57	Lavender	1	0%	CLR	No Color
2	7%	R365	Tharon Blue	2	7%	L201	Full C.T. Blue
3	14%	R363	Aquamarine	3	14%	L117	Steel Blue
4	21%	R321	Sft. Gld. Amber	4	21%	L161	Slate Blue
5	28%	R09	Pale Amber	5	28%	R02	Bastard Amber
6	34%	R04	Md. Btd. Amber	6	34%	R09	Pale Amber Gold
7	42%	R31	Salmon Pink	7	42%	R33	No Color Pink
8	48%	R35	Lt. Pink	8	48%	R35	Light Pink
9	55%	CLR		9	55%	L180	Dark Lavender
10	61%	R325	Henna Sky	10	61%	R22	Deep Amber
11	68%	R27	Md. Red	11	68%	R47	Light Rose Purple
12	75%	R58	Deep Lavender	12	75%	R76	Light Green Blue
13	80%	R49	Md. Purple	13	80%	R49	Medium Purple
14	88%	R76	Lt. Gr. Blue	14	88%	R27	Medium Red
15	94%	R383	Sapphire Blue	15	94%	R83	Medium Blue
16	100%	R382	Congo Blue	16	100%	R91	Primary Green



Attachment: "H"

Lighting Equipment Inventory

Ellipsoidals:

- 116 Source 4 Bodies 575 HPL : 19°,26°,36°,50°
- 20 Source 4 Zooms 575 HPL 15°/30°
- 6 Source 4 Zooms 575 HPL 25°/50° Fresnels
- 24 Parnels 575 HPL
- 24 8" Altman 75 1000 BVT

Pars:

- 22 Altman Par 64 1000 FFN,FFP,FFR,FFS
- 36 Source 4 Pars 575 HPL VNSP, NSP,MFL,WFL

Striplights:

- 5 8' / X-Ray 300 EHM
- 5 8' Zip strips, 4 circuits, 75 watt narrow lamps

Cyc Lights:

- 6 Skycyc Altman 1000 FFT
- 12 Focusing Cyc 1000 FFT 6- single yokes, 6- double yokes, 4-triple yokes

Scoops:

- 2 18" Focusing 2000 BWF

Follow Spots:

- 2 Lycian 575 MSR 1209 Midget HP

Notes: This is a three venue facility. Additional equipment may be available. Please consult our Operations Manager or Technical Director.

Accessories and Effects:

- 16 Wybron Forerunner Color Scrollers 16 color
List of stock scroll colors available upon request
- 2 Rosco Indexing Double Gobo Rotators DMX Control
- 2 Rosco I-Cue intelligent mirrors DMX Control
- 14 Drop in Irises
- 1 5 Out Enhanced Isolated Splitter
- 1 5 Out Response Opto Splitter
- 24 Stage Pin Two-Fers



Rhode Island College
600 Mount Pleasant Avenue
Providence, RI 02908

www.ric.edu
Revised December 11

Attachment: "J"

Map View From Bing Maps.

North



Follow Red Highlight to Loading Dock Between Nazarian Center and Whipple Hall.
The Left hand turn from 1st ave is not possible with any vehicle over 40'.

View From North Looking South showing dock with a van in it.

SOUTH



Rhode Island College
600 Mount Pleasant Avenue
Providence, RI 02908

www.ric.edu
Revised December 11