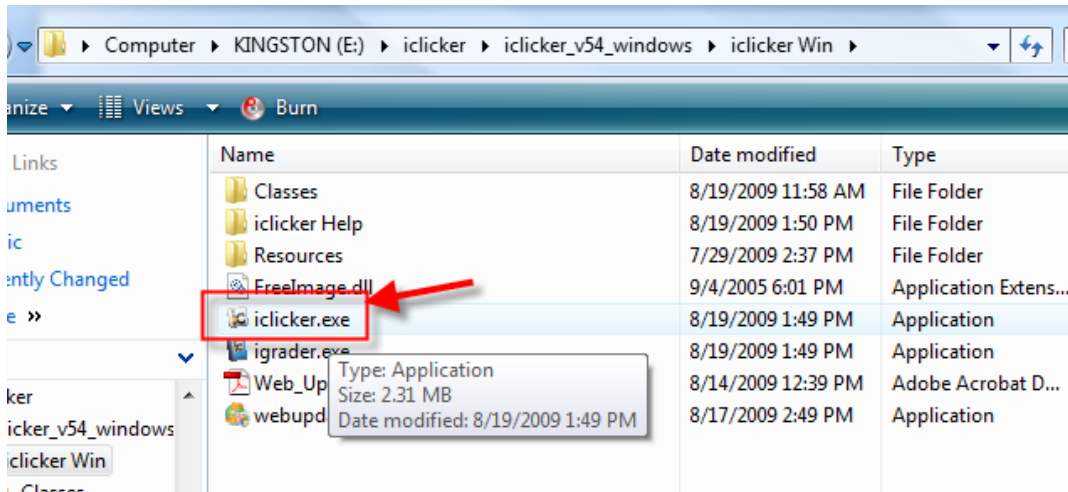
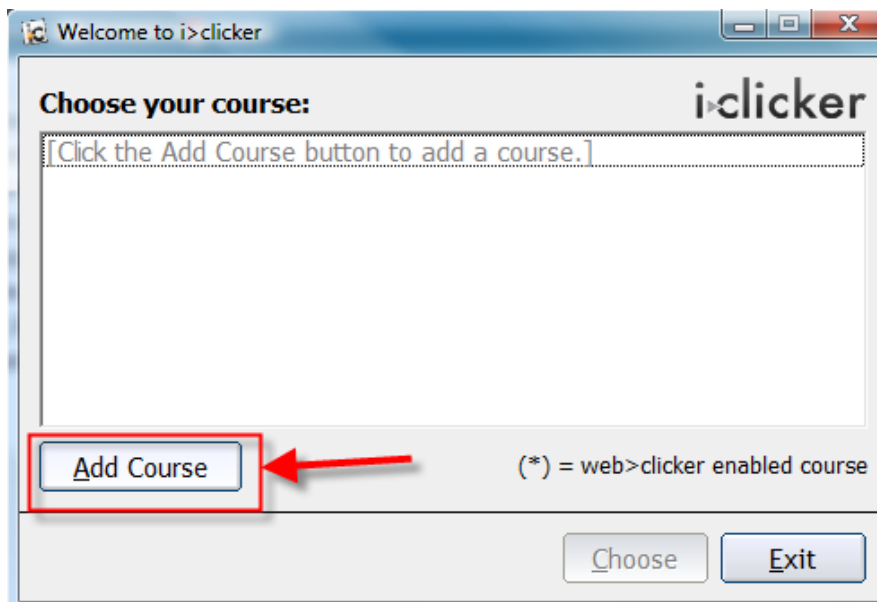


## Creating Your New iClicker Course

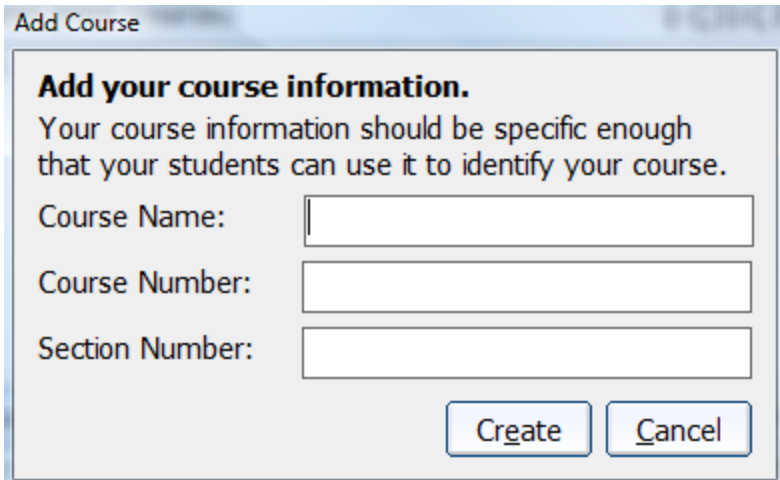
By Scott Badger and Pat Hetu



1. Go into the iclicker Win folder which is located in the iclicker\_v54\_windows folder.
2. Double-click iclicker.exe.



3. Click Add Course.



The image shows a dialog box titled "Add Course". It contains the following text and fields:

**Add your course information.**  
Your course information should be specific enough that your students can use it to identify your course.

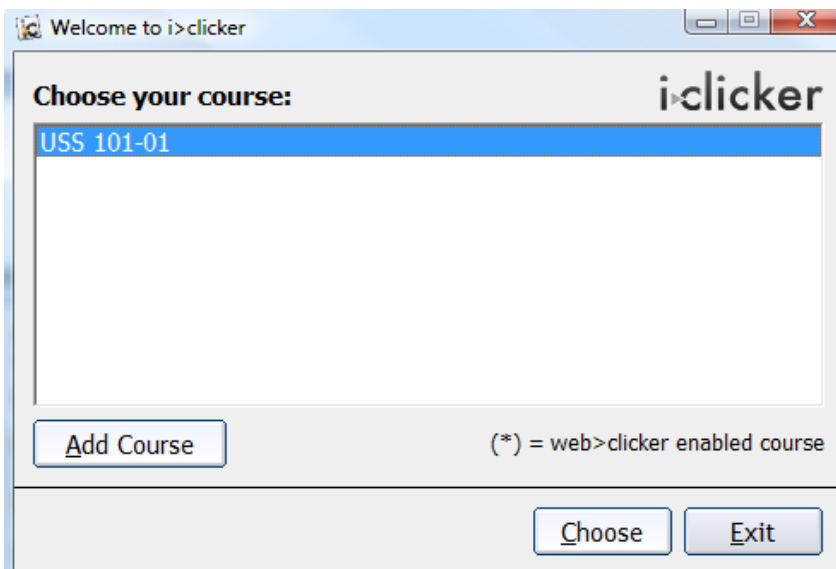
Course Name:

Course Number:

Section Number:

At the bottom right, there are two buttons: "Create" and "Cancel".

4. Enter in your course name and section. (Optional – enter in the course number)
5. Click Create.



The image shows a dialog box titled "Welcome to i>clicker". It contains the following text and fields:

**Choose your course:** i>clicker

USS 101-01

At the bottom left, there is a button labeled "Add Course". At the bottom right, there is a note: "(\*) = web>clicker enabled course".

At the very bottom, there are two buttons: "Choose" and "Exit".

6. Your course has been created.
7. Repeat steps 3-5 for each of your sections that you plan to use iclickers.