

2012 RI DD Employment and Day Activity Data Summary

Youth 24 & Under 2011-2012 Comparison

N2011 = 3,542

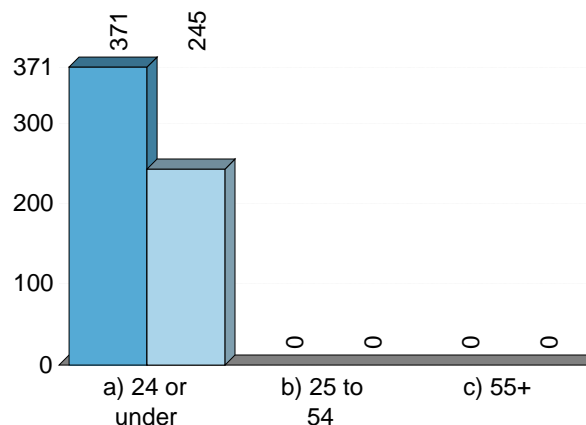
N2012 = 3,235

3. Agency Completing Survey		
[Survey Year] In "2012"		
	No.	% cit.
JAMES L MAHER CENTER	5	2.0%
TRAINING THRU PLACEMENT INC	5	2.0%
WORK OPPORTUNITIES UNLIMITED	5	2.0%
GATEWAYS TO CHANGE	3	1.2%
AVATAR	3	1.2%
ARC of BLACKSTONE VALLEY	3	1.2%
WEST BAY RESIDENTIAL SERVICES	3	1.2%
ADELINE LAPLANTE MEMORIAL CENTER	3	1.2%
COVE CENTER GRODEN CENTER	3	1.2%
COVENTRY TOWN OF PROJECT FRIENDS	3	1.2%
JUSTICE RESOURCE INSTITUTE	2	0.8%
FRANK OLEAN CENTER	2	0.8%
CORLISS INSTITUTE INC	1	0.4%
RI MENTOR SHARED LIVING	1	0.4%
LIFESHARE MANAGEMENT GROUP	1	0.4%
LIVING INNOVATIONS	1	0.4%
OPPORTUNITIES UNLIMITED	1	0.4%

3. Agency Completing Survey		
[Survey Year] = "2012"		
	No.	% cit.
RESOURCES FOR HUMAN DEVELOPMENT	33	13.5%
PERSPECTIVES CORPORATION	25	10.2%
BLACKSTONE VALLEY YOUTH and FAMILY	19	7.8%
LOOKING UPWARDS	16	6.5%
ACTION BASED ENTERPRISES INC	15	6.1%
J ARTHUR TRUDEAU MEMORIAL CTR	13	5.3%
RE FOCUS INC	12	4.9%
FOGARTY CENTER	11	4.5%
CRANSTON ARC	10	4.1%
SEVENHILLS RI	10	4.1%
SELF DIRECTED/FISCAL INTERMEDIARY	9	3.7%
SPURWINK RI	8	3.3%
COMMUNITY LIVING OF RI	7	2.9%
BRIDGES INC	6	2.4%
LIVING IN FULFILLING ENVIRONMENT	6	2.4%

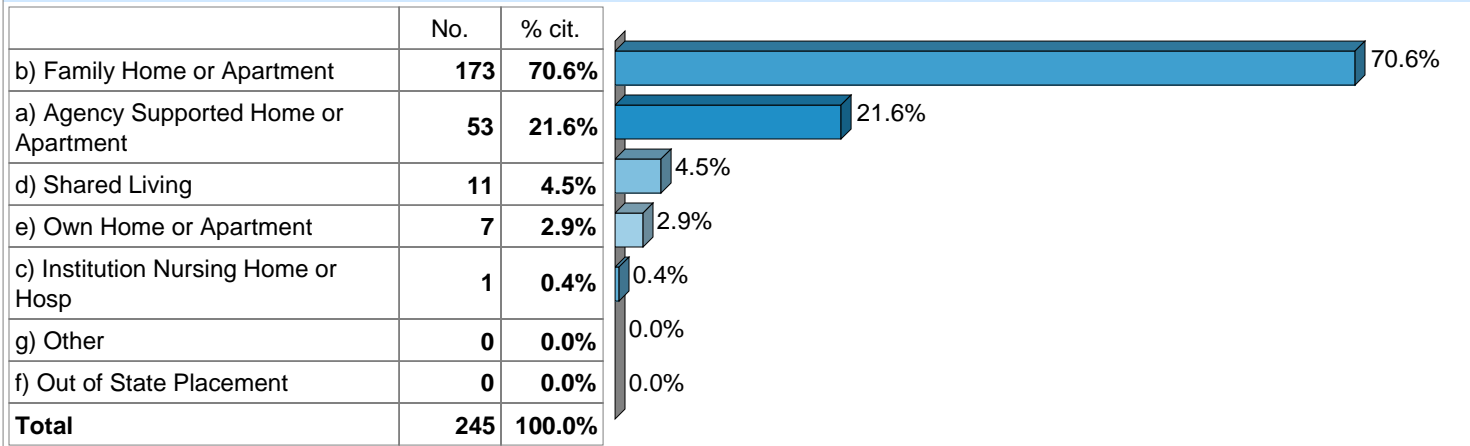
6. Consumer's Age

	2011	2012
a) 24 or under	371	245
b) 25 to 54	0	0
c) 55+	0	0



7. Consumer's Living Arrangement

[Survey Year] In "2012"



7a. Consumer's Residential Provider

[Survey Year] In "2012"

	No.	% cit.
BLACKSTONE VALLEY YOUTH and FAMILY	14	28.0%
PERSPECTIVES CORPORATION	6	12.0%
WEST BAY RESIDENTIAL SERVICES	4	8.0%
BRIDGES INC	4	8.0%
SEVENHILLS RI	3	6.0%
CRANSTON ARC	3	6.0%

7a. Consumer's Residential Provider

[Survey Year] In "2012"

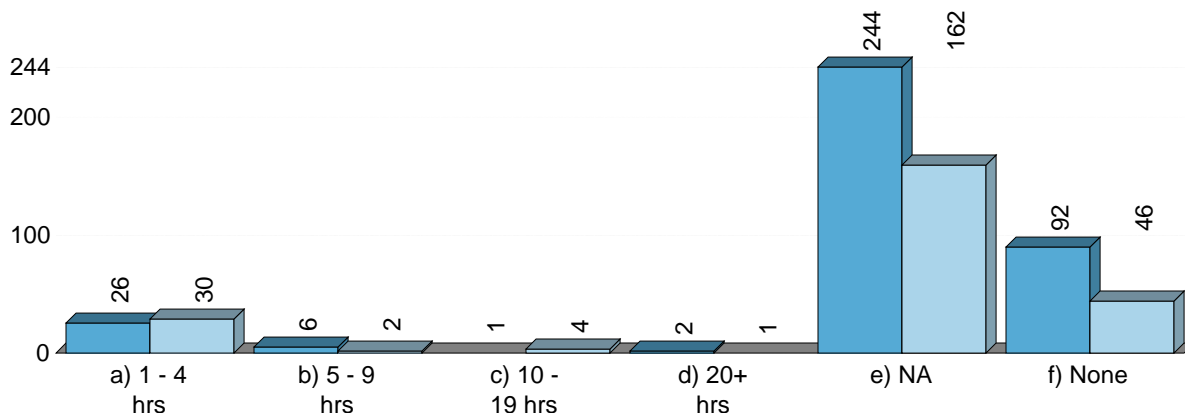
	No.	% cit.
J ARTHUR TRUDEAU MEMORIAL CTR	2	4.0%
JUSTICE RESOURCE INSTITUTE	2	4.0%
LIVING IN FULFILLING ENVIRONMENT	2	4.0%
AVATAR	2	4.0%
COMMUNITY LIVING OF RI	2	4.0%
GATEWAYS TO CHANGE	2	4.0%
RE FOCUS INC	1	2.0%
SPURWINK RI	1	2.0%
LOOKING UPWARDS	1	2.0%
OPPORTUNITIES UNLIMITED	1	2.0%

9. Consumer's Employment/Day Provider		
[Survey Year] In "2012"		
	No.	% obs.
RESOURCES FOR HUMAN DEVELOPMENT	33	13.5%
PERSPECTIVES CORPORATION	25	10.2%
LOOKING UPWARDS	16	6.5%
J ARTHUR TRUDEAU MEMORIAL CTR	15	6.1%
BLACKSTONE VALLEY YOUTH and FAMILY	15	6.1%
RE FOCUS INC	12	4.9%
ACTION BASED ENTERPRISES INC	12	4.9%
SEVENHILLS RI	11	4.5%
FOGARTY CENTER	11	4.5%
CRANSTON ARC	10	4.1%
SELF DIRECTED/FISCAL INTERMEDIARY	8	3.3%
SPURWINK RI	8	3.3%
Not Applicable	8	3.3%
COMMUNITY LIVING OF RI	7	2.9%
BRIDGES INC	6	2.4%
JAMES L MAHER CENTER	6	2.4%
LIVING IN FULFILLING ENVIRONMENT	6	2.4%

9. Consumer's Employment/Day Provider		
[Survey Year] In "2012"		
	No.	% obs.
WORK OPPORTUNITIES UNLIMITED	5	2.0%
TRAINING THRU PLACEMENT INC	5	2.0%
WEST BAY RESIDENTIAL SERVICES	4	1.6%
ARC of BLACKSTONE VALLEY	4	1.6%
GATEWAYS TO CHANGE	3	1.2%
COVENTRY TOWN OF PROJECT FRIENDS	3	1.2%
ADELINE LAPLANTE MEMORIAL CENTER	3	1.2%
AVATAR	3	1.2%
COVE CENTER GRODEN CENTER	3	1.2%
OCEAN STATE COMMUNITY RESOURCE	2	0.8%
FRANK OLEAN CENTER	2	0.8%
JUSTICE RESOURCE INSTITUTE	2	0.8%
CORLISS INSTITUTE INC	1	0.4%
OPPORTUNITIES UNLIMITED	1	0.4%

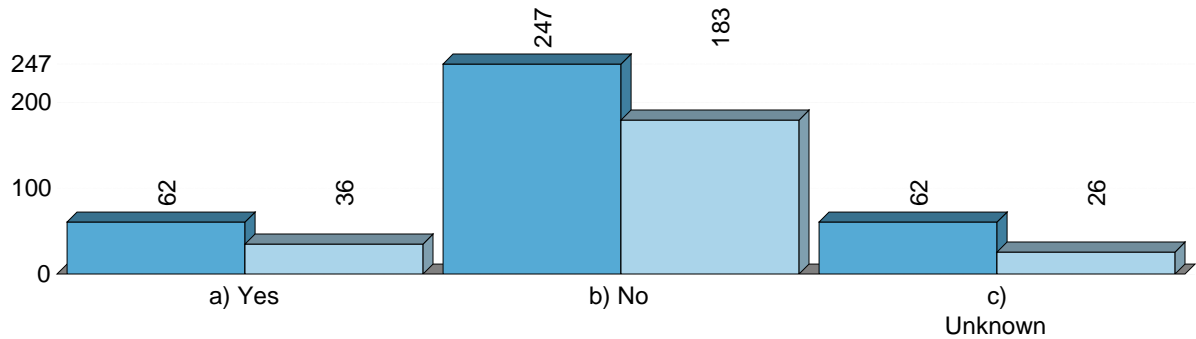
10. How many hours did you spend doing job search activities?

	2011	2012
a) 1 - 4 hrs	26	30
b) 5 - 9 hrs	6	2
c) 10 - 19 hrs	1	4
d) 20+ hrs	2	1
e) NA	244	162
f) None (In job search, but didn't look)	92	46



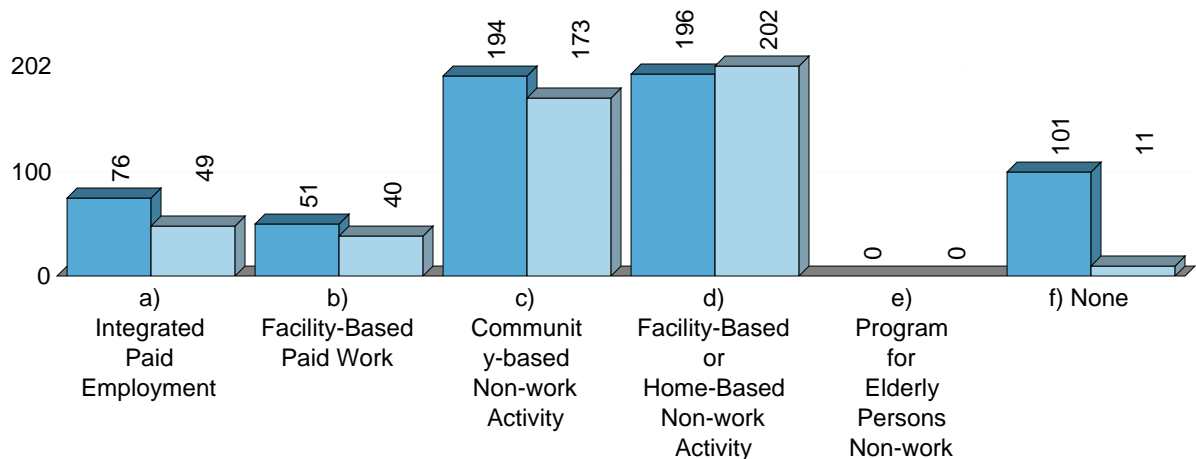
11. Within the past 12 months, did you have an OPEN case with, or apply for services from, ORS?

	2011	2012
a) Yes	62	36
b) No	247	183
c) Unknown	62	26



12. Employment and Day Activity Category

	2011	2012
a) Integrated Paid Employment	76	49
b) Facility-Based Paid Work	51	40
c) Community-based Non-work Activity	194	173
d) Facility-Based or Home-Based Non-work Activity	196	202
e) Program for Elderly Persons Non-work	0	0
f) None	101	11

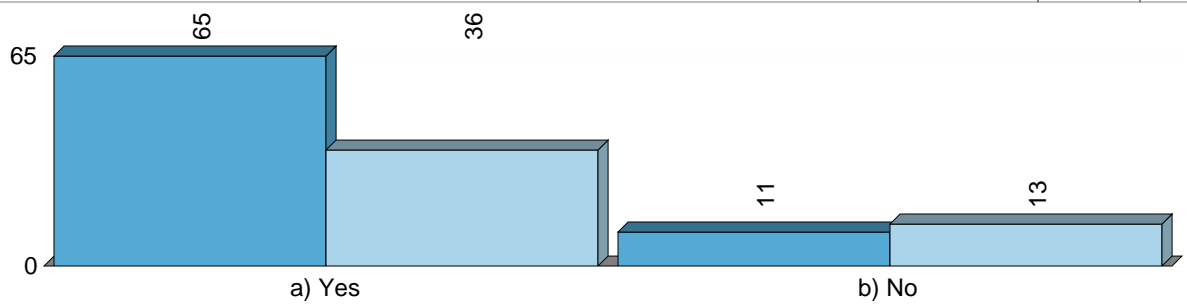


13a. From April 29 to May 26, how many different integrated jobs did you work?

	2011	2012
1	63	43
2	10	5
3	2	1
4	1	0
Total	76	49

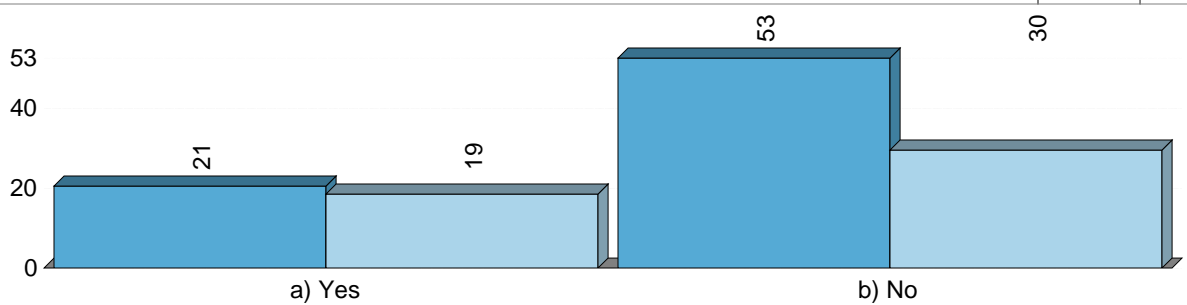
13b. Did you work at a paid integrated job for 10 of the last 12 months?

	2011	2012
a) Yes	65	36
b) No	11	13



13c. Did you begin a new integrated job during the past year?

	2011	2012
a) Yes	21	19
b) No	53	30

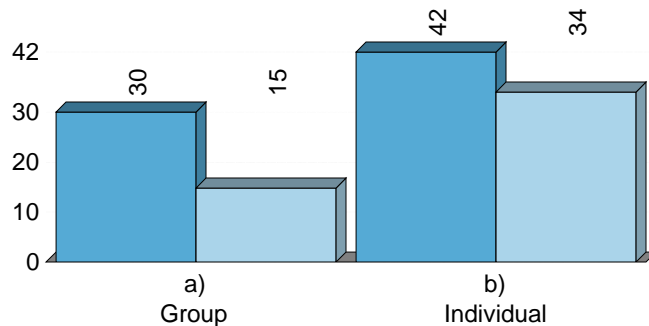


13d. Job Title		
[Survey Year] In "2012"		
	No.	% cit.
Janitors Cleaners Housekeeping	12	24.5%
Stock Clerks Sales Floor Stockroom	5	10.2%
Food Preparation and or Serving Workers Including Fast Food	4	8.2%
Dishwasher	4	8.2%
Refuse and recyclable material collectors	3	6.1%
Office and Administrative Support All types	2	4.1%
Dining Room and Cafeteria Attendants	2	4.1%
Laborers freight stock and material movers	2	4.1%
Maintenance and Repair Workers	2	4.1%

13d. Job Title		
[Survey Year] In "2012"		
	No.	% cit.
Library Assistant Clerical	1	2.0%
Laundry and or Dry Cleaning Worker	1	2.0%
Landscaping and Grounds keeping Workers	1	2.0%
Production Packagers Hand assembly	1	2.0%
Personal Care Attendant	1	2.0%
Order filler wholesale retail	1	2.0%
Greeter All types	1	2.0%
Bus Monitor Aide	1	2.0%
Bagger and or Carriage Retrieval	1	2.0%
Amusement and Recreation Attendant	1	2.0%
Couriers Messengers	1	2.0%
Child Care Workers	1	2.0%
Cashiers All industries	1	2.0%

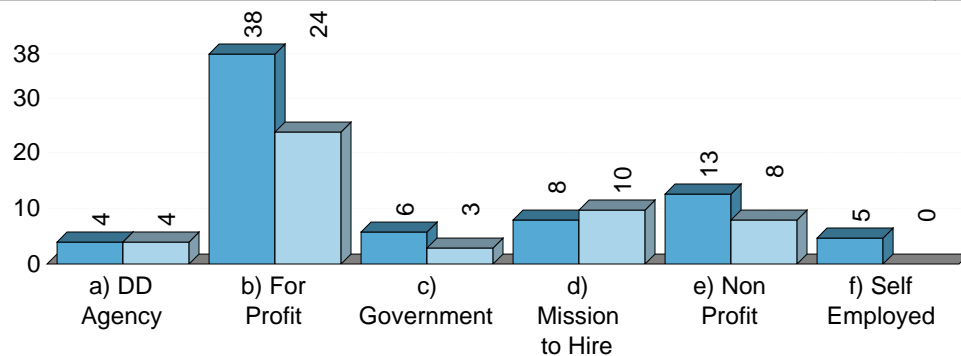
13f. For the job selected, is this an individual or group job?

	2011	2012
a) Group	30	15
b) Individual	42	34



13g. For the job title selected, indicate the type of employer.

	2011	2012
a) DD Agency	4	4
b) For Profit	38	24
c) Government	6	3
d) Mission to Hire	8	10
e) Non Profit	13	8
f) Self Employed	5	0

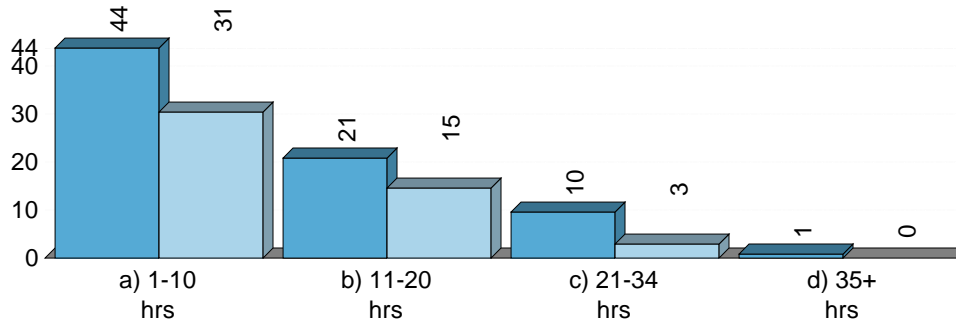


13h. For the job title selected, indicate what best represents the industry where you are employed.

	2011	2012
a) Accommodation and Food Services	17	9
b) Administrative and Support and Waste Management and Remediation Services	13	12
c) Agriculture/ Forestry/ Fishing and Hunting	2	1
d) Arts Entertainment and Recreation	4	3
e) Construction	0	0
f) Educational Services	1	2
g) Finance and Insurance	0	1
h) Information	0	1
i) Health Care and Social Assistance	3	6
j) Management of Companies and Enterprises	0	0
k) Manufacturing	3	1
l) Mining	0	0
m) Other Services Except Public Administration	16	2
n) Professional Scientific and Technical Services	0	0
o) Public Administration	2	0
p) Real Estate and Rental and Leasing	0	0
q) Retail Trade	13	7
r) Transportation and Warehousing	1	3
s) Utilities	0	1
t) Wholesale Trade	0	0

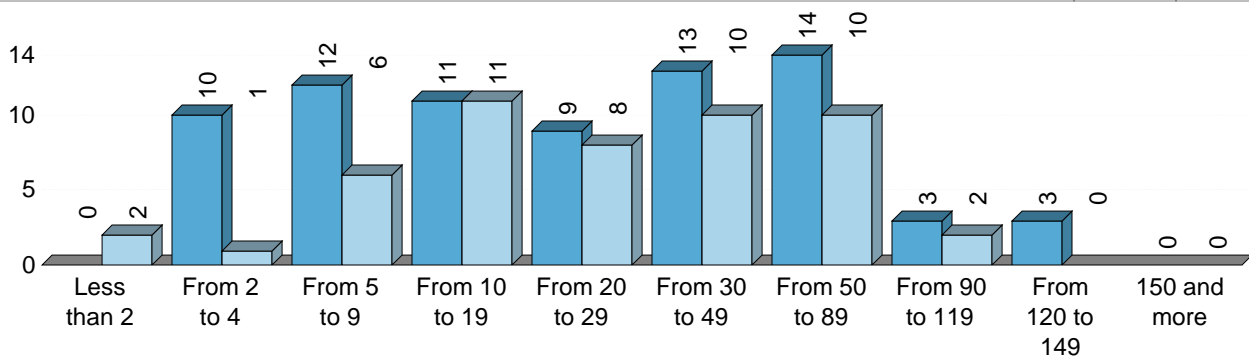
13i. For the job title selected, on average, how many hours did you work per week?

	2011	2012
a) 1-10 hrs	44	31
b) 11-20 hrs	21	15
c) 21-34 hrs	10	3
d) 35+ hrs	1	0



13j. For the job title selected, what was the total number of hours worked at this job?

	2011	2012
Less than 2	0	2
From 2 to 4	10	1
From 5 to 9	12	6
From 10 to 19	11	11
From 20 to 29	9	8
From 30 to 49	13	10
From 50 to 89	14	10
From 90 to 119	3	2
From 120 to 149	3	0
150 and more	0	0



Total Hours for Four Week Period

[Survey Year] In "2011"

Mean = 34.75
 Median = 24.00
 Min = 2 Max = 140
 Sum = 2 606

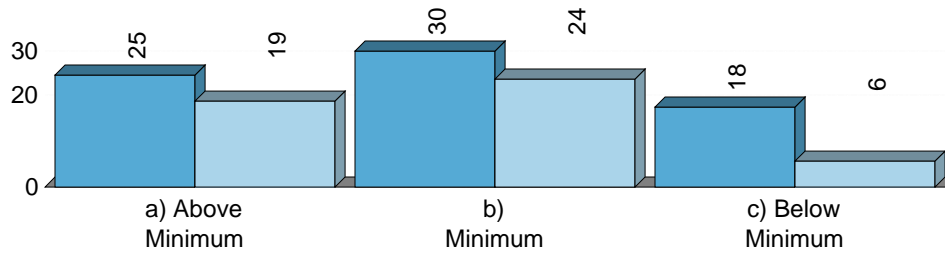
Total Hours for Four Week Period

[Survey Year] In "2012"

Mean = 33.46
 Median = 24.50
 Min = 0 Max = 100
 Sum = 1 673

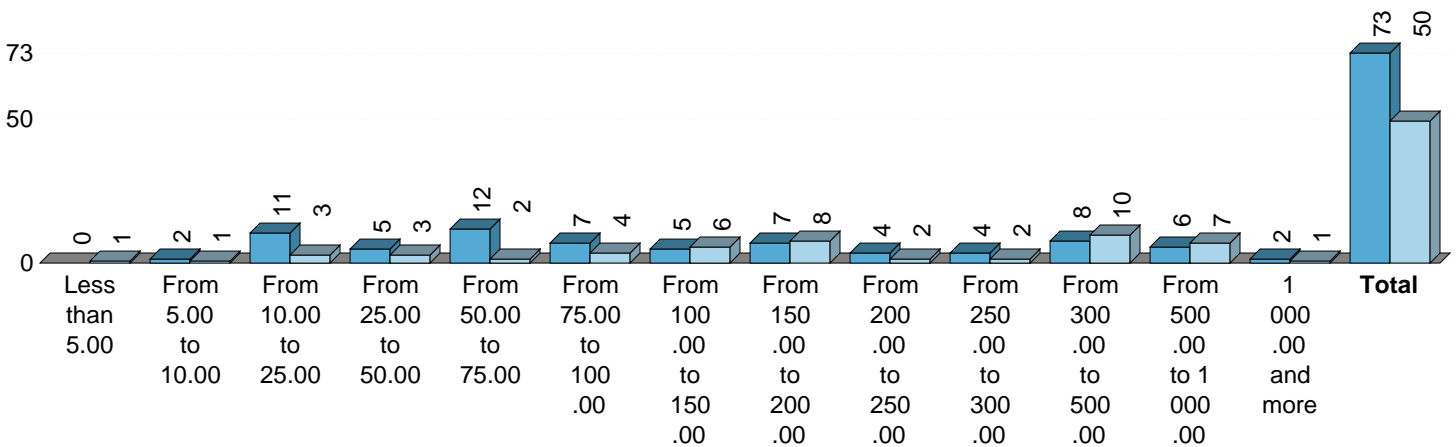
13k. For the job title selected, was your hourly wage above, at, or below minimum wage?

	2011	2012
a) Above Minimum	25	19
b) Minimum	30	24
c) Below Minimum	18	6



13l. For the job title selected, what were your total gross (pre-tax) wages at this job?

	2011	2012
Less than 5.00	0	1
From 5.00 to 10.00	2	1
From 10.00 to 25.00	11	3
From 25.00 to 50.00	5	3
From 50.00 to 75.00	12	2
From 75.00 to 100.00	7	4
From 100.00 to 150.00	5	6
From 150.00 to 200.00	7	8
From 200.00 to 250.00	4	2
From 250.00 to 300.00	4	2
From 300.00 to 500.00	8	10
From 500.00 to 1 000.00	6	7
1 000.00 and more	2	1
Total	73	50



Gross Wages for Four Week Period

[Survey Year] In "2011"

Mean = 215.75
 Median = 96.00
 Min = 9.00 Max = 1 070.00
 Sum = 15 749.99

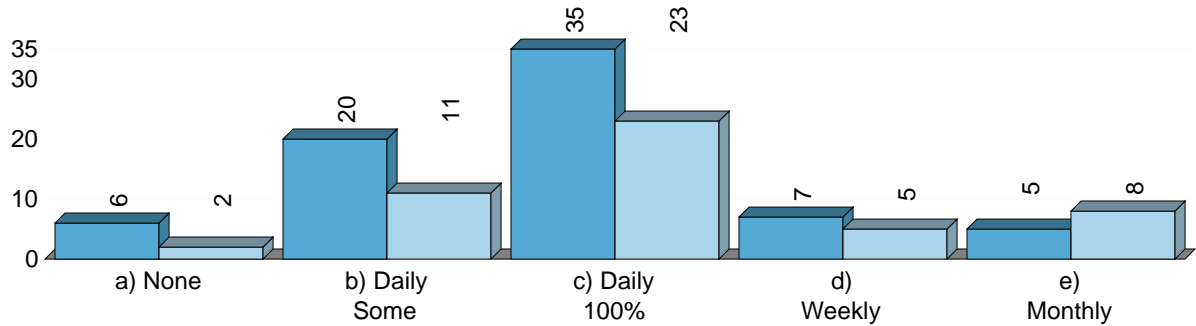
Gross Wages for Four Week Period

[Survey Year] In "2012"

Mean = 278.66
 Median = 178.50
 Min = 0.00 Max = 1 000.00
 Sum = 13 933.00

13m. For the job title selected, what was the frequency of ONSITE support you received to help you learn and/or keep this job?

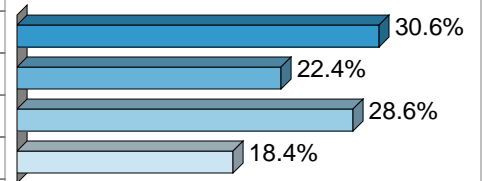
	2011	2012
a) None	6	2
b) Daily Some	20	11
c) Daily 100%	35	23
d) Weekly	7	5
e) Monthly	5	8



13m. For the job selected, what was the frequency of agency staff OFFSITE support you received to help you learn and/or keep this job?

[Survey Year] In "2012"

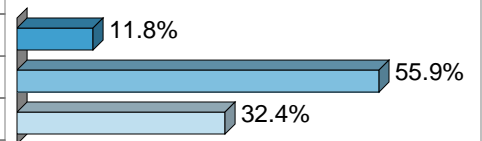
	No.	% cit.
a) None	15	30.6%
b) Daily	11	22.4%
c) Weekly	14	28.6%
d) Monthly	9	18.4%
Total	49	100.0%



13m. For the job selected, what was the type of EMPLOYER CONSULTATION provided by agency staff which you received to help you learn and/or keep this job?

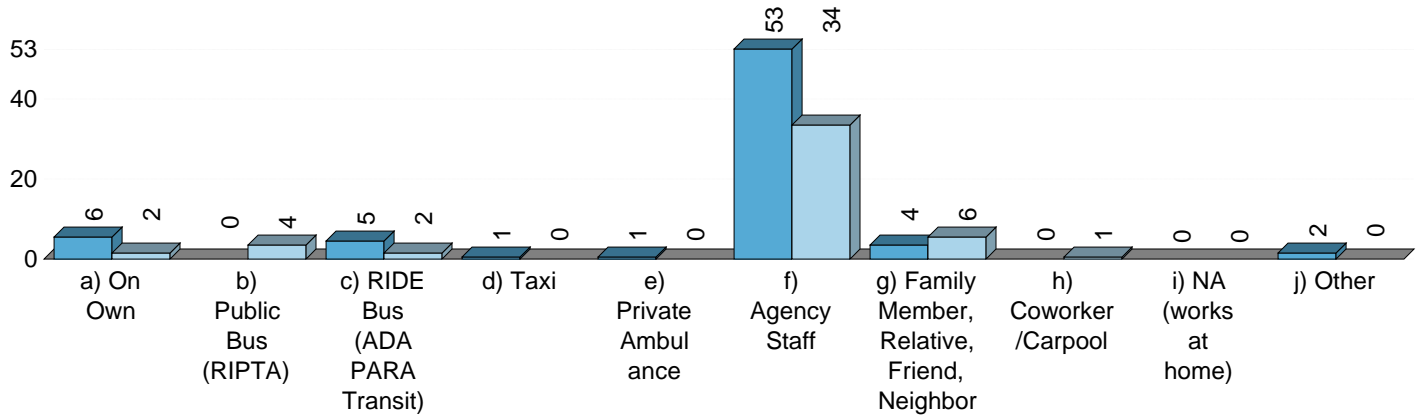
[Survey Year] In "2012"

	No.	% cit.
a) None	8	11.8%
b) Face to Face	38	55.9%
c) Phone or E-mail	22	32.4%
Total	68	100.0%



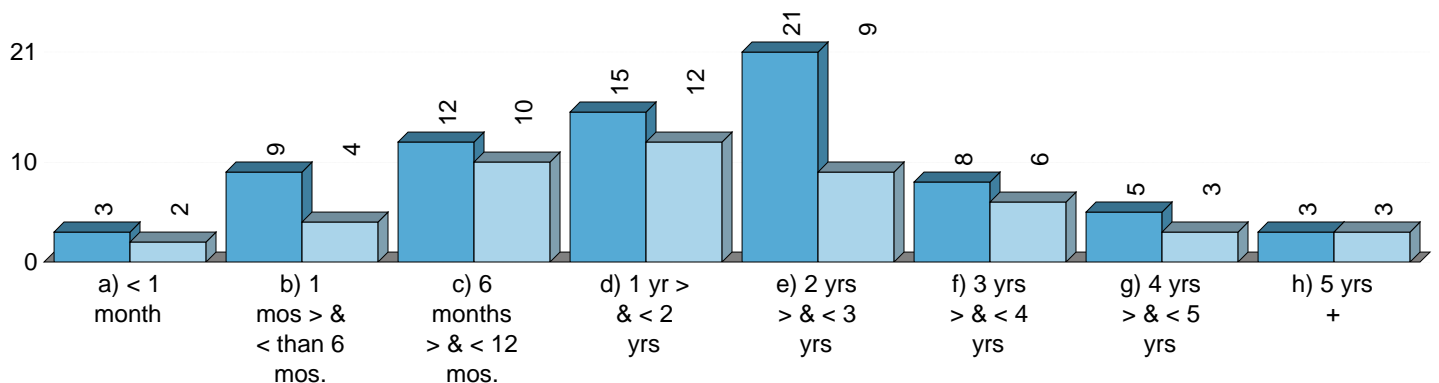
13n. For the job title selected, how did you get to this job most of the time?

	2011	2012
a) On Own	6	2
b) Public Bus (RIPTA)	0	4
c) RIDE Bus (ADA PARA Transit)	5	2
d) Taxi	1	0
e) Private Ambulance	1	0
f) Agency Staff	53	34
g) Family Member, Relative, Friend, Neighbor	4	6
h) Coworker/Carpool	0	1
i) NA (works at home)	0	0
j) Other	2	0



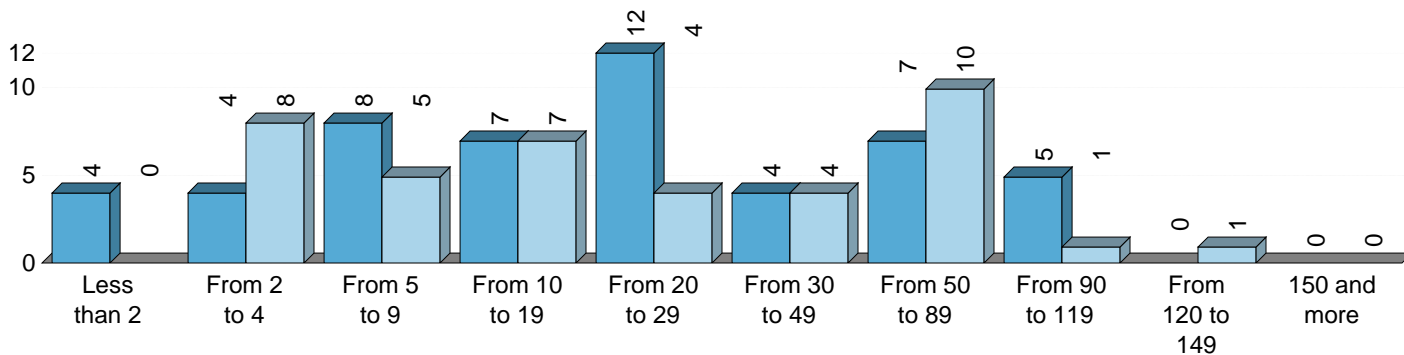
13o. For the job title selected, how long have you worked there?

	2011	2012
a) < 1 month	3	2
b) 1 mos > & < than 6 mos.	9	4
c) 6 months > & < 12 mos.	12	10
d) 1 yr > & < 2 yrs	15	12
e) 2 yrs > & < 3 yrs	21	9
f) 3 yrs > & < 4 yrs	8	6
g) 4 yrs > & < 5 yrs	5	3
h) 5 yrs +	3	3



14a. From April 29 to May 26, what were the total hours worked at your facility-based job?

	2011	2012
Less than 2	4	0
From 2 to 4	4	8
From 5 to 9	8	5
From 10 to 19	7	7
From 20 to 29	12	4
From 30 to 49	4	4
From 50 to 89	7	10
From 90 to 119	5	1
From 120 to 149	0	1
150 and more	0	0



Facility Based Total Hours

[Survey Year] In "2011"

Mean = 31.31
 Median = 22.00
 Min = 1 Max = 114
 Sum = 1 597

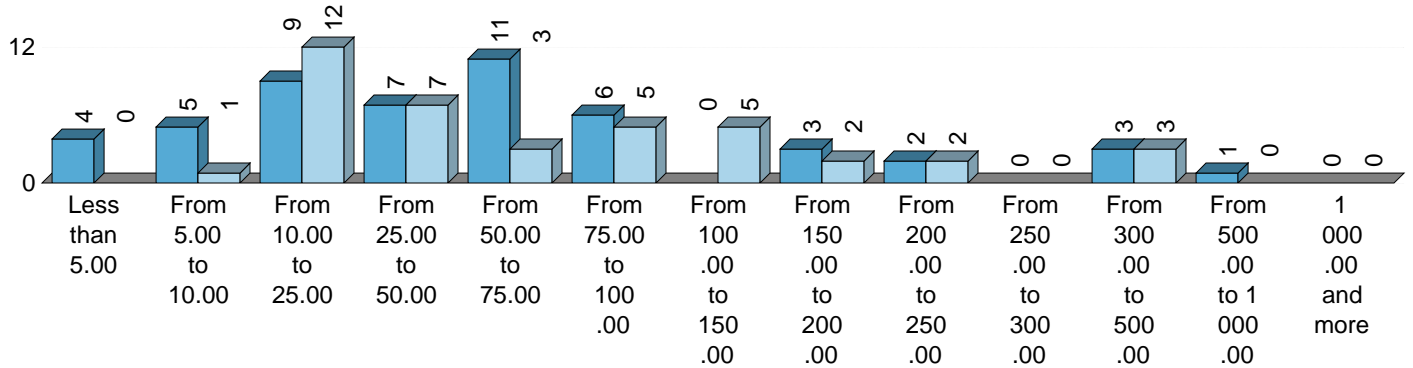
Facility Based Total Hours

[Survey Year] In "2012"

Mean = 32.35
 Median = 20.00
 Min = 2 Max = 120
 Sum = 1 294

14b. From April 29 to May 26, what were your total gross wages at your facility-based job?

	2011	2012
Less than 5.00	4	0
From 5.00 to 10.00	5	1
From 10.00 to 25.00	9	12
From 25.00 to 50.00	7	7
From 50.00 to 75.00	11	3
From 75.00 to 100.00	6	5
From 100.00 to 150.00	0	5
From 150.00 to 200.00	3	2
From 200.00 to 250.00	2	2
From 250.00 to 300.00	0	0
From 300.00 to 500.00	3	3
From 500.00 to 1 000.00	1	0
1 000.00 and more	0	0



Facility Based Gross Wages

[Survey Year] In "2011"

Mean = 86.11
 Median = 50.00
 Min = 2.00 Max = 740.00
 Sum = 4 391.65

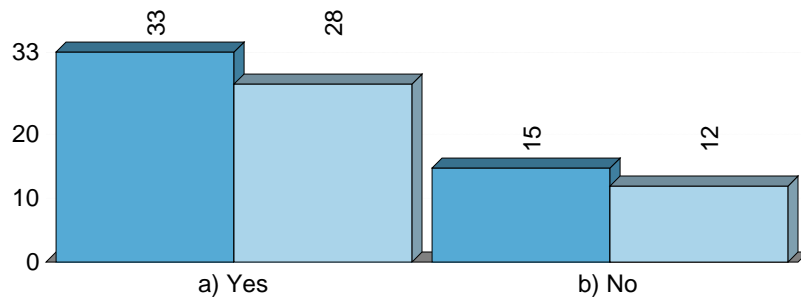
Facility Based Gross Wages

[Survey Year] In "2012"

Mean = 95.78
 Median = 49.50
 Min = 5.00 Max = 488.00
 Sum = 3 831.00

14c. Did you work in FACILITY-BASED WORK for 10 of the last 12 months?

	2011	2012
a) Yes	33	28
b) No	15	12



14d. How LONG have you worked at the agency at which you are doing FACILITY-BASED PAID WORK?

[Survey Year] In "2012"

	No.	% cit.	
a) less than 6 months	6	15.0%	15.0%
b) 6 months or more & less than 12 months	7	17.5%	17.5%
c) 1 yr or more & less than 3 yrs	23	57.5%	57.5%
d) 3 yrs or more & less than 5 yrs	4	10.0%	10.0%
e) 5 yrs or more & less than 10 yrs	0	0.0%	0.0%
f) 10 yrs or more & less than 15 yrs	0	0.0%	0.0%
g) 15 yrs or more	0	0.0%	0.0%
Total	40	100.0%	

15. From April 29 to May 26, how many HOURS did you spend doing COMMUNITY-BASED, NON-WORK ACTIVITIES?

	2011	2012
Less than 2	0	4
From 2 to 4	20	19
From 5 to 9	18	25
From 10 to 19	35	21
From 20 to 29	30	22
From 30 to 49	40	44
From 50 to 89	29	30
From 90 to 119	11	3
From 120 to 149	9	6
150 and more	0	0
Total	192	174

Community Based Non-work Hours

[Survey Year] In "2011"

Mean = 36.25
 Median = 24.50
 Min = 2 Max = 133
 Sum = 6 960

Community Based Non-work Hours

[Survey Year] In "2012"

Mean = 33.35
 Median = 25.50
 Min = 0 Max = 120
 Sum = 5 803

16. From April 29 to May 26, how many HOURS did you spend doing FACILITY-BASED and/or HOME-BASED NON-WORK ACTIVITIES?

	2011	2012
Less than 2	4	2
From 2 to 4	2	1
From 5 to 9	5	3
From 10 to 19	13	9
From 20 to 29	19	13
From 30 to 49	21	16
From 50 to 89	66	67
From 90 to 119	47	52
From 120 to 149	16	37
150 and more	3	2
Total	196	202

Facility Based Non-work Hours
[Survey Year] In "2011"
Mean = 68.48 Median = 65.00 Min = 0 Max = 153 Sum = 13 422

Facility Based Non-work Hours
[Survey Year] In "2012"
Mean = 79.83 Median = 86.00 Min = 0 Max = 180 Sum = 16 125