

2011
RI STATEWIDE
DD EMPLOYMENT AND DAY ACTIVITY
OUTCOME SURVEY

BRIEF

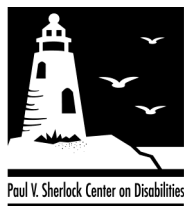
AUTHORED BY:



**PAUL V. SHERLOCK
CENTER ON DISABILITIES**

Promoting Membership in School, Work and Community





ACKNOWLEDGEMENTS

Many individuals contributed to the development of the survey and the survey data collection, which resulted in this Brief. The authors of this report would like to acknowledge the following:

BHDDH Employment Action Team - Tom Martin, **BHDDH**, Mary Madden, **Trudeau Center** and Vicki Ferrara **Sherlock Center on Disabilities**; *Quality Outcome Measures Survey Liaison*, Lisa Rafferty, **Bridges Inc.** and Mary Anne Pallack, Sherlock Center on Disabilities; and attendees of the *DD Supported Employment Council*. Special thanks to Kim Einloth and Amy Vine, **Perspectives Corporation** for their detailed feedback on the written and on-line version of the surveys.

We would also like to thank the **DD Agency Directors** for their support of the **Agency Liaisons** that facilitated the survey within each organization. It is because of you we reached a 98% participation rate.

Lastly we would like to thank Craig Stenning, Administrator of BHDDH, for his support and collaboration that made this survey possible.

AUTHORS

The survey was facilitated and the report was authored by the Paul V. Sherlock Center on Disabilities at Rhode Island College with contributions from:

- Anthony Antosh, Ph.D., Director;
- Mary Anne Pallack, Associate Director;
- Vicki Ferrara, Employment Coordinator; and
- Roger Eldridge Jr., Ph.D., Professor RI , RI College.

With appreciation to Bernice Panicci, Data Management Specialist, for administrative support.

Documents related to this survey are available on line at <http://www.rioutcomesurveys.info>.

2011 RI STATEWIDE DD EMPLOYMENT AND DAY ACTIVITY OUTCOME SURVEY BRIEF

INTRODUCTION

Respondents completed the first annual Developmental Disabilities (DD) Employment and Day Activity Outcome Survey for the period of May 1 to May 28, 2011. Thirty-eight out of forty possible organizations took part in completing the survey representing ninety-eight percent (98%) of the population [Appendix A]. The purpose of the survey was to obtain baseline employment information and day activity data for individuals receiving services through the Division of Developmental Disabilities/BHDDH. The report provides information on how people with developmental disabilities spend their time, whether employed (paid work) or in day activity (unpaid, non-work activity). Additionally the report provides information on where time is spent - an agency-operated facility or within an integrated community setting. The majority of this report provides information on Integrated Paid Employment.

The survey encompassed the period of May 1 to May 28, 2011. The completed surveys were submitted between June 4 and July 30, 2011. Individuals were assigned to data collectors to avoid duplication in the count. Agency liaisons and other key personnel received two hours of training about the definitions and questions, the data collection tool, and methods to enter the on-line data. Agencies submitted data for each individual. A total of 3,542 surveys were submitted which represented ninety-eight percent (98%) of the May census of 3,600 individuals registered with the Division of Developmental Disabilities.

DEMOGRAPHICS

The data represents 3,542 individuals. Six **service categories** (Table 1) were available for the respondents to select: 1) Integrated Paid Employment; 2) Facility-Based Paid Employment; 3) Facility-Based Non-Work Activity; 4) Community-Based Non-Work Activity; 5) Program for Elderly Persons Non-Work; and 6) None. From the total of 3,542 respondents, 429 individuals (14.5%) report that they do not participate in any day service or employment activity. Survey respondents were able to state participation in more than one service category. A total of 1,954 respondents report participation in two (2) or more service categories.

	No.	% obs.
Integrated Paid Employment	799	22.6%
Facility-Based Paid Work	919	25.9%
Facility-Based Non-Work Activity	2 143	60.5%
Community-Based Non-Work Activity	1 776	50.1%
Program for Elderly Persons Non-Work	203	5.7%
None (eligible but not receiving services during period)	513	14.5%
Total	3 542	

From a total of 3,542 respondents, **799 individuals (22.6%)** report that they participate in **Integrated Paid Employment**; another **919 respondents (25.9%)** state that they engage in **Facility-Based Paid Work**. Sixty-two (**62**) individuals (**7.7%**) report that they **hold multiple paid jobs** (Table 10). A total of **1,718 respondents (48.5%)** report **some form of paid work**, integrated or facility-based.

A majority of the respondents participate in some form of **non-work activity**. A total of **2,143 respondents (60.5%)** participate in **Facility-Based Non-Work activity**, while **1,776 respondents (50.1%)** report that they participate in **Community-Based Non-Work activity**. Another **203 respondents (5.7%)** are in a **Program for Elderly Persons Non-Work**.

A majority of the service recipients, 2,219 (62.7%), are in the **age** category 25-54 years old; another 371 respondents (10.5%) register as young adults, 21-24 years old; and 952 (26.9%) of the respondents report being 55 years or older (Table 2).

	No.	% cit.
24 or under	371	10.5%
25 to 54	2 219	62.6%
55+	952	26.9%
Total	3 542	100.0%

During May 2011, 2,202 individuals (62.2%) received **residential services** (Appendix B) from the thirty-eight (38) Developmental Disabilities providers. A total of 1,340 respondents (37.8%) report not having a residential provider.

A total of 3,313 respondents report receiving **employment and day services** (Appendix C) from the thirty-eight Developmental Disabilities providers, while only 429 individuals (12.1%) do not have an employment/day provider.

GENERAL INFORMATION

Job Search

During the survey period, 2,640 respondents (74.5%) report not looking for a job. Eight Hundred Forty Six (846) individuals (23.9%) describe themselves as looking for a job; but of this total, 754 individuals (89.1%) report spending no time actually engaged in looking for a job during the survey period. A total of 142 respondents report actively spending time looking for a job during May 2011. Of the 142 respondents who were actively engaged in a job search during May 2011, 108 respondents (76.1%) report looking less than four (4) hours, while five (5) individuals (3.5%) report searching for a job for twenty (20) hours or more (Table 3).

Table 3 - Job Search Hours		
	No.	% cit.
1 - 4 hrs	108	3.0%
5 - 9 hrs	27	0.8%
10 - 19 hrs	8	0.2%
20+ hrs	5	0.1%
None (Looking but not this month)	754	21.3%
NA (not looking)	2 640	74.5%
Total	3 542	100.0%

Vocational Rehabilitation Utilization - Office of Rehabilitation Services (ORS)

A total of 114 respondents (3.7%) report, that during the past 12 months, they had an open case with ORS or applied for services (Table 4).

Table 4 - ORS Client within the past 12 months		
	No.	% cit.
Yes	114	3.2%
No	3 173	89.6%
Unknown	255	7.2%
Total	3 542	100.0%

INTEGRATED PAID EMPLOYMENT

Of all the individuals completing the survey, **799 of the respondents report that they are engaged in Integrated Paid Employment**. The information that follows about Integrated Paid Employment is arranged around the survey questions. The **bold** print words indicate the type of information requested from the respondents.

Of the 799 respondents, 467 respondents (58.4% of those participating in integrated paid employment) report **working as individuals**, while 310 respondents (38.8%) are **employed as part of a group** enclave or work crew. A total of twenty-two (22) individuals (2.8%) did not respond to the question about their Integrated Paid Employment (Table 5).

	No.	% cit.
Non-response	22	2.8%
Individual	467	58.4%
Group	310	38.8%
Total	799	100.0%

Obtaining employment and longevity are important pieces of information in the survey. Six Hundred Ninety Eight (698) Integrated Paid Employment respondents (87.4%) reported that they did not obtain their job during the past year. Ninety-four (94) of the respondents (11.8%) however, did obtain a new integrated paid job during the past year (Table 6). A total of 748 respondents (93.6% of those participating in integrated paid employment) reported that they were employed in an integrated paid employment during ten (10) of the last twelve (12) months (Table 7). Only forty-seven (47) respondents (5.9%) did not work in an integrated paid employment during ten (10) of the last twelve (12) months.

	No.	% cit.
Non-response	7	0.9%
Yes	94	11.8%
No	698	87.4%
Total	799	100.0%

	No.	% cit.
Non-response	4	0.5%
Yes	748	93.6%
No	47	5.9%
Total	799	100.0%

A small number of respondents report **working more than one job** (Table 8). Seven Hundred Thirty Seven (737) respondents (92.2% of those participating in integrated paid employment) report working in one job, fifty-eight (58) individuals (7.3%) work in two jobs. Only four (4) individuals report that they work at three jobs.

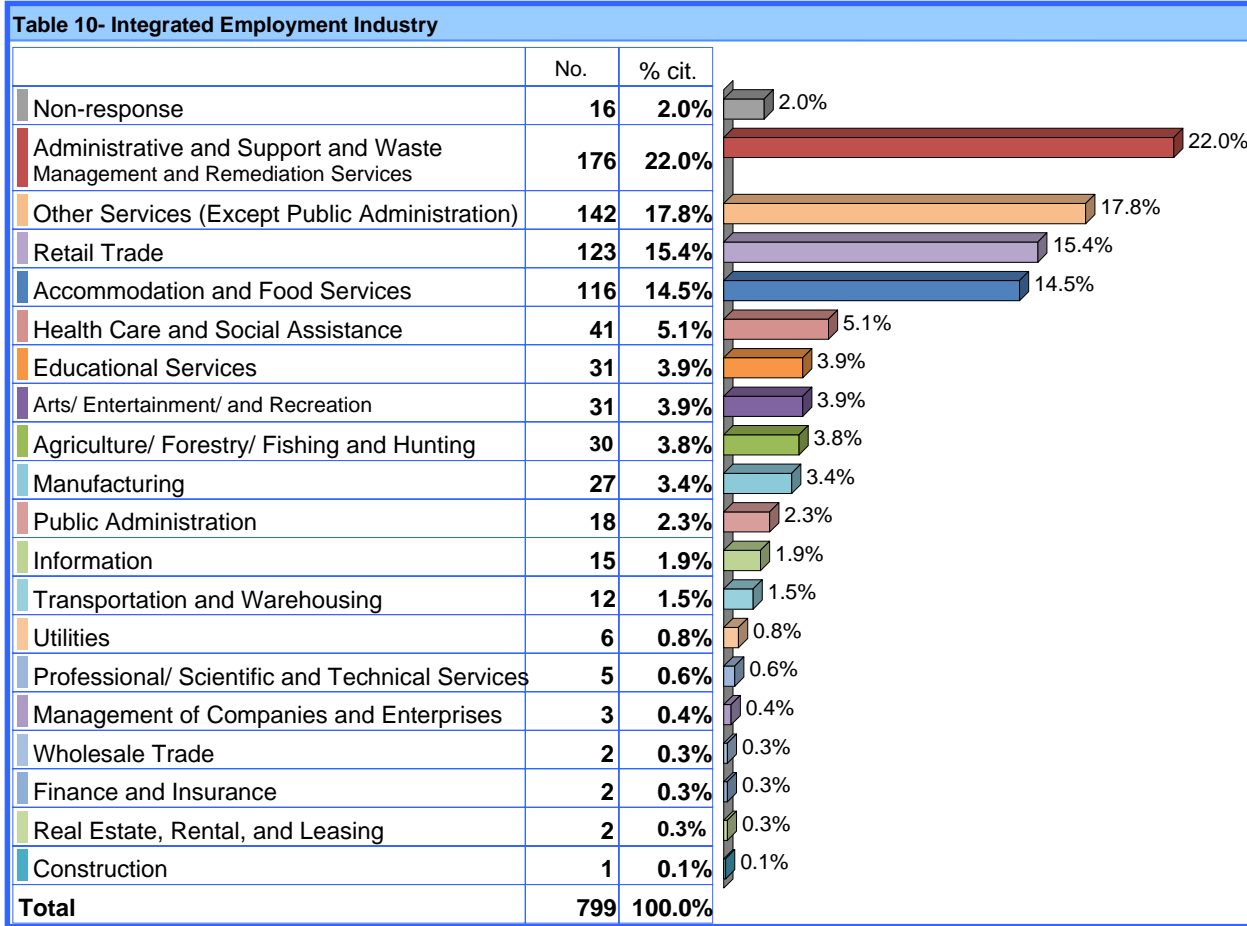
	No.	% cit.
1	737	92.2%
2	58	7.3%
3	4	0.5%
Total	799	100.0%

The respondents were provided a list of 105 **job titles** representing twenty (20) **industry categories** identified by the North American Industry Classification System (NAICS). The respondents were asked to select a job title or provide another job title to describe the job they hold. The respondents identified fifty-five (55) different job titles (Table 9). Respondents report employment in every industry except mining. The top ten job titles are: Janitors/Cleaners (23.9%, 207 respondents); Refuse and Recycling Collector (10.4%, 90); Bagger-Grocery (5.3%, 46); Landscaping/Grounds Worker (5.2%, 45) Stock clerks-Sales floor (4.6%, 40); Artist –Crafts (4.5%, 39); Animal Caretakers (3.8%, 33); Dishwasher (3.6%, 31); Delivery Person-All Types (3.0%, 26); Office and Administrative Support Workers/All Other (2.9%, 25). The ten categories represent 67.2% of the total jobs reported in the survey.

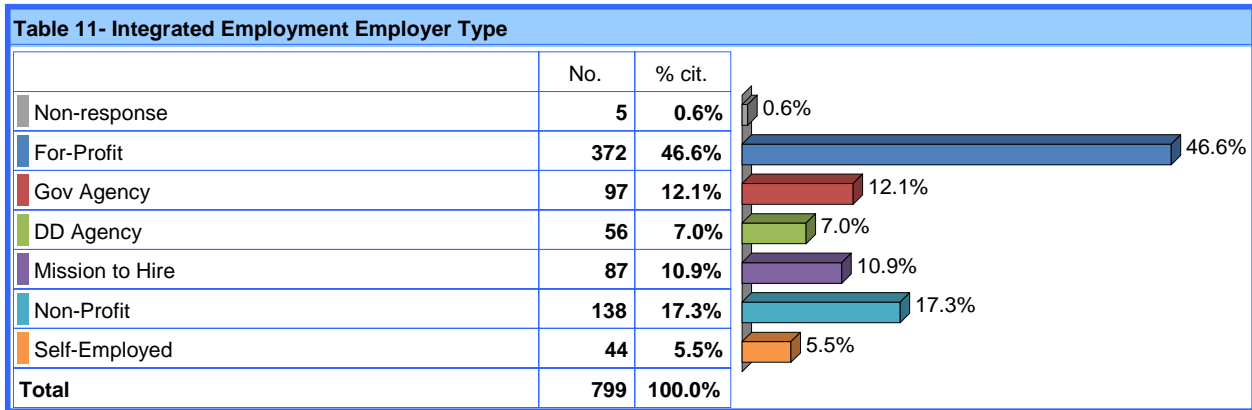
	No.	% cit.
Janitors and Cleaners	207	25.8%
Refuse/Recycle Collector	90	11.2%
Bagger - Grocery	46	5.7%
Landscaping/Grounds Wkr	45	5.6%
Stock Clerks - Sales Floor	40	5.0%
Artist - Crafts	39	4.9%
Animal Caretakers	33	4.1%
Dishwasher	31	3.9%
Delivery Person-all types	26	3.2%
Office and Administrative Support Workers/ All Other	25	3.1%
Dining Rm/Caf Attend	24	3.0%
Laundry and/or Dry Cleaning Wkr	24	3.0%
Food Preparation Workers - Non serving	22	2.7%
Production - Packagers/ Hand Assembly	20	2.5%
Food Preparation and Serving Workers	15	1.9%
Laborers and Freight/ Stock and Material Movers	12	1.5%
Carriage Retrieval	11	1.4%
Clerks - Reception/Info	11	1.4%
Sales Persons - Retail	11	1.4%
Stock Clerks - Stockrm/Warehouse/Stor	10	1.2%
Vend Mach Service & Repair	9	1.1%
Couriers and Messenger	9	1.1%
Clerks - Office	8	1.0%
Child Care Workers - Non-school	8	1.0%
OTHER	7	0.9%
Clerks - Mail	6	0.7%
Data Entry Keyers	6	0.7%
Cashiers - All Industries	6	0.7%

	No.	% cit.
Maintenance and Repair Workers	5	7.8%
Sales Worker - Door to Door	5	7.8%
Sales - Related Occupations	4	6.3%
Nursery Workers (landscape/retail)	4	6.3%
Teacher Assistants	4	6.3%
Not Provided	4	6.3%
Artist - FA/ MM/ GD	4	6.3%
Greeter-All Types	3	4.7%
Personal Care Attendant	3	4.7%
Furniture Finishing/ Assembly/ Caning	2	3.1%
Parking Lot Attendant	2	3.1%
Bus Monitor Aide	2	3.1%
Tailors/ Dressmakers/ and Custom Sewers	2	3.1%
Amusement/Rec Attendant	2	3.1%
Baggage Porter and Bellhops	2	3.1%
Counter Attendants	2	3.1%
Driver (Delivery Service)	2	3.1%
Silver Polisher	1	1.6%
Ushers/ Lobby Attendants & Ticket Takers	1	1.6%
Secretary - All Types	1	1.6%
Retail Trade	1	1.6%
Automotive Cleaners	1	1.6%
Construction Worker/Laborers	1	1.6%
Activity Aide - Rec Worker	1	1.6%
Animal Groomer	1	1.6%
Hostess	1	1.6%
Order Filler/ Wholesale Retail	1	1.6%
Cooks/Chef/Baker	1	1.6%
Greeting Card Business	1	1.6%

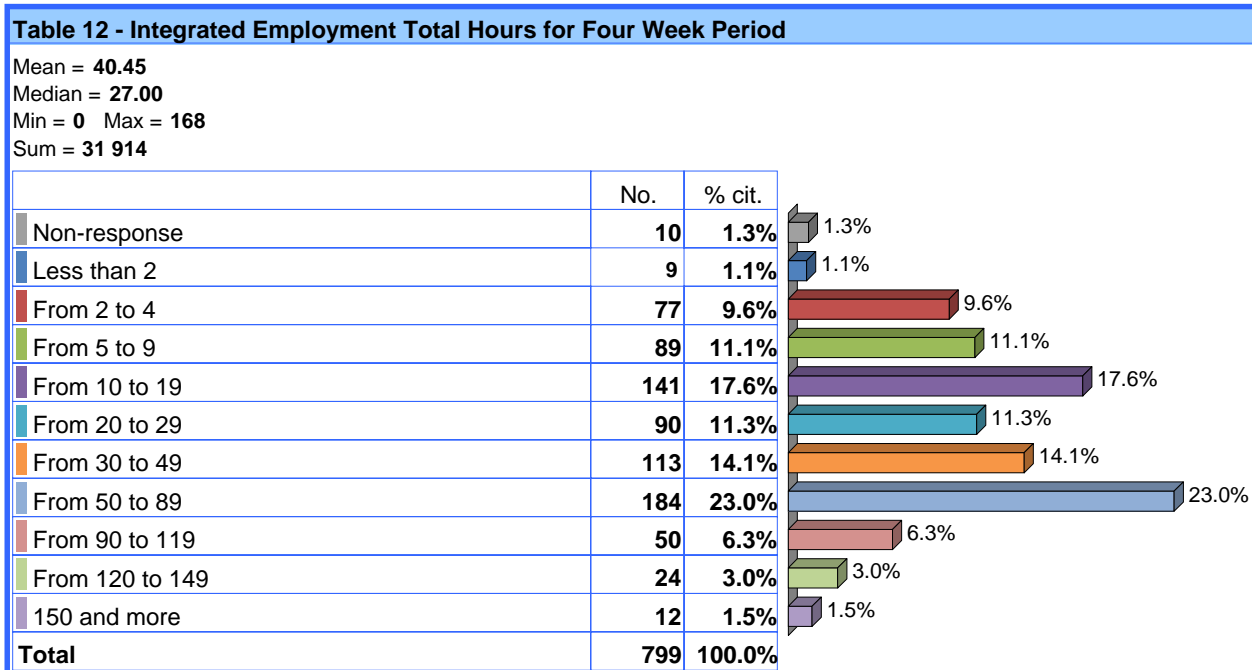
The top four North American **Industries** that hire the largest numbers of respondents are: 1) Administrative and Support and Waste Management and Remediation Services with 359 employees (41.5%); 2) Retail Trade with 140 respondents (16.2%); 3) Accommodation and Food Services with 96 respondents (11.1%); and 4) Other Services with 72 respondents (8.3%). These four industries account for 667 of the Integrated Paid Employment respondents (77.1%) who report that they hold a job (Table 10).



Respondents work for different **categories of employers** (Table 11). For-profit employers employ 372 of the respondents (46.6% of those participating in integrated paid employment), and non-profit organizations employ 138 respondents (17.3%). In addition, ninety-seven (97) respondents (12.1%) are employed by government agencies. Another eighty-seven (87) respondents (10.9%) hold jobs with an organization that has a mission to employ individuals with developmental disabilities. Developmental disability agencies employ fifty-six (56) respondents (7.0%). Only forty-four (44) respondents (5.5%) report that they are self-employed.



The **working hours** data (Table 12) of the respondents are interesting. Seven Hundred Eighty Nine (789) respondents report involvement in Integrated Paid Employment for a total of 31,914 hours during May 2011. The average number of work hours reported for each respondent was 39.9 hours during the four-week period. On average, each respondent worked slightly less than ten (10) hours each week. The median number of work hours reported during the four weeks is 27.0 hours. Only thirty-six (36) respondents (4.5% of those participating in integrated paid employment) report a total of 120 or more hours of work during the four weeks. These thirty-six respondents spent an average of 30 hours or more working per week. Another 347 respondents (43.4%) worked between 7.5 and 29.75 hours during each of the four weeks. Finally, 406 respondents (50.7%) worked seven (7) or fewer hours during each of the four weeks. The maximum number of hours worked by any respondent was 168 hours or forty-two (42) hours per week.



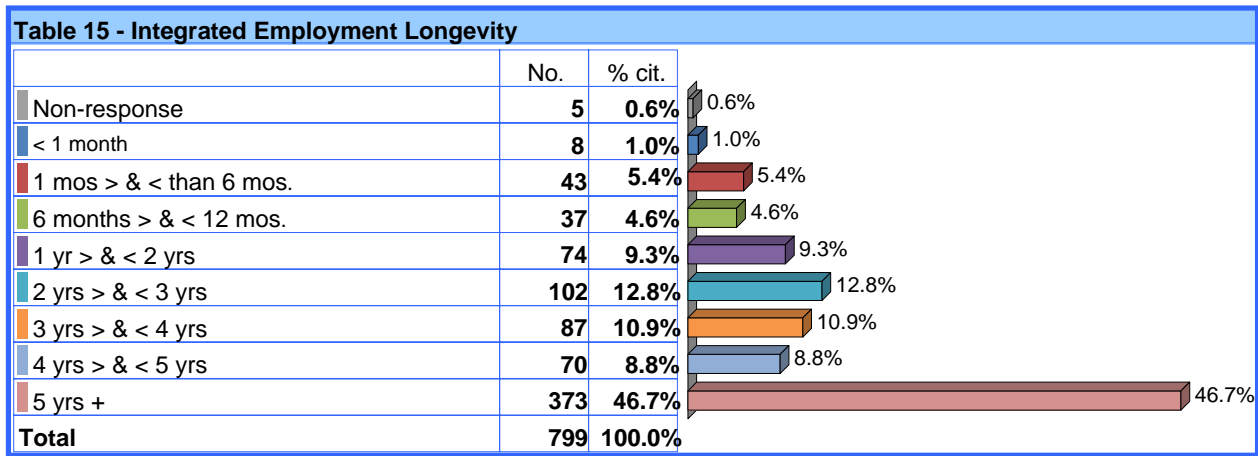
The **wages earned** (Table 13) provide more information about the respondents. A total of 787 respondents provided information about the wages earned in May 2011. Three Hundred Eleven (311) respondents (39.5% of those participating in integrated paid employment), report hourly wages above the Rhode Island minimum wage of \$7.40; Another 268 respondents (34.1%) report earning the minimum hourly wage. A total of 200 respondents (25.4%) report earning an hourly wage below the official minimum wage.

	No.	% cit.
Non-response	20	2.5%
Above minimum	311	38.9%
Minimum	268	33.5%
Below minimum	200	25.0%
Total	799	100.0%

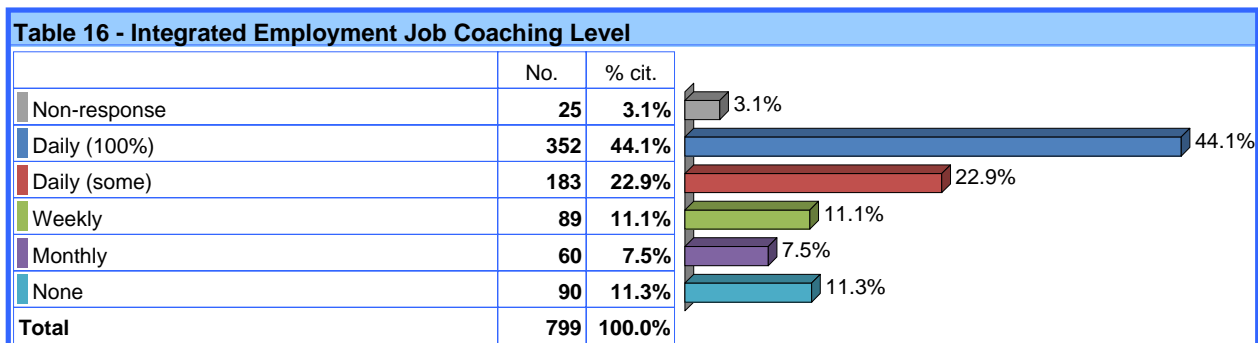
The respondents reporting information about their **gross wages** (Table 14) report earning a total of \$228,366 during the four weeks in May 2011. The average wage reported for the 4-week period was \$290 or approximately \$72 per week. The median wage earned was \$135 for the four weeks or approximately \$33.75 per week. The maximum wage reported was \$2,800, and the lowest wage for the four-week period was \$2.00. For the period May 1, 2001 to May 28, 2011, twenty-nine (29) respondents (3.7% of those participating in integrated paid employment) report earning wages greater than \$1,000. Another 296 respondents (37.6%) report wages greater than \$200 but less than \$999. In addition, 259 respondents (32.9%) report earning wages less than \$200 but greater than \$50. Finally, 203 of the respondents (25.8%) report earning less than \$49 over the four weeks.

	No.	% cit.
Non-response	12	1.5%
Less than 5.00	5	0.6%
From 5.00 to 10.00	16	2.0%
From 10.00 to 25.00	82	10.3%
From 25.00 to 50.00	100	12.5%
From 50.00 to 75.00	71	8.9%
From 75.00 to 100.00	56	7.0%
From 100.00 to 150.00	87	10.9%
From 150.00 to 200.00	45	5.6%
From 200.00 to 250.00	44	5.5%
From 250.00 to 300.00	24	3.0%
From 300.00 to 500.00	93	11.6%
From 500.00 to 1 000.00	135	16.9%
1 000.00 and more	29	3.6%
Total	799	100.0%

The respondents who participated in Integrated Paid Employment also provided information about their **employment longevity** (Table 15). A total of 373 respondents (46.7%) report that they had been employed for five or more years. Another 333 respondents (41.8%) were employed between one and five years. Only eight-eight (88) respondents (11.0%) report being employed for less than one year.



Survey respondents were asked to identify the frequency of **on-site support or job coaching** (Table 16) received from agency support staff to assist in learning or keeping a job. A total of 352 respondents (44.1% of those participating in integrated paid employment) report receiving job coaching on a daily basis 100% of the time. Another 183 respondents (22.9%) report receiving job coaching daily some of the time. In addition, eighty-nine (89) respondents (11.1%) received weekly job coaching, while sixty (60) of the respondents (7.5%) received job coaching on a monthly basis. Only ninety (90) respondents (11.3%) report receiving no support while on the job.



Another piece of information requested from the survey respondents was how they **travel to work** (Table 17). A large majority (581) of the respondents (72.7% of those participating in integrated paid employment) report that an agency staff member transports them to their work sites; another fifty-seven (57) respondents (7.1%) report taking RIPTA PARA Transit to work. A total of 41 respondents (5.1%) transport themselves to work. Thirty-five (35) of the respondents (4.4%) travel by public bus. A family member or friend takes thirty-one (31) of the respondents (3.9%) to work. Nine (9) individuals (0.1%) report a private ambulance transports them to work, and only one (1) individual reports receiving transportation to work by a co-worker.

Table 17 - Integrated employment Transportation to Work

	No.	% cit.
Non-response	34	4.3%
ADA Bus	57	7.1%
Agency/Staff	581	72.7%
Co-worker/Carpool	1	0.1%
Family Member	31	3.9%
On Own	41	5.1%
Other	4	0.5%
Private Ambulance	9	1.1%
Public Bus	35	4.4%
Taxi	6	0.8%
Total	799	100.0%

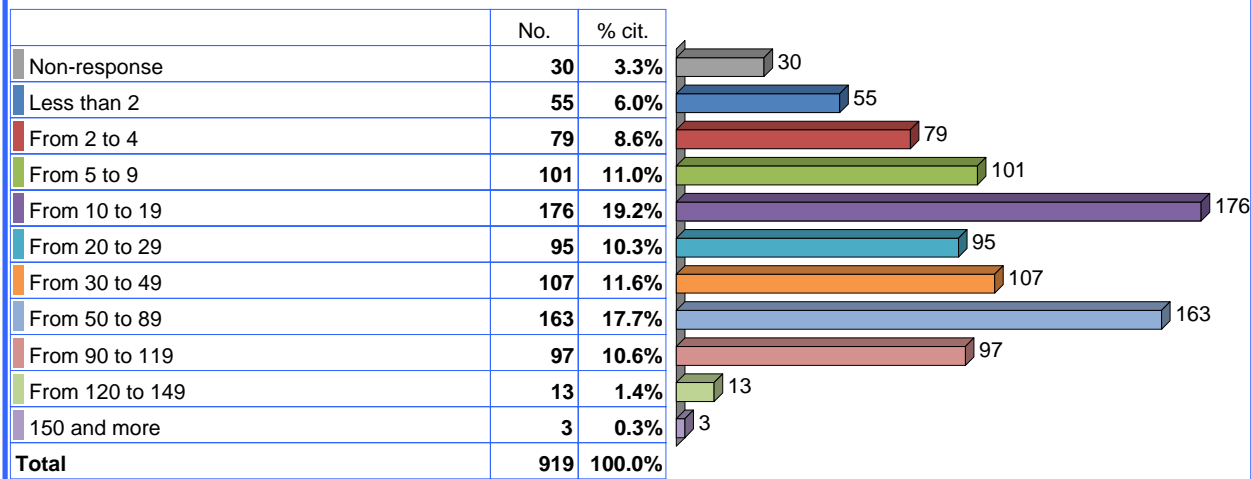
FACILITY-BASED PAID WORK

A total of 919 respondents (25.9% of the total sample) report participation in Facility-Based Paid Work. Information relative to hours worked and wages earned were the primary pieces of information obtained from the Facility-Based Paid Work respondents.

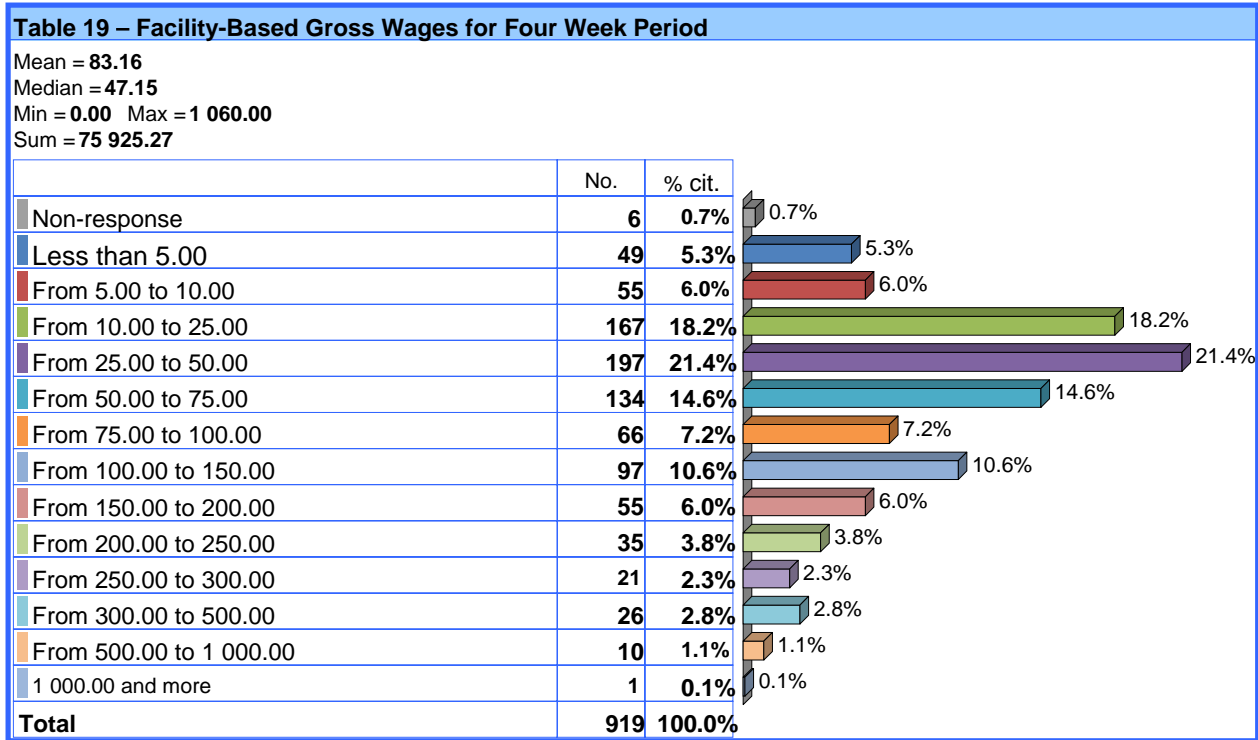
Only 889 respondents completed the question about **total number of hours** worked (Table 18). Facility-Based Paid Work respondents report they worked a total of 33,172 hours during the four weeks May 2011. The average number of hours of work for each respondent was 37.31 hours over the four-week period. The average amounts to less than ten (10) hours of work per week. The median number of work hours was 19.0 hours. Sixteen (16) respondents (1.7% of those participating in Facility-Based Work) worked 120 or more hours during the four weeks. These individuals spent an average of 30 hours or more working per week. Another 367 respondents (39.9%) worked between 7.5 and 29.75 hours during each of the four weeks. Finally, 506 respondents (55.1%) worked seven (7) or fewer hours during each of the four weeks. The maximum number of hours worked by any respondent was 175 hours or approximately forty-three (43) hours per week.

Table 18 – Facility-Based Work Total Hours for Four Week Period

Mean = 37.31
 Median = 23.00
 Min = 0 Max = 175
 Sum = 33 172



A total of 913 **Facility-Based Paid Work** respondents reported their **gross wages** earned (Table 19). Three hundred fifty-five respondents (38.9% of those participating in Facility-Based Work), reported hourly wages above the Rhode Island minimum wage of \$7.40. Another 306 respondents (33.5%) earn the minimum hourly wage. A total of 258 respondents (28.3%) report earning an hourly wage below the official minimum wage. The respondents reporting their wages earned a total of \$77,925.27 during the four weeks in May 2011. The median wage earned was \$47.15 for the four weeks or approximately \$11.79 per week. The maximum wage reported was \$1,060.



One (1) of the respondents report earning wages greater than \$1,000 during May 2011, and another 92 respondents (10.1% of those participating in Facility-Based Work) report wages greater than \$200 but less than \$999 over the four weeks. Also, 352 respondents (38.6%) earned less than \$200 but greater than \$50 over the four weeks. Finally, 468 of the respondents (51.3%) earned less than \$49 during May 2011.

The respondents who participated in Facility-Based Paid Work also provided information about their **employment longevity** (Table 20). A total of 798 respondents (86.8%) report employment ten (10) of the last twelve (12) months. Only 69 respondents (7.5%) report that they were not employed during ten (10) of the last twelve (12) months.

Table 20 – Facility-Based Work 10 of Last 12 Months

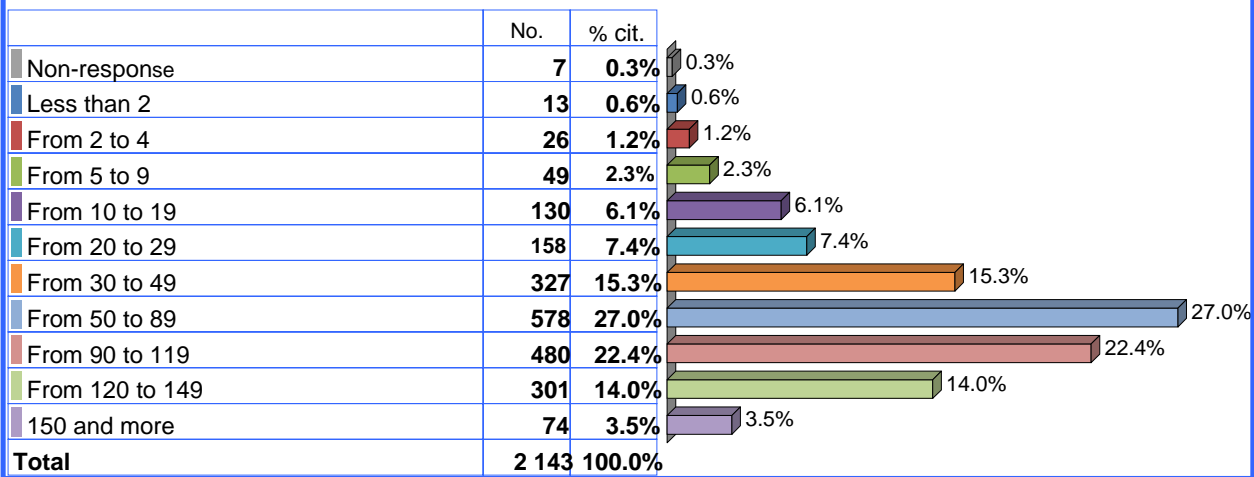
	No.	% cit.
Non-response	52	5.7%
Yes	798	86.8%
No	69	7.5%
Total	919	100.0%

FACILITY-BASED NON-WORK ACTIVITY

A total of 2,143 individuals (60.5% of the total sample) reported that they participated in Facility-Based Non-Work Activity. The total **number of hours** (Table 21) the respondents spent in Facility-Based Non-Work Activity was 159,052 during the four weeks in May 2011. The average number of hours each respondent spent in Facility-Based Non-Work Activity was 74.5 hours. At least one respondent spent 245 hours in this category of activity. On average, each respondent spent 18.7 hours each week in Facility-Based Non-Work Activity. The median number of hours for the respondents was seventy-seven (77) hours each month. Three hundred seventy-five (375) respondents (17.5% of those participating in facility-based non-work) spent 120 or more hours in Facility-Based Non-Work Activity during the four weeks or more than thirty hours each week. Another 1,058 respondents (49.5%) spent between 12.5 and 29.8 hours during the month or 3.1 to 7.5 hours each week in Facility-Based Non-Work Activity. Also, 702 respondents (32.9%) were involved in less than twelve (12) hours for the month, or three (3) hours each week of Facility-Based Non-Work Activity during May 2011.

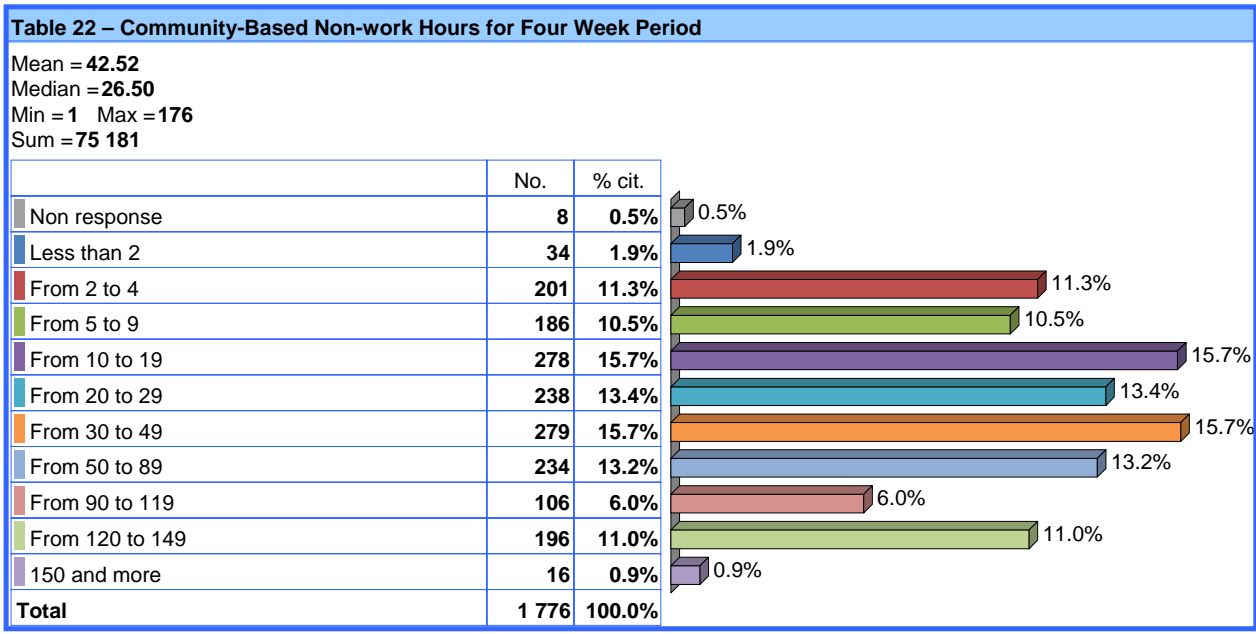
Table 21- Facility Based Non-Work Hours for Four Week Period

Mean = **74.46**
 Median = **77.00**
 Min = **0** Max = **180**
 Sum = **159 052**



COMMUNITY-BASED NON-WORK ACTIVITY

A total of 1,776 individuals (50.1% of the total sample) report participation in Community-Based Non-Work Activity. The total number of hours the respondents spent in Community-Based Non-Work Activity (Table 22) was 75,181 hours during the four weeks in May 2011. The average number of hours each respondent spent in Community-Based Non-Work Activity was 42.5 hours. At least one respondent spent 176 hours in this category of activity. On average, each respondent spent 10.6 hours each week in Community-Based Non-Work Activity. The median number of hours per month for the respondents was 26.5 hours. Two hundred twelve (212) respondents (11.9% of those participating in Community-Based Non-Work Activity) spent 120 or more hours in Community-Based Non-Work Activity during the four weeks, or more than thirty hours each week. Another 340 respondents (19.2%) spent between 12.5 and 29.8 hours during the month, or 3.1 to 7.5 hours each week in Community-Based Non-Work Activity. Also, a majority of 1,216 respondents participating in Community-Based Non-Work activity (68.8%) were involved in less than twelve (12) hours during the month or three (3) hours each week of Community-Based Non-Work Activity during May 2011.



Appendix

Appendix A - Reporting Agency		
	No.	% cit.
ACTION BASED ENTERPRISES	17	0.5%
ADELINE LAPLANTE MEMORIAL CENTER	74	2.1%
AVATAR	60	1.7%
BEHAVIORAL HEALTHCARE DEVELOPMENTAL DIS AND HOSPITALS	292	8.2%
BLACKSTONE VALLEY ARC	238	6.7%
BLACKSTONE VALLEY YOUTH FAM	21	0.6%
BRIDGES INC	53	1.5%
COMMUNITY LIVING OF RI INC	35	1.0%
COVE CENTER INC	93	2.6%
COVENTRY TOWN OF PROJECT FRIEND	15	0.4%
CRANSTON ARC	174	4.9%
FRANK OLEAN CENTER INC	66	1.9%
GATEWAY HEALTHCARE INC	7	0.2%
GATEWAYS TO CHANGE INC	107	3.0%
J ARTHUR TRUDEAU MEMORIAL CTR	268	7.6%
JAMES L MAHER CENTER	179	5.1%
JOHN E FOGARTY CENTER	192	5.4%
LIVING IN FULFILLING ENVIRONMENT	95	2.7%
LOOKING UPWARDS INC	123	3.5%
NATIONAL MENTOR HEALTH CARE	6	0.2%
NEW ENGLAND RMS INC	14	0.4%
OCEAN STATE COMMUNITY RESOURCE	209	5.9%
OPPORTUNITIES UNLIMITED	36	1.0%
PERSPECTIVES CORPORATION	222	6.3%
PROABILITY ARC OF NORTHERN BRISTOL COUNTY	22	0.6%
RE-FOCUS INC	129	3.6%
RESOURCES FOR HUMAN DEVELOPMENT	62	1.8%
RICLAS	207	5.8%
ROCKY KNOLL	2	<0.1%
SEVENHILLS HOMESTEAD GROUP	207	5.8%
SPURWINK RHODE ISLAND	58	1.6%
TRAINING THRU PLACEMENT INC	51	1.4%
UCP OF RHODE ISLAND	46	1.3%
WEST BAY RESIDENTIAL SERVICES	123	3.5%
WHITMARSH CORPORATION	4	0.1%
WORK OPPORTUNITIES UNLIMITED	35	1.0%
Total	3 542	100.0%

Appendix B - Residential Provider	
	No.
ACTION BASED ENTERPRISES	19
ADELINE LAPLANTE MEMORIAL CENTER	33
AVATAR	67
BHDDH	7
BLACKSTONE VALLEY ARC	131
BLACKSTONE VALLEY YOUTH FAM	22
BRIDGES INC	46
COMMUNITY LIVING OF RI INC	38
COVE CENTER INC	61
COVENTRY TOWN OF PROJECT FRIEND	1
CRANSTON ARC	80
DEPARTMENT OF HUMAN SERVICES	1
FRANK OLEAN CENTER INC	20
GATEWAY HEALTHCARE INC	8
GATEWAYS TO CHANGE INC	69
J ARTHUR TRUDEAU MEMORIAL CTR	149
JAMES L MAHER CENTER	111
JOHN E FOGARTY CENTER	88
LIVING IN FULFILLING ENVIRONMENT	96
LOOKING UPWARDS INC	109
MENTORED SHARED LIVING	25
NATIONAL MENTOR HEALTH CARE	6
NEW ENGLAND RMS INC	10
OCEAN STATE COMMUNITY RESOURCE	52
OCEAN STATE OPTIONS	6
OPPORTUNITIES UNLIMITED	34
PERSPECTIVES CORPORATION	179
PROABILITY ARC OF NORTHERN BRISTOL COUNTY	27
RE-FOCUS INC	132
RESOURCES FOR HUMAN DEVELOPMENT	10
RICLAS	208
ROCKY KNOLL	3
SEVENHILLS HOMESTEAD GROUP	135
SPURWINK RHODE ISLAND	40
UCP OF RHODE ISLAND	46
WEST BAY RESIDENTIAL SERVICES	121
WHITMARSH CORPORATION	4
WORK OPPORTUNITIES UNLIMITED	8
NO RESIDENTIAL PROVIDER	1 340
Total	3 542

Appendix C - Employment/Day Provider	
	No.
ACTION BASED ENTERPRISES INC	21
ADELINE LAPLANTE MEMORIAL CENTER	106
AVATAR	34
BHDDH	4
BLACKSTONE VALLEY ARC	266
BLACKSTONE VALLEY YOUTH FAM	23
BRIDGES INC	41
C O V E CENTER INC	107
COMMUNITY LIVING OF RI INC	28
CORNERSTONE ADULT SERVICES	4
COVENTRY TOWN OF PROJECT FRIEND	23
CRANSTON ARC	205
FRANK OLEAN CENTER INC	107
GATEWAY HEALTHCARE INC.	9
GATEWAYS TO CHANGE INC	102
J. ARTHUR TRUDEAU MEMORIAL CTR	292
JAMES L MAHER CENTER	225
JOHN E FOGARTY CENTER	214
LIVING IN FULFILLING ENVIRONMENT	91
LOOKING UPWARDS INC	89
NATIONAL MENTOR HEALTH CARE	2
NEW ENGLAND RMS INC	14
OCEAN STATE COMMUNITY RESOURCE	47
OCEAN STATE OPTIONS	151
OPPORTUNITIES UNLIMITED	18
PERSPECTIVES CORPORATION	136
PROABILITY ARC OF NORTHERN BRISTOL COUNTY	19
RE-FOCUS INC	135
RESOURCES FOR HUMAN DEVELOPMENT	77
RICLAS	63
ROCKY KNOLL	2
SEVENHILLS HOMESTEAD GROUP	229
SPURWINK RHODE ISLAND	48
TRAINING THRU PLACEMENT INC	81
UCP OF RHODE ISLAND	38
WEST BAY RESIDENTIAL SERVICES	95
WHITMARSH CORPORATION	1
WORK OPPORTUNITIES UNLIMITED	26
NO EMPLOYMENT/DAY PROVIDER	429
Total	3 602



ABOUT THE SHERLOCK CENTER

The mission of the Sherlock Center is to promote membership of individuals with disabilities in school, work and the community.

The Sherlock Center, founded at Rhode Island College in 1993, is a University Center for Excellence in Developmental Disabilities (UCEDD). UCEDDs are designed to increase the independence, productivity, and community integration and inclusion of individuals with developmental disabilities. There are 67 UCEDD programs in the United States. This national network is administered through the United States Department of Health and Human Services Administration on Developmental Disabilities.

Paul V. Sherlock Center on Disabilities

Rhode Island College
600 Mt. Pleasant Avenue
Providence, RI 02908

(401) 456—8072 Ph. (401) 456-8773 TDD (401) 456-8150 Fax

www.sherlockcenter.org

The Sherlock Center is supported by grants from the United States Administration on Developmental Disabilities and other federal, state, and private sources.