



FEINSTEIN SCHOOL OF EDUCATION AND HUMAN DEVELOPMENT

PROFILE OF ADMISSIONS TO GRADUATE STUDIES
5/1/2016 – 5/31/2017

UNIT STATISTICS

CONTENTS

Gender * Ethnicity * Program 2

GRE Analysis (200-800), GRE Analysis (0-6), GRE Quantitative, GRE Verbal, MAT (200-800), MAT (0-99),
GPA; Essay: Content, Conventions, Overall; Performance-Based Evaluation 4

GRE Analysis (200-800), GRE Analysis (0-6), GRE Quantitative, GRE Verbal, MAT (200-800), MAT (0-99),
Professional Goals Essay: Content, Conventions, Overall, Performance-Based Evaluation, GPA * Gender *
Ethnicity 5

GRE Analysis (200-800), GRE Analysis (0-6), GRE Quantitative (200-800), GRE Verbal (200-800) * Gender *
Ethnicity (graph) 7

MAT (200-800), MAT (0-99), GPA * Gender * Ethnicity(graph)..... 8

Professional Goals Essay: Content, Conventions, Overall; Performance-Based Evaluation * Gender * Ethnicity
(graph)..... 9

Candidate Reference Form Scores..... 10

Candidate Reference Form (Q1-Q12) Scores * Gender * Ethnicity..... 11

Candidate Reference Form (Q1-12) Scores * Gender * Ethnicity (graph)..... 12

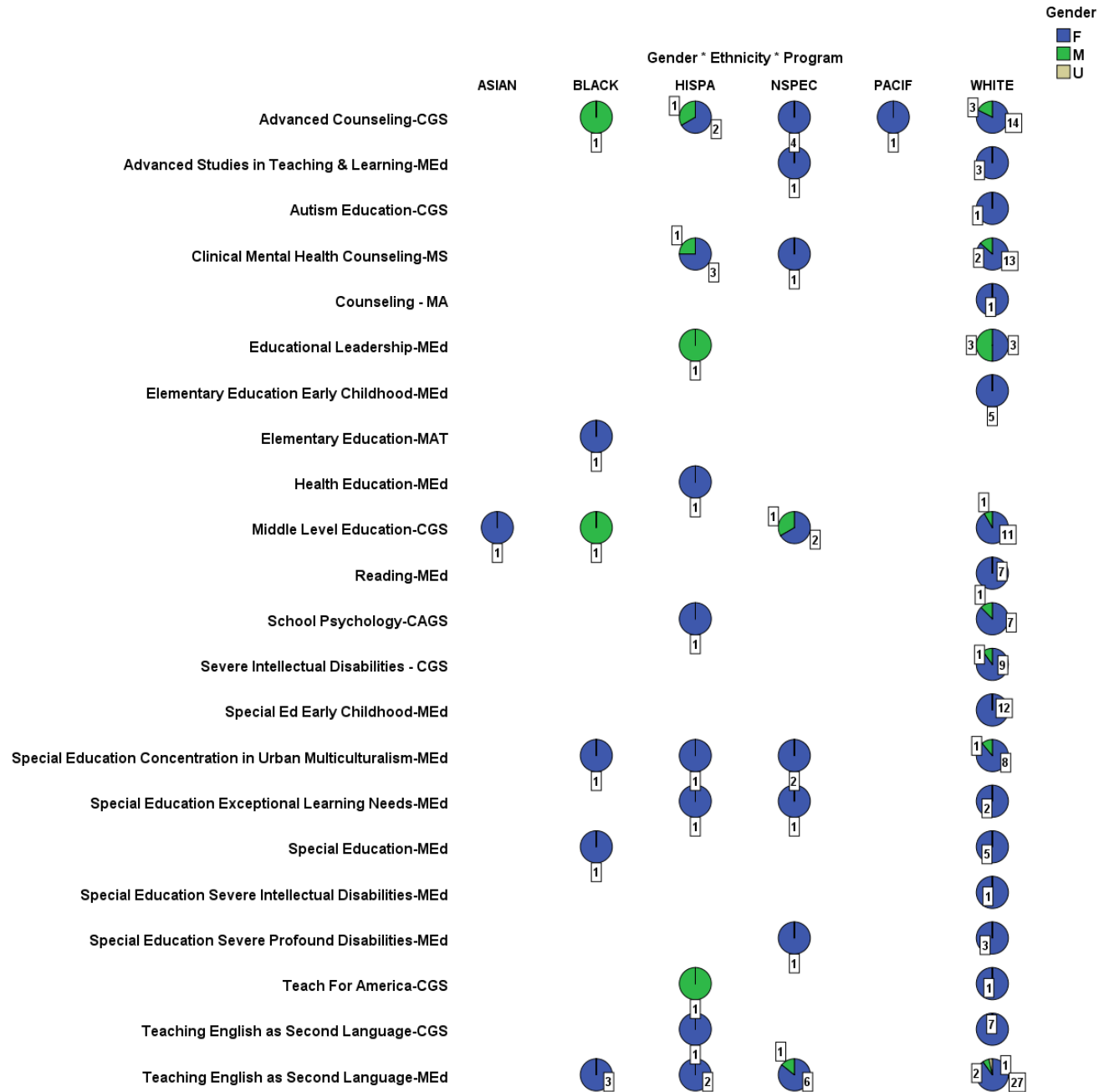
Gender * Ethnicity * Program

Gender * Ethnicity * Program Crosstabulation

Count

Program		Ethnicity					Total	
		ASIAN	BLACK	HISPA	NSPEC	PACIF		WHITE
Advanced Counseling-CGS	Gender F		0	2	4	1	14	21
	M		1	1	0	0	3	5
	Total		1	3	4	1	17	26
Advanced Studies in Teaching & Learning-MEd	Gender F				1		3	4
	Total				1		3	4
Autism Education-CGS	Gender F						1	1
	Total						1	1
Clinical Mental Health Counseling-MS	Gender F			3	1		13	17
	M			1	0		2	3
	Total			4	1		15	20
Counseling - MA	Gender F						1	1
	Total						1	1
Educational Leadership-MEd	Gender F			0			3	3
	M			1			3	4
	Total			1			6	7
Elementary Education Early Childhood-MEd	Gender F						5	5
	Total						5	5
Elementary Education-MAT	Gender F		1					1
	Total		1					1
Health Education-MEd	Gender F			1				1
	Total			1				1
Middle Level Education-CGS	Gender F	1	0		2		11	14
	M	0	1		1		1	3
	Total	1	1		3		12	17
Reading-MEd	Gender F						7	7
	Total						7	7
School Psychology-CAGS	Gender F			1			7	8
	M			0			1	1
	Total			1			8	9
Severe Intellectual Disabilities - CGS	Gender F						9	9
	M						1	1
	Total						10	10
Special Ed Early Childhood-MEd	Gender F						12	12
	Total						12	12
Special Education Concentration in Urban Multiculturalism-MEd	Gender F		1	1	2		8	12
	M		0	0	0		1	1
	Total		1	1	2		9	13
Special Education Exceptional Learning Needs-MEd	Gender F			1	1		2	4
	Total			1	1		2	4
Special Education Severe Intellectual Disabilities-MEd	Gender F						1	1
	Total						1	1
Special Education Severe Profound Disabilities-MEd	Gender F				1		3	4
	Total				1		3	4
Special Education-MEd	Gender F		1				5	6
	Total		1				5	6
Teach For America-CGS	Gender F			0			1	1
	M			1			0	1
	Total			1			1	2
Teaching English as Second Language-CGS	Gender F			1			7	8
	Total			1			7	8
Teaching English as Second Language-MEd	Gender F		3	2	6		27	38
	M		0	0	1		2	3
	U		0	0	0		1	1
	Total		3	2	7		30	42
Total	Gender F	1	6	12	18	1	140	178
	M	0	2	4	2	0	14	22
	U	0	0	0	0	0	1	1
	Total	1	8	16	20	1	155	201

Gender * Ethnicity * Program (graph)



GRE Analysis (200-800), GRE Analysis (0-6), GRE Quantitative, GRE Verbal, MAT (200-800), MAT (0-99), GPA; Essay: Content, Conventions, Overall; Performance-Based Evaluation

GRE Analysis (200-800), GRE Analysis (0-6), GRE Quantitative, GRE Verbal, MAT (200-800), MAT (0-99), GPA; Essay: Content, Conventions, Overall; Performance-Based Evaluation

	GRE Analysis (0-6)	GRE Analysis (200-800)	GRE Quantitative (200-800)	GRE Verbal (200-800)	MAT (0-99)	MAT (200-800)	GPA	Essay Content*	Essay Conventions*	Essay Overall*	Performance Based Evaluation**
Mean	3.74	540.00	512.00	432.00	60.00	396.51	3.40	3.29	3.28	3.24	3.34
Std. Deviation	.679	.	59.749	74.632	2.828	19.150	.465	.502	.474	.477	.556
Median	4.00	540.00	520.00	440.00	60.00	393.00	3.48	3.00	3.00	3.00	3.00
N	35	1	5	5	2	39	153	182	182	183	170

* Rating: 1 – Unacceptable, 2 – Revise/Resubmit, 3 – Acceptable, 4 – Exemplary; ** Rating: 1 – Unacceptable, 2 – Developing, 3 – Acceptable, 4 – Exemplary

**GRE Analysis (200-800), GRE Analysis (0-6), GRE Quantitative, GRE Verbal, MAT (200-800), MAT (0-99), Professional Goals Essay:
Content, Conventions, Overall, Performance-Based Evaluation, GPA * Gender * Ethnicity**

GRE Analysis (200-800), GRE Analysis (0-6), GRE Quantitative, GRE Verbal, MAT (200-800), MAT (0-99), Professional Goals Essay: Content, Conventions, Overall, Performance-Based Evaluation, GPA * Gender * Ethnicity														
Ethnicity	Gender		GRE Analysis (0-6)	GRE Analysis (200-800)	GRE Quantitative (200-800)	GRE Verbal (200-800)	MAT (0-99)	MAT (200-800)	GPA	Essay Content*	Essay Conventions*	Essay Overall*	Performance Based Evaluation**	
ASIAN	F	Mean								3.00	3.00	3.00	4.00	
		Std. Deviation												
		Median									3.00	3.00	3.00	4.00
	Total	N									1	1	1	1
		Mean									3.00	3.00	3.00	4.00
		Std. Deviation												
BLACK	F	Mean	4.00						3.41	3.60	3.60	3.60	3.00	
		Std. Deviation							0.47	0.55	0.55	0.55	0.00	
		Median	4.00						3.33	4.00	4.00	4.00	3.00	
	M	N	1						6	5	5	5	4	
		Mean							2.81	3.50	3.50	3.50	3.00	
		Std. Deviation								0.71	0.71	0.71	0.00	
Total	Median							2.81	3.50	3.50	3.50	3.00		
	N							1	2	2	2	2		
	Mean	4.00						3.32	3.57	3.57	3.57	3.00		
HISPA	F	Std. Deviation							0.49	0.54	0.54	0.54	0.00	
		Median	4.00						3.32	4.00	4.00	4.00	3.00	
		N	1						7	7	7	7	6	
	M	Mean	4.00		550.00	470.00			405.00	3.47	3.45	3.36	3.36	3.27
		Std. Deviation	0.00						0.00	0.30	0.52	0.51	0.51	0.47
		Median	4.00		550.00	470.00			405.00	3.42	3.00	3.00	3.00	3.00
Total	N	2		1	1			2	11	11	11	11	11	
	Mean	4.00						388.00	3.03	3.00	3.00	3.00	3.50	
	Std. Deviation	0.00							0.60	0.00	0.00	0.00	0.58	
Total	Median	4.00						388.00	3.11	3.00	3.00	3.00	3.50	
	N	2						1	4	4	4	4	4	
	Mean	4.00		550.00	470.00			399.33	3.35	3.33	3.27	3.27	3.33	
NSPEC	F	Std. Deviation	0.00						9.82	0.43	0.49	0.46	0.46	0.49
		Median	4.00		550.00	470.00			405.00	3.40	3.00	3.00	3.00	3.00
		N	4		1	1			3	15	15	15	15	
	M	Mean	3.67	540.00	520.00	440.00			391.67	3.31	3.22	3.28	3.22	3.17
		Std. Deviation	0.76						0.58	0.48	0.43	0.46	0.43	0.38
		Median	3.50	540.00	520.00	440.00			392.00	3.39	3.00	3.00	3.00	3.00
Total	N	3	1	1	1			3	14	18	18	18	18	
	Mean	4.50							3.35	3.00	3.00	3.00	3.50	
	Std. Deviation									0.00	0.00	0.00	0.71	
Total	Median	4.50							3.35	3.00	3.00	3.00	3.50	
	N	1						1	2	2	2	2	2	
	Mean	3.88	540.00	520.00	440.00			391.67	3.31	3.20	3.25	3.20	3.20	
Total	Std. Deviation	0.75						0.58	0.46	0.41	0.44	0.41	0.41	
	Median	4.00	540.00	520.00	440.00			392.00	3.35	3.00	3.00	3.00	3.00	
	N	4	1	1	1			3	15	20	20	20	20	

continued

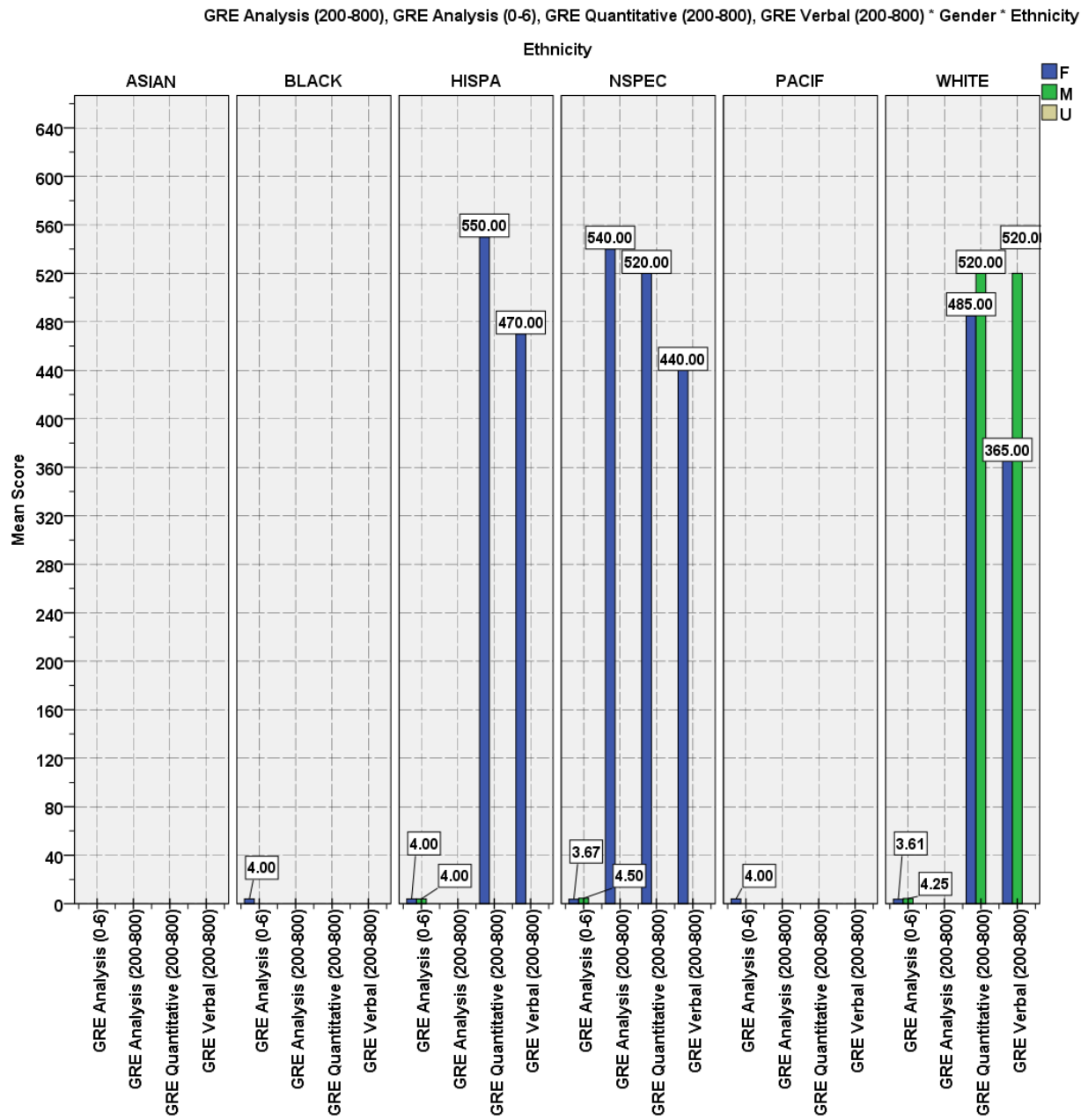
* Rating: 1 – Unacceptable, 2 – Revise/Resubmit, 3 – Acceptable, 4 – Exemplary. ** Rating: 1 – Unacceptable, 2 – Developing, 3 – Acceptable, 4 – Exemplary

GRE Analysis (200-800), GRE Analysis (0-6), GRE Quantitative, GRE Verbal, MAT (200-800), MAT (0-99), Professional Goals Essay: Content, Conventions, Overall, Performance-Based Evaluation), GPA * Gender * Ethnicity

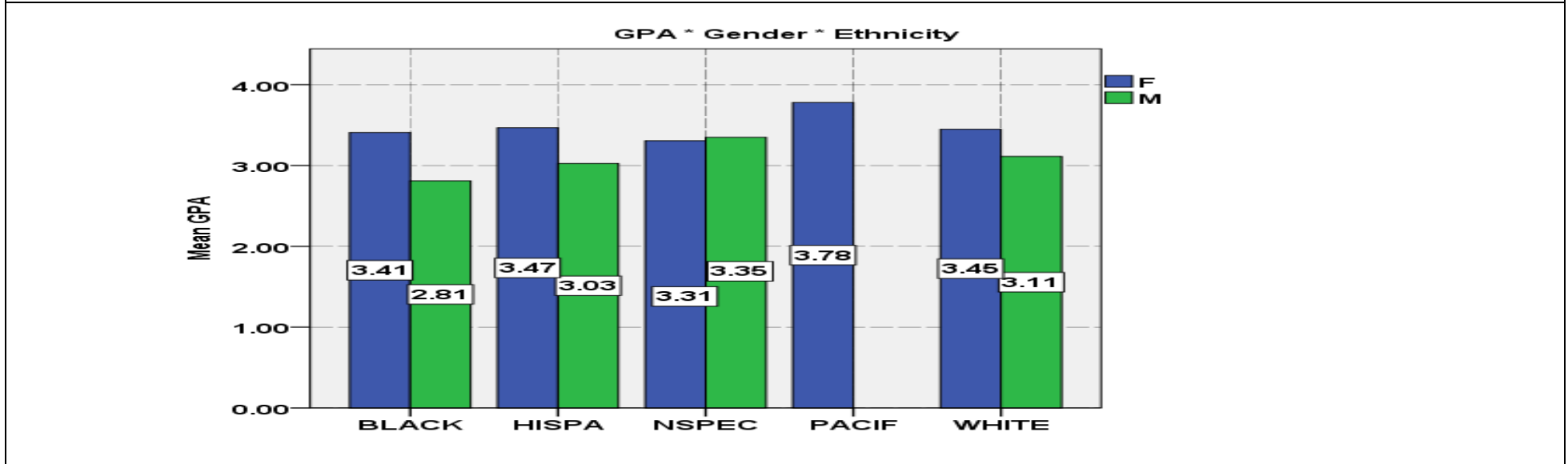
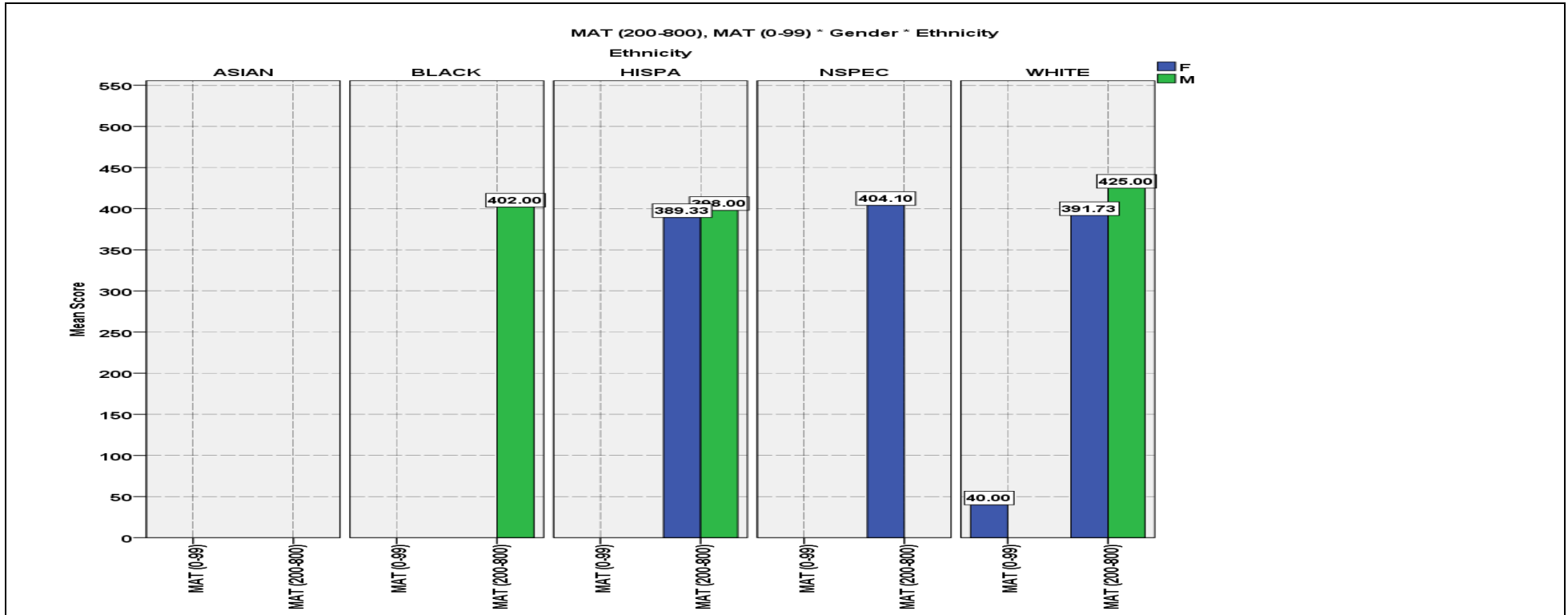
GRE Analysis (200-800), GRE Analysis (0-6), GRE Quantitative, GRE Verbal, MAT (200-800), MAT (0-99), Professional Goals Essay: Content, Conventions, Overall, Performance-Based Evaluation, GPA * Gender * Ethnicity														
Ethnicity	Gender		GRE Analysis (0-6)	GRE Analysis (200-800)	GRE Quantitative (200-800)	GRE Verbal (200-800)	MAT (0-99)	MAT (200-800)	GPA	Essay Content*	Essay Conventions*	Essay Overall*	Perfromance Based Evaluation**	
PACIF	F	Mean	4.00						3.78	3.00	3.00	3.00	3.00	
		Std. Deviation												
		Median	4.00						3.78	3.00	3.00	3.00	3.00	
	Total	N	1						1	1	1	1	1	
		Mean	4.00						3.78	3.00	3.00	3.00	3.00	
		Std. Deviation												
WHITE	F	Mean	3.61		485.00	365.00	58.00	396.66	3.45	3.28	3.27	3.22	3.36	
		Std. Deviation	0.75		106.07	63.64		20.98	0.44	0.52	0.48	0.49	0.60	
		Median	3.50		485.00	365.00	58.00	393.50	3.57	3.00	3.00	3.00	3.00	
	M	N	23		2	2	1	32	104	125	126	126	116	
		Mean	4.25		520.00	520.00	62.00	398.00	3.11	3.33	3.36	3.33	3.55	
		Std. Deviation	0.35						0.67	0.49	0.51	0.49	0.52	
U	Median	4.25		520.00	520.00	62.00	398.00	3.15	3.00	3.00	3.00	4.00		
	N	2		1	1	1	1	11	12	11	12	11		
	Mean								4.00	3.00	3.00			
Total	F	Std. Deviation								4.00	3.00	3.00		
		Median								1	1	1		
		N												
	M	Mean	3.66		496.67	416.67	60.00	396.70	3.42	3.29	3.28	3.23	3.38	
		Std. Deviation	0.75		77.68	100.17	2.83	20.65	0.47	0.52	0.48	0.49	0.59	
		Median	3.50		520.00	410.00	60.00	394.00	3.54	3.00	3.00	3.00	3.00	
U	N	25		3	3	2	33	115	138	138	139	127		
	Mean													
	Std. Deviation													
Total	F	Mean	3.67	540.00	510.00	410.00	58.00	396.70	3.44	3.29	3.28	3.24	3.32	
		Std. Deviation	0.70		68.80	64.81		19.62	0.43	0.51	0.48	0.48	0.56	
		Median	3.50	540.00	535.00	425.00	58.00	393.00	3.53	3.00	3.00	3.00	3.00	
	M	N	30	1	4	4	1	37	136	161	162	162	151	
		Mean	4.20		520.00	520.00	62.00	393.00	3.09	3.25	3.26	3.25	3.47	
		Std. Deviation	0.27					7.07	0.60	0.44	0.45	0.44	0.51	
	U	Median	4.00		520.00	520.00	62.00	393.00	3.15	3.00	3.00	3.00	3.00	
		N	5		1	1	1	2	17	20	19	20	19	
		Mean								4.00	3.00	3.00		
	Total	F	Std. Deviation								4.00	3.00	3.00	
			Median								1	1	1	
			N											
M		Mean	3.74	540.00	512.00	432.00	60.00	396.51	3.40	3.29	3.28	3.24	3.34	
		Std. Deviation	0.68		59.75	74.63	2.83	19.15	0.47	0.50	0.47	0.48	0.56	
		Median	4.00	540.00	520.00	440.00	60.00	393.00	3.48	3.00	3.00	3.00	3.00	
U	N	35	1	5	5	2	39	153	182	182	183	170		
	Mean													
	Std. Deviation													

* Rating: 1 – Unacceptable, 2 – Revise/Resubmit, 3 – Acceptable, 4 – Exemplary. ** Rating: 1 – Unacceptable, 2 – Developing, 3 – Acceptable, 4 – Exemplary

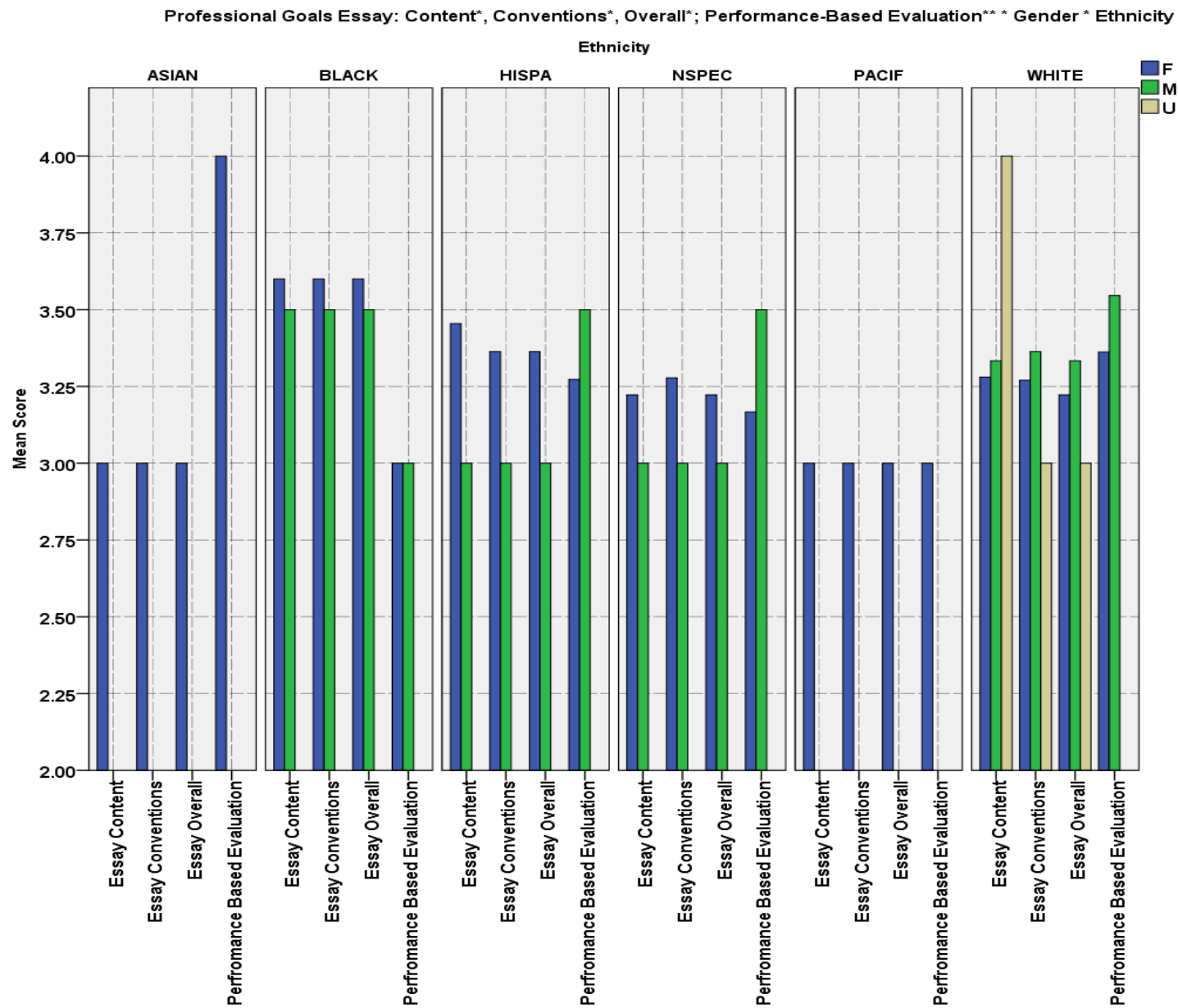
GRE Analysis (200-800), GRE Analysis (0-6), GRE Quantitative (200-800), GRE Verbal (200-800) * Gender * Ethnicity (graph)



MAT (200-800), MAT (0-99), GPA * Gender * Ethnicity (graph)



Professional Goals Essay: Content, Conventions, Overall; Performance-Based Evaluation * Gender * Ethnicity (graph)



* Rating: 1- Unacceptable, 2 - Revise/resubmit, 3 - Acceptable, 4 - Exemplary. ** Rating: 1- Unacceptable, 2 -Developing, 3 - Acceptable, 4 - Exemplary.

Candidate Reference Form Scores

CANDIDATE REFERENCE FORM

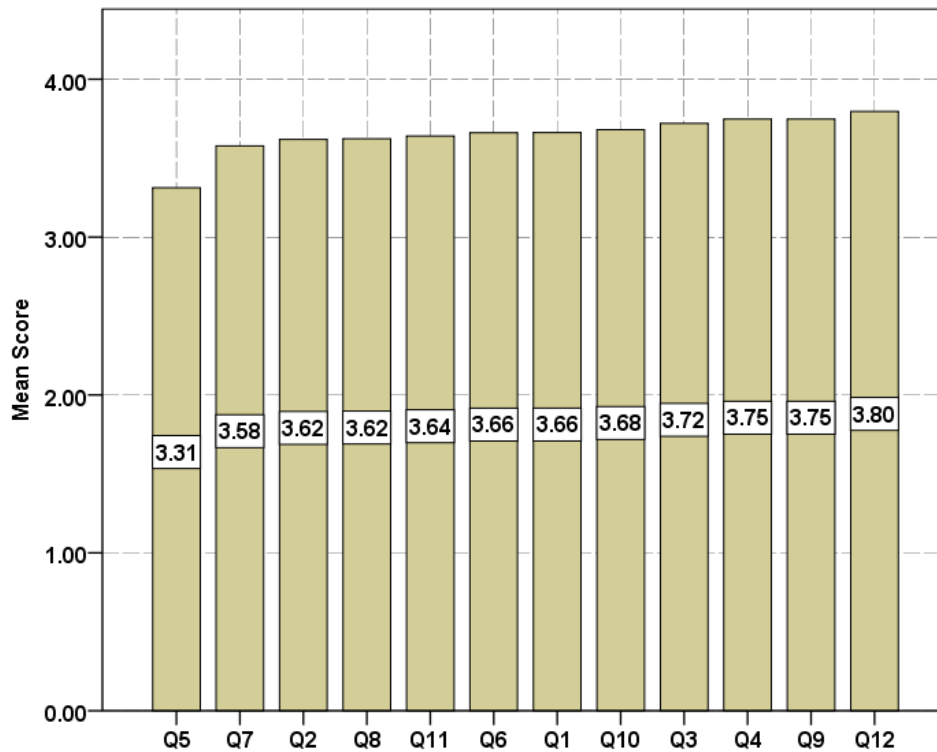
Please evaluate the following attributes of the candidate on a four-point scale as indicated:
1 = below average; 2 = average; 3 = above average; 4 = high level;
 or use NA for not able to judge.

Q1. Capacity for insight	1	2	3	4
Q2. Clarity of goals	1	2	3	4
Q3. Intellectual curiosity	1	2	3	4
Q4. Motivation and initiative	1	2	3	4
Q5. Rapport with children and youth	1	2	3	4
Q6. Rapport with adults	1	2	3	4
Q7. Emotional stability	1	2	3	4
Q8. Adaptability to change	1	2	3	4
Q9. Reliability and dependability	1	2	3	4
Q10. Ability to organize ideas or tasks	1	2	3	4
Q11. Oral and written communication skills	1	2	3	4
Q12. Overall potential	1	2	3	4

Candidate Reference Forms (Q1-Q12)

	Q1	Q2	Q3	Q4	Q5	Q6	Q7	Q8	Q9	Q10	Q11	Q12
Mean	3.66	3.62	3.72	3.75	3.31	3.66	3.58	3.62	3.75	3.68	3.64	3.80
Std. Deviation	.42	.40	.37	.43	1.00	.51	.61	.51	.44	.46	.38	.31
Median	3.67	3.67	4.00	4.00	3.67	3.67	3.67	3.67	4.00	3.67	3.67	4.00
N	189	189	189	189	189	189	189	189	189	189	189	189

Candidate Reference Form (Q1-Q12)



Candidate Reference Form (Q1-Q12) Scores * Gender * Ethnicity

Candidate Reference Form (Q1-Q12) Scores * Gender * Ethnicity†																
Ethnicity	Gender		Q1	Q2	Q3	Q4	Q5	Q6	Q7	Q8	Q9	Q10	Q11	Q12		
ASIAN	F	Mean	4.00	3.67	4.00	3.67	4.00	4.00	4.00	3.67	3.67	3.33	3.33	4.00	4.00	
		Std. Deviation														
		Median	4.00	3.67	4.00	3.67	4.00	3.67	4.00	4.00	3.67	3.67	3.33	3.33	4.00	4.00
	Total	N	1	1	1	1	1	1	1	1	1	1	1	1	1	1
		Mean	4.00	3.67	4.00	3.67	4.00	4.00	4.00	4.00	3.67	3.67	3.33	3.33	4.00	4.00
		Std. Deviation														
BLACK	F	Mean	3.80	3.70	3.70	3.70	3.80	3.70	3.70	3.50	3.70	3.70	3.70	3.70	3.70	
		Std. Deviation	0.45	0.45	0.45	0.45	0.27	0.45	0.45	0.50	0.45	0.45	0.45	0.45	0.45	
		Median	4.00	4.00	4.00	4.00	4.00	4.00	4.00	4.00	3.50	4.00	4.00	4.00	4.00	
	M	N	5	5	5	5	5	5	5	5	5	5	5	5	5	
		Mean	4.00	3.83	4.00	4.00	2.67	4.00	4.00	4.00	4.00	4.00	3.83	3.83	4.00	
		Std. Deviation	0.00	0.24	0.00	0.00	1.89	0.00	0.00	0.00	0.00	0.00	0.24	0.24	0.00	
Total	Median	4.00	3.83	4.00	4.00	2.67	4.00	4.00	4.00	4.00	4.00	3.83	3.83	4.00		
	N	2	2	2	2	2	2	2	2	2	2	2	2	2		
	Mean	3.86	3.74	3.79	3.79	3.48	3.79	3.79	3.64	3.79	3.74	3.74	3.74	3.79		
HISPA	F	Std. Deviation	0.38	0.38	0.39	0.39	0.97	0.39	0.39	0.48	0.39	0.38	0.38	0.38		
		Median	4.00	4.00	4.00	4.00	4.00	4.00	4.00	4.00	4.00	4.00	4.00	4.00		
		N	7	7	7	7	7	7	7	7	7	7	7	7		
	M	Mean	3.73	3.79	3.85	3.94	3.55	3.85	3.61	3.79	3.85	3.82	3.71	3.88		
		Std. Deviation	0.29	0.27	0.17	0.13	0.72	0.23	0.39	0.27	0.23	0.23	0.30	0.22		
		Median	3.67	4.00	4.00	4.00	4.00	4.00	3.67	4.00	4.00	4.00	3.67	4.00		
Total	N	11	11	11	11	11	11	11	11	11	11	11	11			
	Mean	3.92	3.75	3.83	3.92	3.33	4.00	3.92	3.83	3.92	3.75	3.75	4.00			
	Std. Deviation	0.17	0.17	0.19	0.17	1.33	0.00	0.17	0.19	0.17	0.17	0.32	0.00			
NSPEC	F	Median	4.00	3.67	3.83	4.00	4.00	4.00	4.00	3.83	4.00	3.67	3.83	4.00		
		N	4	4	4	4	4	4	4	4	4	4	4	4		
		Mean	3.78	3.78	3.84	3.93	3.49	3.89	3.69	3.80	3.87	3.80	3.72	3.91		
	M	Std. Deviation	0.27	0.24	0.17	0.14	0.87	0.21	0.37	0.25	0.21	0.21	0.29	0.20		
		Median	4.00	3.67	4.00	4.00	4.00	4.00	3.67	4.00	4.00	3.67	3.67	4.00		
		N	15	15	15	15	15	15	15	15	15	15	15	15		
PACIF	F	Mean	3.67	4.00	4.00	4.00	2.33	3.33	3.67	3.67	4.00	4.00	3.33	4.00		
		Std. Deviation	0.35	0.34	0.39	0.35	0.95	0.53	0.31	0.36	0.49	0.26	0.28	0.26		
		Median	3.67	3.50	3.67	4.00	4.00	4.00	4.00	4.00	4.00	4.00	3.50	4.00		
	Total	N	15	15	15	15	15	15	15	15	15	15	15	15		
		Mean	3.00	3.33	3.00	3.33	3.67	3.33	2.33	3.67	3.33	3.33	3.33	3.67		
		Std. Deviation														
WHITE	F	Mean	3.67	3.67	4.00	4.00	2.33	3.33	3.67	3.67	4.00	4.00	3.33	4.00		
		Std. Deviation	0.41	0.39	0.38	0.47	0.96	0.50	0.66	0.51	0.46	0.48	0.38	0.29		
		Median	3.67	3.67	4.00	4.00	3.67	3.67	3.67	3.67	4.00	3.67	3.67	4.00		
	M	N	134	134	134	134	134	134	134	134	134	134	134	134		
		Mean	3.48	3.30	3.64	3.62	2.63	3.44	3.51	3.23	3.67	3.44	3.43	3.68		
		Std. Deviation	0.62	0.58	0.37	0.32	1.49	0.82	0.63	0.79	0.43	0.62	0.58	0.48		
U	Median	3.58	3.42	3.58	3.58	3.50	3.75	3.67	3.50	3.67	3.58	3.58	4.00			
	N	14	14	14	14	14	14	14	14	14	14	14	14			
	Mean	3.50	3.50	3.50	3.50	3.50	3.50	3.50	3.50	3.50	3.50	3.50	3.50			
Total	F	Std. Deviation	3.50	3.50	3.50	3.50	3.50	3.50	3.50	3.50	3.50	3.50	3.50	3.50		
		Median	3.50	3.50	3.50	3.50	3.50	3.50	3.50	3.50	3.50	3.50	3.50	3.50		
		N	1	1	1	1	1	1	1	1	1	1	1	1		
	M	Mean	3.65	3.60	3.71	3.73	3.28	3.63	3.54	3.59	3.74	3.66	3.63	3.78		
		Std. Deviation	0.43	0.42	0.38	0.46	1.03	0.53	0.65	0.55	0.46	0.49	0.40	0.32		
		Median	3.67	3.67	4.00	4.00	3.67	3.67	3.67	3.67	4.00	3.67	3.67	4.00		
U	N	149	149	149	149	149	149	149	149	149	149	149	149			
	Mean	3.67	3.64	3.73	3.76	3.37	3.67	3.58	3.65	3.75	3.70	3.66	3.80			
	Std. Deviation	0.40	0.38	0.37	0.44	0.93	0.48	0.61	0.48	0.45	0.45	0.37	0.29			
Total	F	Median	3.67	3.67	4.00	4.00	3.67	3.67	3.67	3.67	4.00	4.00	3.67	4.00		
		N	167	167	167	167	167	167	167	167	167	167	167	167		
		Mean	3.59	3.44	3.68	3.70	2.82	3.60	3.58	3.44	3.73	3.53	3.52	3.77		
	M	Std. Deviation	0.56	0.52	0.36	0.31	1.42	0.71	0.62	0.72	0.39	0.53	0.51	0.41		
		Median	3.67	3.50	3.67	3.67	3.50	4.00	3.83	3.67	3.83	3.67	3.67	4.00		
		N	21	21	21	21	21	21	21	21	21	21	21	21		
U	Mean	3.50	3.50	3.50	3.50	3.50	3.50	3.50	3.50	3.50	3.50	3.50	3.50			
	Std. Deviation															
	Median	3.50	3.50	3.50	3.50	3.50	3.50	3.50	3.50	3.50	3.50	3.50	3.50			
Total	N	1	1	1	1	1	1	1	1	1	1	1	1			
	Mean	3.66	3.62	3.72	3.75	3.31	3.66	3.58	3.62	3.75	3.68	3.64	3.80			
	Std. Deviation	0.42	0.40	0.37	0.43	1.00	0.51	0.61	0.51	0.44	0.46	0.38	0.31			
Total			Median	3.67	3.67	4.00	4.00	3.67	3.67	3.67	4.00	3.67	3.67	4.00		
Total			N	189	189	189	189	189	189	189	189	189	189	189		

† Candidates have multiple references (q1-q12 sets), mean for each question is calculated, mean value reported is a "mean of the mean" or each question.

Candidate Reference Form (Q1-12) Scores * Gender * Ethnicity (graph)

