



FEINSTEIN SCHOOL OF EDUCATION AND HUMAN DEVELOPMENT

PROFILE OF ADMISSIONS TO GRADUATE STUDIES
5/1/2011 – 5/31/2012

UNIT STATISTICS

CONTENTS

Gender * Ethnicity * Program * Term.....	2
GRE Analysis (200-800), GRE Analysis (0-6), GRE Quantitative, GRE Verbal, MAT (200-800), MAT (0-99) * Term	7
GRE Analysis (200-800), GRE Analysis (0-6), GRE Quantitative, GRE Verbal, MAT (200-800), MAT (0-99, Professional Goals Essay: Content, Conventions, Overall, Performance-Based Evaluation), GPA * Gender * Ethnicity * Term	9
Candidate Reference Form Scores * Term.....	14
Candidate Reference (Q1-12) Form Scores * Gender * Ethnicity * Term	16

Gender * Ethnicity * Program * Term

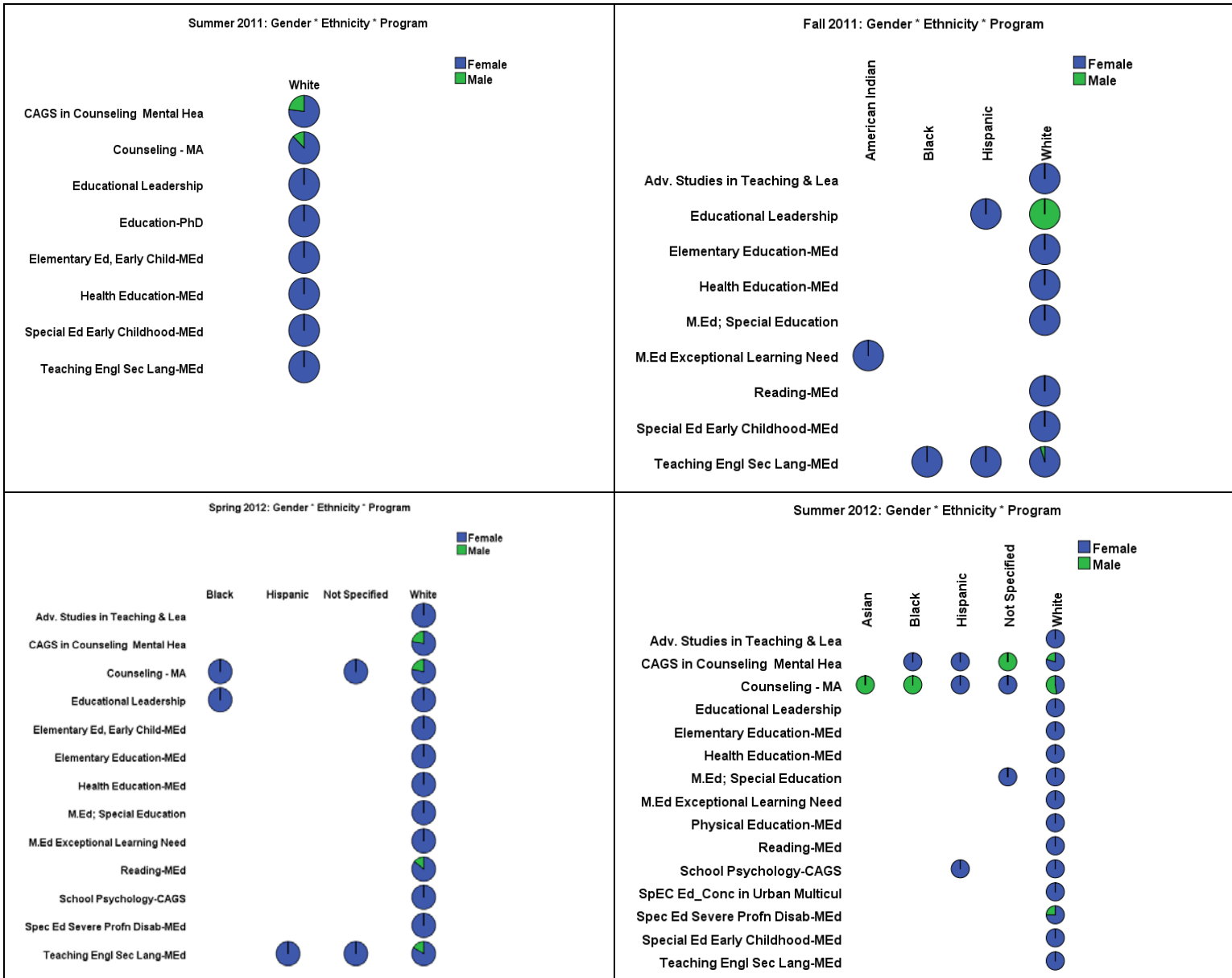
Gender * Ethnicity * Program * Term									
Term	Program	Gender	Ethnicity					Total	
			American Indian	Asian	Black	Hispanic	Not Specified		White
Summer 2011	CAGS in Counseling Mental Hea	F						10	10
		M						3	3
		Total						13	13
	Counseling - MA	F						7	7
		M						1	1
		Total						8	8
	Education-PhD	F						1	1
		M						1	1
		Total						2	2
	Educational Leadership	F						2	2
		M						2	2
		Total						1	1
	Elementary Ed, Early Child-MEd	F						1	1
		M						1	1
		Total						2	2
	Health Education-MEd	F						2	2
M							2	2	
	Total						1	1	
Special Ed Early Childhood-MEd	F						1	1	
	M						1	1	
	Total						1	1	
Teaching Engl Sec Lang-MEd	F						1	1	
	M						1	1	
	Total						25	25	
Total	F						4	4	
	M						25	29	
	Total						4	29	

Gender * Ethnicity * Program * Term									
Term	Program	Gender	Ethnicity					Total	
			American Indian	Asian	Black	Hispanic	Not Specified		White
Fall 2011	Adv. Studies in Teaching & Lea	F						2	2
		M						2	2
		Total						0	1
	Educational Leadership	F				1		0	1
		M				0		1	1
		Total				1		1	2
	Elementary Education-MEd	F						1	1
		M						1	1
		Total						1	1
	Health Education-MEd	F						1	1
		M						1	1
		Total						1	1
	M.Ed Exceptional Learning Need	F		1					1
		M		1					1
		Total						2	2
	M.Ed; Special Education	F						2	2
M							2	2	
	Total						1	1	
Reading-MEd	F						1	1	
	M						1	1	
	Total						1	1	
Special Ed Early Childhood-MEd	F						1	1	
	M						1	1	
	Total						21	24	
Teaching Engl Sec Lang-MEd	F			1	2			1	1
	M			0	0			1	1
	Total			1	2			22	25
Total	F		1	1	3			29	34
	M		0	0	0			2	2
	Total		1	1	3			31	36

Gender * Ethnicity * Program * Term									
Term	Program	Gender	Ethnicity					Total	
			American Indian	Asian	Black	Hispanic	Not Specified		White
Spring 2012	Adv. Studies in Teaching & Lea	F						3	3
		M						3	3
		Total						7	7
	CAGS in Counseling Mental Hea	F						2	2
		M						9	9
		Total						2	14
	Counseling - MA	F			2		1	14	17
		M			0		0	4	4
		Total			2		1	18	21
	Educational Leadership	F			1			2	3
		M			1			2	3
		Total						1	1
	Elementary Ed, Early Child-MEd	F						1	1
		M						1	1
		Total						1	1
	Elementary Education-MEd	F						1	1
M							1	1	
	Total						1	1	
Health Education-MEd	F						1	1	
	M						1	1	
	Total						2	2	
M.Ed Exceptional Learning Need	F						2	2	
	M						2	2	
	Total						1	1	
M.Ed; Special Education	F						1	1	
	M						1	1	
	Total						6	6	
Reading-MEd	F						1	1	
	M						1	1	
	Total						1	1	
School Psychology-CAGS	F						1	1	
	M						1	1	
	Total						1	1	
Spec Ed Severe Profn Disab-MEd	F						1	1	
	M						1	1	
	Total						1	1	
Teaching Engl Sec Lang-MEd	F				1	1	5	7	
	M				0	0	1	1	
	Total				1	1	6	8	
Total	F			3	1	2	45	51	
	M			0	0	0	8	8	
	Total			3	1	2	53	59	

Gender * Ethnicity * Program * Term									
Term	Program	Gender	Ethnicity					Total	
			American Indian	Asian	Black	Hispanic	Not Specified		White
Summer 2012	Adv. Studies in Teaching & Lea	F						1	1
		M						1	1
		Total						7	7
	CAGS in Counseling Mental Hea	F			4	5	0	27	36
		M			0	0	2	7	9
		Total			4	5	2	34	45
	Counseling - MA	F			0	0	1	10	12
		M			1	3	0	11	15
		Total			1	3	1	21	27
	Educational Leadership	F						6	6
		M						6	6
		Total						2	2
	Elementary Education-MEd	F						2	2
		M						2	2
		Total						1	1
	Health Education-MEd	F						1	1
M							1	1	
	Total						2	2	
M.Ed Exceptional Learning Need	F						2	2	
	M						2	2	
	Total						1	1	
M.Ed; Special Education	F						1	3	
	M						1	3	
	Total						1	1	
Physical Education-MEd	F						1	1	
	M						1	1	
	Total						5	5	
Reading-MEd	F						5	5	
	M						5	5	
	Total						1	1	
School Psychology-CAGS	F				1		7	8	
	M				1		7	8	
	Total						3	3	
Spec Ed Severe Profn Disab-MEd	F						1	1	
	M						1	1	
	Total						1	1	
SpEC Ed_Conc in Urban Multicul	F						1	1	
	M						1	1	
	Total						2	2	
Special Ed Early Childhood-MEd	F						2	2	
	M						2	2	
	Total						10	10	
Teaching Engl Sec Lang-MEd	F						10	10	
	M						10	10	
	Total						0	4	
Total	F			4	7	2	81	94	
	M			1	3	0	19	25	
	Total			1	7	7	4	100	

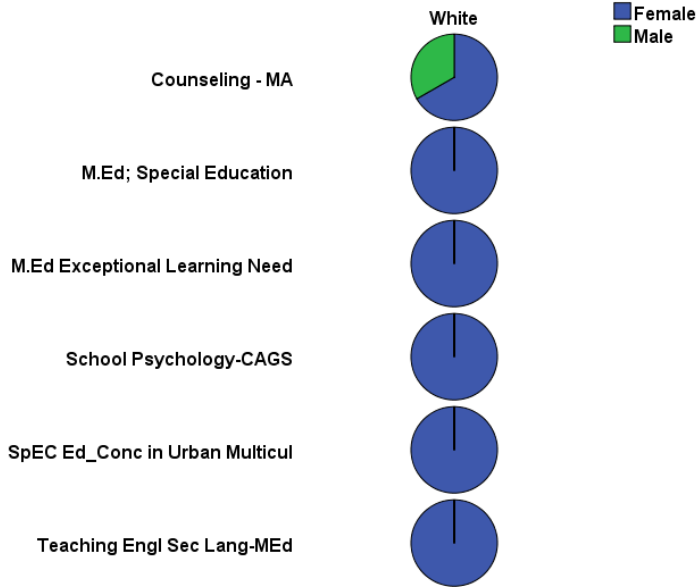
Gender * Ethnicity * Program * Term (Graph)



Gender * Ethnicity * Program * Term

Gender * Ethnicity * Program * Term										
Term	Program	Gender		Ethnicity					Total	
				American Indian	Asian	Black	Hispanic	Not Specified		White
Fall 2012	Counseling - MA	Gender	F						2	2
			M						1	1
		Total							3	3
	M.Ed Exceptional Learning Need	Gender	F						1	1
		Total							1	1
	M.Ed; Special Education	Gender	F						1	1
		Total							1	1
	School Psychology-CAGS	Gender	F						1	1
		Total							1	1
	SpEC Ed_Conc in Urban Multicul	Gender	F						2	2
		Total							2	2
	Teaching Engl Sec Lang-MEd	Gender	F						5	5
		Total							5	5
Total	Gender	F						12	12	
		M						1	1	
	Total							13	13	

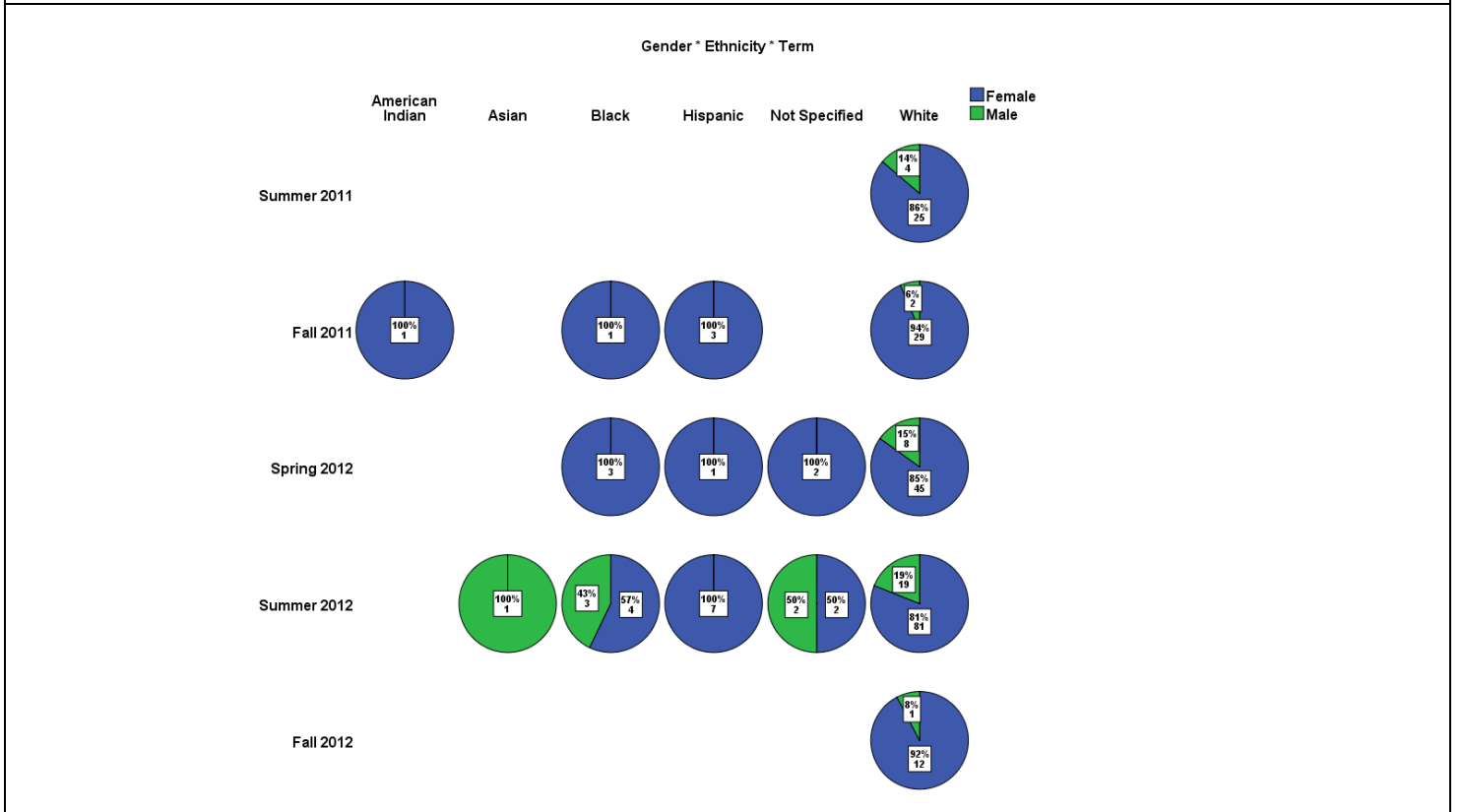
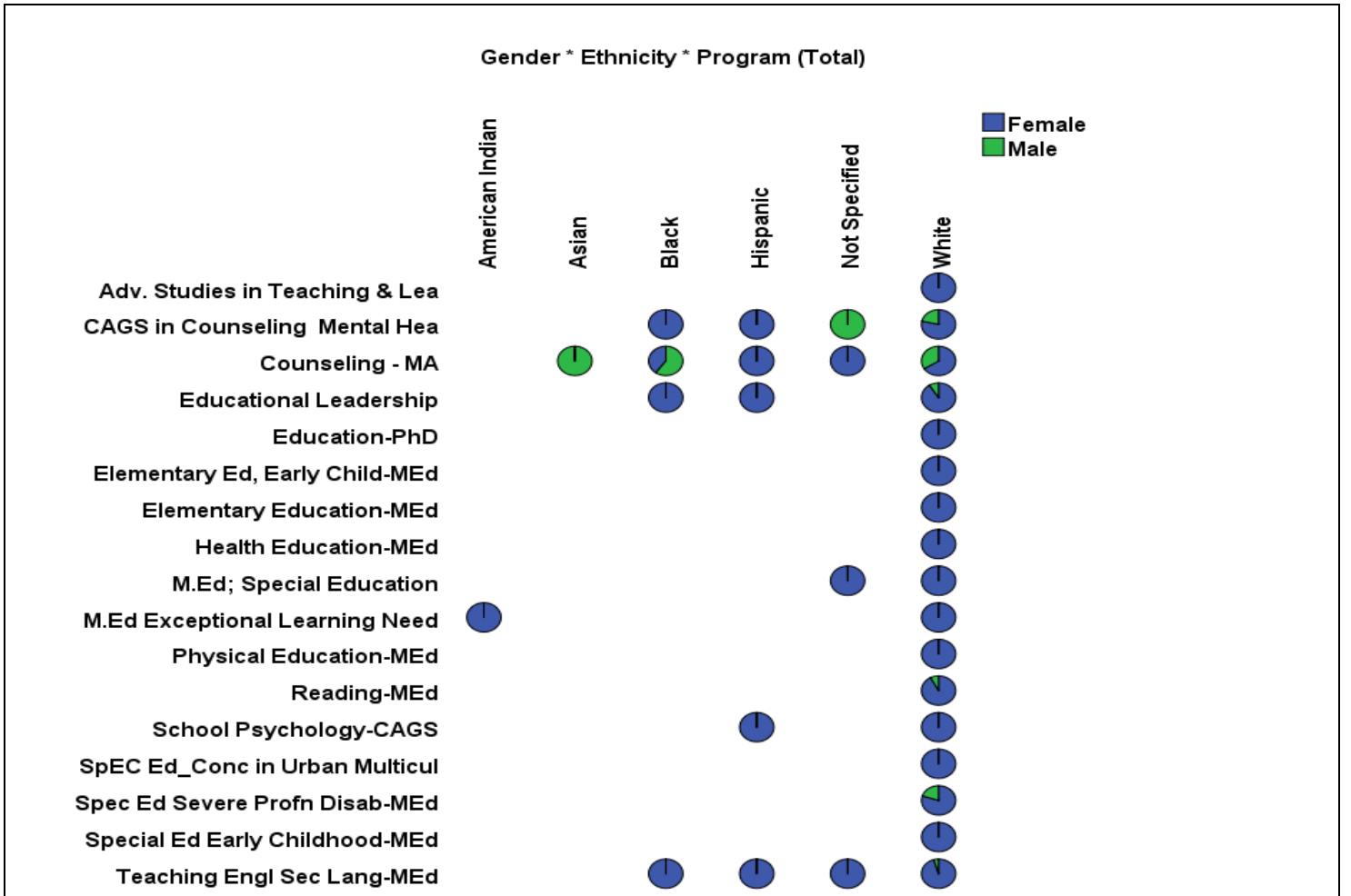
Fall 2012: Gender * Ethnicity * Program



Gender * Ethnicity * Program * Term

Gender * Ethnicity * Program * Term										
Term	Program			Ethnicity					Total	
				American Indian	Asian	Black	Hispanic	Not Specified		White
Total	Adv. Studies in Teaching & Lea	Gender	F						6	6
		Total							6	6
	CAGS in Counseling Mental Hea	Gender	F			4	5	0	44	53
			M			0	0	2	12	14
		Total			4	5	2	56	67	
	Counseling - MA	Gender	F		0	2	1	2	33	38
			M		1	3	0	0	17	21
		Total		1	5	1	2	50	59	
	Education-PhD	Gender	F						1	1
		Total							1	1
	Educational Leadership	Gender	F			1	1		10	12
			M			0	0		1	1
		Total			1	1		11	13	
	Elementary Ed, Early Child-MEd	Gender	F						2	2
		Total							2	2
	Elementary Education-MEd	Gender	F						4	4
		Total							4	4
	Health Education-MEd	Gender	F						5	5
		Total							5	5
	M.Ed Exceptional Learning Need	Gender	F	1					5	6
		Total		1					5	6
	M.Ed; Special Education	Gender	F					1	7	8
		Total					1	7	8	
	Physical Education-MEd	Gender	F						1	1
		Total							1	1
	Reading-MEd	Gender	F						12	12
			M						1	1
		Total						13	13	
	School Psychology-CAGS	Gender	F				1		9	10
		Total				1		9	10	
	Spec Ed Severe Profn Disab-MEd	Gender	F						4	4
			M						1	1
		Total						5	5	
	SpEC Ed_Conc in Urban Multicul	Gender	F						3	3
		Total							3	3
	Special Ed Early Childhood-MEd	Gender	F						4	4
		Total							4	4
	Teaching Engl Sec Lang-MEd	Gender	F			1	3	1	42	47
			M			0	0	0	2	2
		Total			1	3	1	44	49	
Total		Gender	F	1	0	8	11	4	192	216
			M	0	1	3	0	2	34	40
		Total		1	1	11	11	6	226	256

Gender * Ethnicity * Program * Term (Graph)

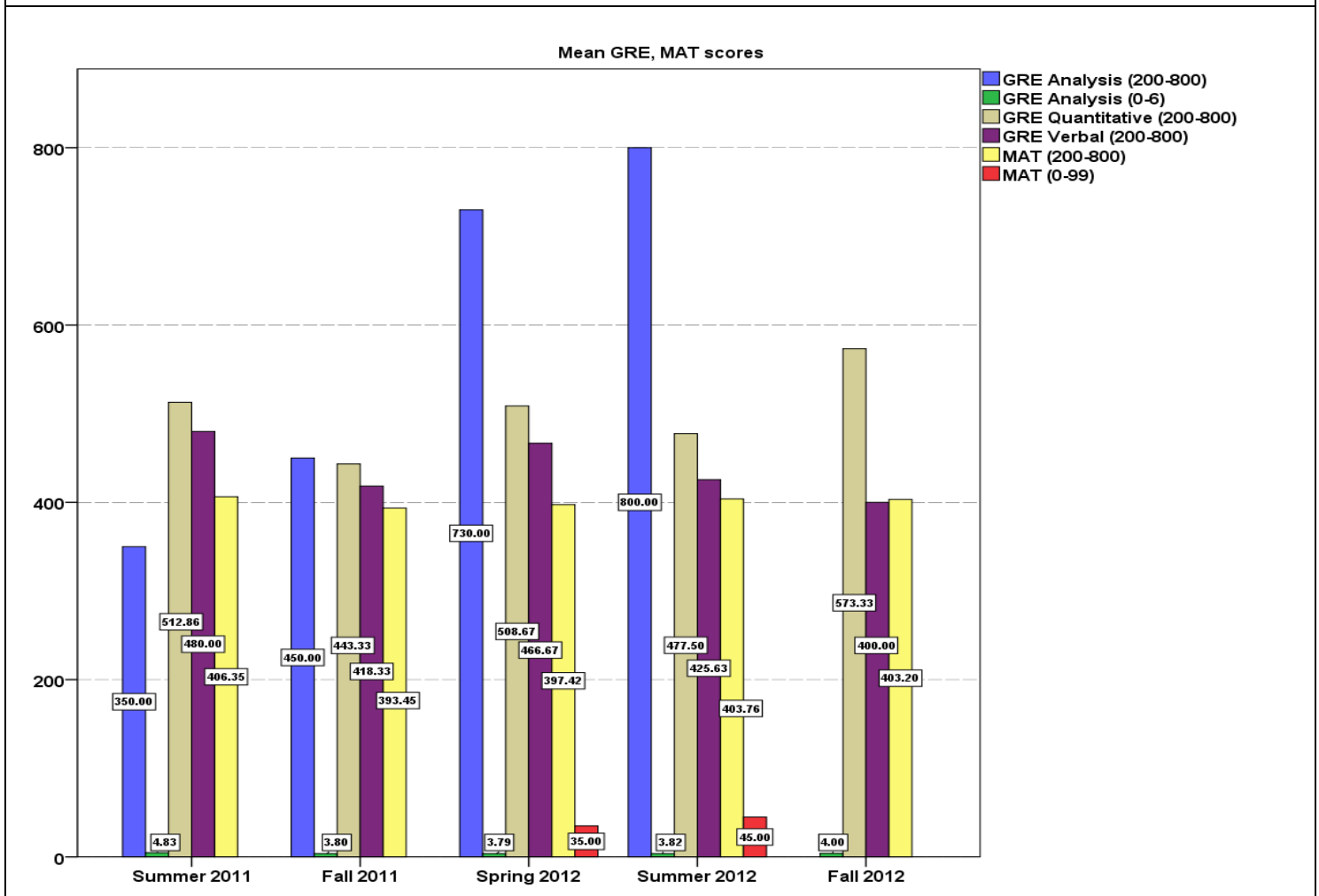


GRE Analysis (200-800), GRE Analysis (0-6), GRE Quantitative, GRE Verbal, MAT (200-800), MAT (0-99) * Term

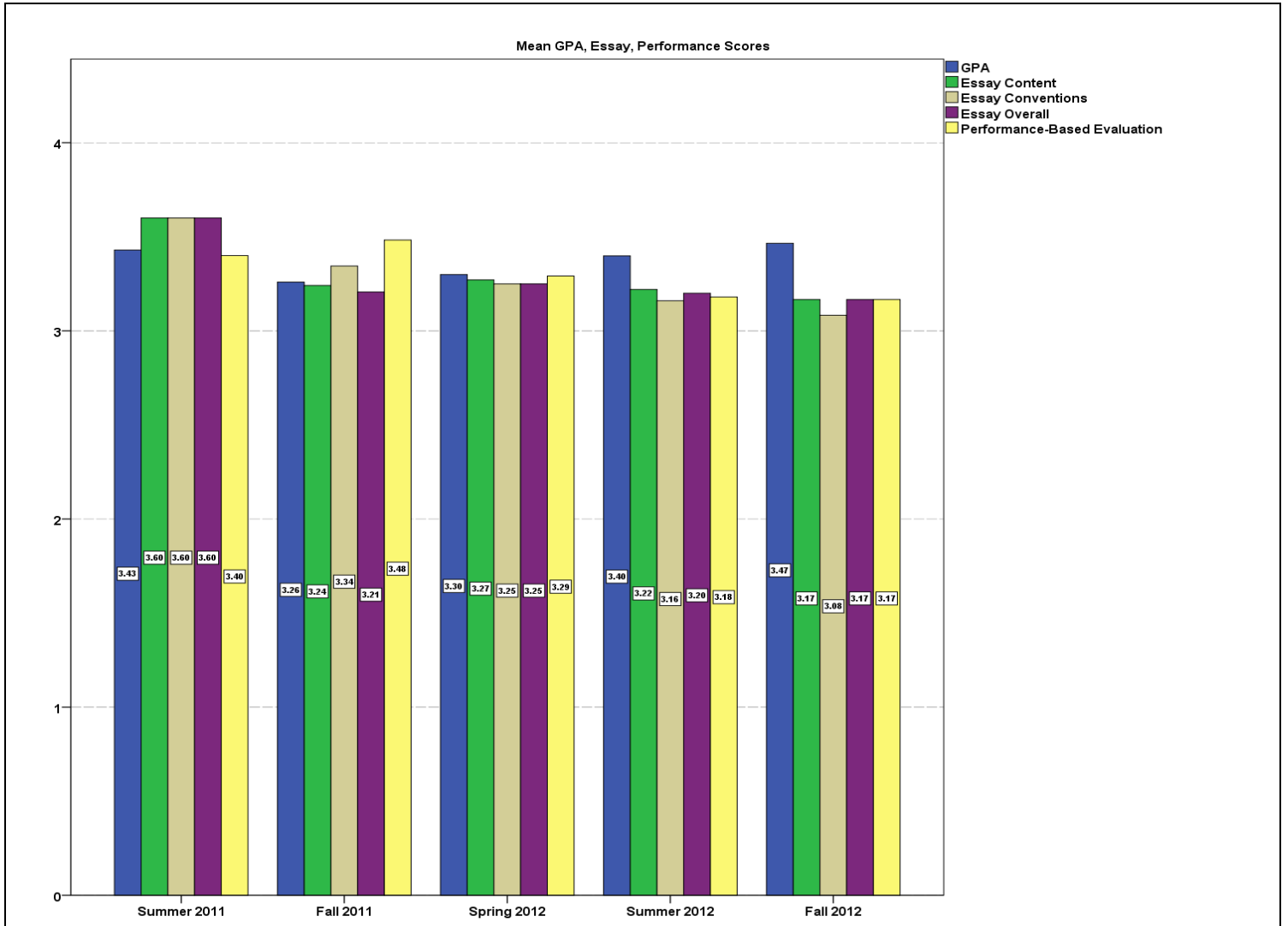
Term		GRE Analysis (200-800)	GRE Analysis (0-6)	GRE Quantitative (200-800)	GRE Verbal (200-800)	MAT (200-800)	MAT (0-99)	GPA	Essay Content	Essay Conventions	Essay Overall	Performance-Based Evaluation
Summer 2011	Mean	350.00	4.83	512.86	480.00	406.35		3.46	3.50	3.50	3.50	3.42
	Std. Deviation	.	0.61	141.03	92.01	27.83		0.46	0.51	0.51	0.51	0.50
	N	1	6	7	7	17		24	28	28	28	26
Fall 2011	Mean	450.00	3.80	443.33	418.33	393.45		3.25	3.28	3.33	3.20	3.50
	Std. Deviation	.	0.84	125.33	121.56	20.99		0.45	0.45	0.48	0.41	0.51
	N	1	5	6	6	20		30	36	36	35	36
Spring 2012	Mean	730.00	3.79	508.67	466.67	397.42	35.00	3.32	3.31	3.29	3.29	3.30
	Std. Deviation	0.00	0.40	89.19	86.33	19.93	.	0.47	0.46	0.46	0.46	0.46
	N	2	12	15	15	33	1	51	59	59	59	56
Summer 2012	Mean	800.00	3.82	477.50	425.63	403.76	45.00	3.40	3.24	3.18	3.21	3.19
	Std. Deviation	.	0.72	94.80	103.95	29.41	1.41	0.53	0.45	0.43	0.43	0.44
	N	1	41	32	32	50	2	104	118	118	118	116
Fall 2012	Mean		4.00	573.33	400.00	403.20		3.47	3.15	3.08	3.15	3.15
	Std. Deviation		0.35	150.11	17.32	27.27		0.32	0.38	0.28	0.38	0.38
	N		5	3	3	5		12	13	13	13	13
Total	Mean	612.00	3.91	490.16	439.52	400.77	41.67	3.37	3.28	3.26	3.26	3.28
	Std. Deviation	198.80	0.70	104.78	98.43	25.60	5.86	0.49	0.46	0.45	0.45	0.47
	N	5	69	63	63	125	3	221	254	254	253	247

* Rating: 1 – Unacceptable, 2 – Revise/Resubmit, 3 – Acceptable, 4 – Exemplary

** Rating: 1 – Unacceptable, 2 – Developing, 3 – Acceptable, 4 – Exemplary



**GPA, Professional Goals Essay: Content, Conventions, Overall; Performance-Based Evaluation *
Term (Graph)**



**GRE Analysis (200-800), GRE Analysis (0-6), GRE Quantitative, GRE Verbal, MAT (200-800), MAT (0-99), Professional Goals Essay: Content, Conventions, Overall, Performance-Based Evaluation),
GPA * Gender * Ethnicity * Term**

GRE, MAT, GPA, Essay, Performance Scores															
Term	Ethnicity	Gender		GRE Analysis (200-800)	GRE Analysis (0-6)	GRE Quantitative (200-800)	GRE Verbal (200-800)	MAT (200-800)	MAT (0-99)	GPA	Essay Content	Essay Conventions	Essay Overall	Performance-Based Evaluation	
Summer 2011	White	F	Mean	350.00	5.00	482.00	500.00	403.44		3.45	3.56	3.56	3.56	3.50	
			Std. Deviation	.	0.71	160.22	104.64	25.92		0.48	0.51	0.51	0.51	0.51	0.51
			N	1	4	5	5	16		22	25	25	25	25	22
		M	Mean		4.50	590.00	430.00	453.00		3.52	3.00	3.00	3.00	3.00	3.00
			Std. Deviation		0.00	0.00	0.00	.		0.00	0.00	0.00	0.00	0.00	0.00
			N		2	2	2	1		2	3	3	3	3	4
	Total	Mean	350.00	4.83	512.86	480.00	406.35		3.46	3.50	3.50	3.50	3.50	3.42	
		Std. Deviation	.	0.61	141.03	92.01	27.83		0.46	0.51	0.51	0.51	0.51	0.50	
		N	1	6	7	7	17		24	28	28	28	28	26	
	Total	F	Mean	350.00	5.00	482.00	500.00	403.44		3.45	3.56	3.56	3.56	3.50	
			Std. Deviation	.	0.71	160.22	104.64	25.92		0.48	0.51	0.51	0.51	0.51	0.51
			N	1	4	5	5	16		22	25	25	25	25	22
M		Mean		4.50	590.00	430.00	453.00		3.52	3.00	3.00	3.00	3.00	3.00	
		Std. Deviation		0.00	0.00	0.00	.		0.00	0.00	0.00	0.00	0.00	0.00	
		N		2	2	2	1		2	3	3	3	3	4	
Total	Mean	350.00	4.83	512.86	480.00	406.35		3.46	3.50	3.50	3.50	3.50	3.42		
	Std. Deviation	.	0.61	141.03	92.01	27.83		0.46	0.51	0.51	0.51	0.51	0.50		
	N	1	6	7	7	17		24	28	28	28	28	26		
GRE, MAT, GPA, Essay, Performance Scores															
Term	Ethnicity	Gender		GRE Analysis (200-800)	GRE Analysis (0-6)	GRE Quantitative (200-800)	GRE Verbal (200-800)	MAT (200-800)	MAT (0-99)	GPA	Essay Content	Essay Conventions	Essay Overall	Performance-Based Evaluation	
Fall 2011	American Indian	F	Mean					367.00		3.08900	3.00	3.00	3.00	3.00	
			Std. Deviation					
			N					1		1	1	1	1	1	
	Total	Mean					367.00		3.09		3.00	3.00	3.00	3.00	
		Std. Deviation					
		N					1		1		1	1	1	1	
	Black	F	Mean		2.50	350.00	230.00					3.00	3.00	3.00	4.00
			Std. Deviation	
			N		1	1	1					1	1	1	1
	Total	Mean		2.50	350.00	230.00						3.00	3.00	3.00	4.00
		Std. Deviation		
		N		1	1	1					1	1	1	1	
	Hispanic	F	Mean						378.33		3.29	3.33	3.33	3.33	3.67
			Std. Deviation						11.59		0.53	0.58	0.58	0.58	0.58
			N						3		3	3	3	3	3
	Total	Mean							378.33		3.29	3.33	3.33	3.33	3.67
		Std. Deviation							11.59		0.53	0.58	0.58	0.58	0.58
		N							3		3	3	3	3	
	White	F	Mean	450.00	4.00	412.50	430.00	395.47			3.23	3.28	3.34	3.18	3.48
			Std. Deviation	.	0.50	79.74	77.03	18.77			0.47	0.45	0.48	0.39	0.51
			N	1	3	4	4	15			24	29	29	28	29
		M	Mean		4.50	660.00	560.00	435.00			3.55	3.50	3.50	3.50	3.50
			Std. Deviation				0.11	0.71	0.71	0.71	0.71
			N		1	1	1	1			2	2	2	2	2
Total	Mean	450.00	4.13	462.00	456.00	397.94			3.26	3.29	3.35	3.20	3.48		
	Std. Deviation	.	0.48	130.46	88.49	20.65			0.46	0.46	0.49	0.41	0.51		
	N	1	4	5	5	16			26	31	31	30	31		
Total	F	Mean	450.00	3.63	400.00	390.00	391.26			3.23	3.26	3.32	3.18	3.50	
		Std. Deviation	.	0.85	74.50	111.58	19.09			0.46	0.45	0.47	0.39	0.51	
		N	1	4	5	5	19			28	34	34	33	34	
	M	Mean		4.50	660.00	560.00	435.00			3.55	3.50	3.50	3.50	3.50	
		Std. Deviation				0.11	0.71	0.71	0.71	0.71	
		N		1	1	1	1			2	2	2	2	2	
Total	Mean	450.00	3.80	443.33	418.33	393.45			3.25	3.28	3.33	3.20	3.50		
	Std. Deviation	.	0.84	125.33	121.56	20.99			0.45	0.45	0.48	0.41	0.51		
	N	1	5	6	6	20			30	36	36	35	36		

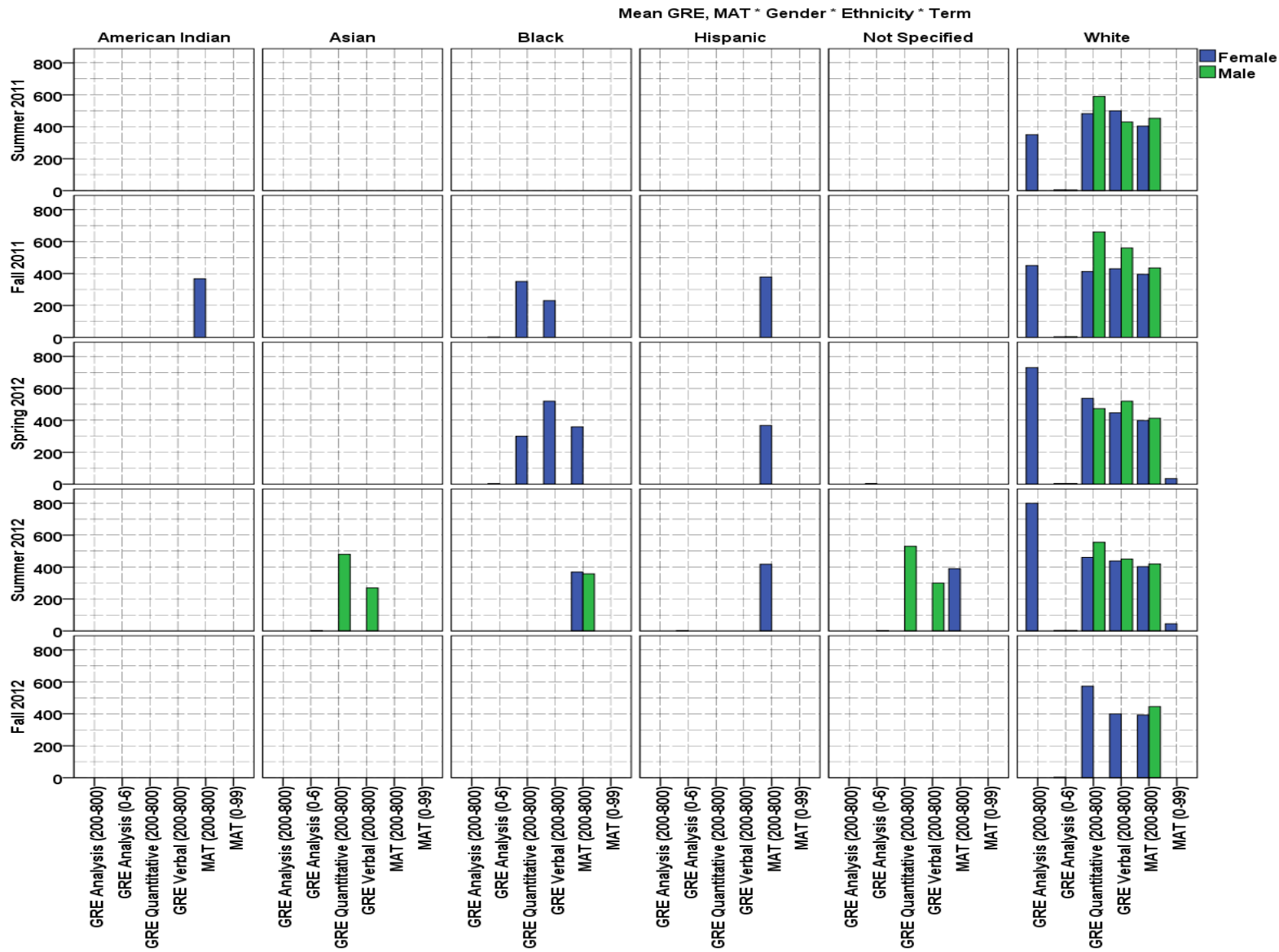
Term		GRE, MAT, GPA, Essay, Performance Scores												
Ethnicity	Gender		GRE Analysis (200-800)	GRE Analysis (0-6)	GRE Quantitative (200-800)	GRE Verbal (200-800)	MAT (200-800)	MAT (0-99)	GPA	Essay Content	Essay Conventions	Essay Overall	Performance-Based Evaluation	
Spring 2012	Black	F	Mean		3.50	300.00	520.00	359.00	3.27	3.33	3.00	3.00	3.33	
			Std. Deviation					4.24	0.30	0.58	0.00	0.00	0.58	
			N		1	1	1	2	3	3	3	3	3	
	Total	Mean		3.50	300.00	520.00	359.00	3.27	3.33	3.00	3.00	3.00	3.33	
		Std. Deviation					4.24	0.30	0.58	0.00	0.00	0.00	0.58	
		N		1	1	1	2	3	3	3	3	3		
	Hispanic	F	Mean					368.00	2.49	3.00	3.00	3.00	4.00	
			Std. Deviation											
			N					1	1	1	1	1	1	
	Total	Mean					368.00	2.49	3.00	3.00	3.00	3.00	4.00	
		Std. Deviation												
		N					1	1	1	1	1	1		
	Not Specified	F	Mean		4.00					3.45	3.50	3.50	3.50	3.00
			Std. Deviation							0.71	0.71	0.71	0.00	
			N		1					1	2	2	2	
	Total	Mean		4.00						3.45	3.50	3.50	3.50	3.00
		Std. Deviation								0.71	0.71	0.71	0.00	
		N		1						1	2	2	2	
	White	F	Mean	730.00	3.64	537.27	447.27	398.48	35.00	3.35	3.33	3.33	3.33	3.33
			Std. Deviation	0.00	0.38	71.98	94.24	17.40		0.46	0.48	0.48	0.48	0.48
			N	2	7	11	11	25	1	38	45	45	45	42
M		Mean		4.17	473.33	520.00	413.40		3.32	3.13	3.13	3.13	3.13	
		Std. Deviation		0.29	40.41	0.00	8.76		0.54	0.35	0.35	0.35	0.35	
		N		3	3	3	5		8	8	8	8		
Total		Mean	730.00	3.80	523.57	462.86	400.97	35.00	3.34	3.30	3.30	3.30	3.30	
		Std. Deviation	0.00	0.42	70.56	88.27	17.12		0.47	0.46	0.46	0.46	0.46	
		N	2	10	14	14	30	1	46	53	53	53	50	
Total	F	Mean	730.00	3.67	517.50	453.33	394.57	35.00	3.33	3.33	3.31	3.31	3.33	
		Std. Deviation	0.00	0.35	96.97	92.28	20.10		0.46	0.48	0.47	0.47	0.48	
		N	2	9	12	12	28	1	43	51	51	51	48	
	M	Mean		4.17	473.33	520.00	413.40		3.32	3.13	3.13	3.13	3.13	
		Std. Deviation		0.29	40.41	0.00	8.76		0.54	0.35	0.35	0.35	0.35	
		N		3	3	3	5		8	8	8	8		
Total	Mean	730.00	3.79	508.67	466.67	397.42	35.00	3.32	3.31	3.29	3.29	3.30		
	Std. Deviation	0.00	0.40	89.19	86.33	19.93		0.47	0.46	0.46	0.46	0.46		
	N	2	12	15	15	33	1	51	59	59	59	56		

Term		GRE, MAT, GPA, Essay, Performance Scores												
Ethnicity	Gender		GRE Analysis (200-800)	GRE Analysis (0-6)	GRE Quantitative (200-800)	GRE Verbal (200-800)	MAT (200-800)	MAT (0-99)	GPA	Essay Content	Essay Conventions	Essay Overall	Performance-Based Evaluation	
Summer 2012	Asian	M	Mean		2.00	480.00	270.00				3.00	3.00	3.00	3.00
			Std. Deviation											
			N		1	1	1					1	1	1
	Total	Mean		2.00	480.00	270.00					3.00	3.00	3.00	3.00
		Std. Deviation												
		N		1	1	1					1	1	1	1
	Black	F	Mean					369.00		3.35	3.25	3.25	3.25	3.50
			Std. Deviation					0.00		0.02	0.50	0.50	0.50	0.58
			N					2		4	4	4	4	4
		M	Mean					358.00		2.59	3.00	3.00	3.00	3.00
			Std. Deviation					0.00		0.46	0.00	0.00	0.00	0.00
			N					2		3	3	3	3	3
	Total	Mean					363.50		3.02	3.14	3.14	3.14	3.29	
		Std. Deviation					6.35		0.48	0.38	0.38	0.38	0.49	
		N					4		7	7	7	7	7	
	Hispanic	F	Mean		3.00			418.40		3.25	3.29	3.29	3.29	3.00
			Std. Deviation		0.71			74.49		0.57	0.49	0.49	0.49	0.00
			N		2			5		7	7	7	7	7
	Total	Mean		3.00			418.40		3.25	3.29	3.29	3.29	3.00	
		Std. Deviation		0.71			74.49		0.57	0.49	0.49	0.49	0.00	
		N		2			5		7	7	7	7	7	
Not Specified	F	Mean					390.00		3.35	3.50	3.00	3.50	3.00	
		Std. Deviation					4.24		0.05	0.71	0.00	0.71	0.00	
		N					2		2	2	2	2	2	
	M	Mean		3.00	530.00	300.00			3.76	3.00	3.00	3.00	4.00	
		Std. Deviation		0.00	0.00	0.00			0.00	0.00	0.00	0.00	0.00	
		N		2	2	2			2	2	2	2	2	
Total	Mean		3.00	530.00	300.00	390.00		3.55	3.25	3.00	3.25	3.50		
	Std. Deviation		0.00	0.00	0.00	4.24		0.24	0.50	0.00	0.50	0.58		
	N		2	2	2	2		4	4	4	4	4		
White	F	Mean	800.00	3.98	460.80	438.00	402.87	45.00	3.51	3.21	3.15	3.18	3.23	
		Std. Deviation		0.66	99.41	106.58	16.03	1.41	0.43	0.44	0.42	0.41	0.48	
		N	1	31	25	25	30	2	70	80	80	80	79	
	M	Mean		3.80	555.00	450.00	419.56		3.09	3.37	3.32	3.37	3.00	
		Std. Deviation		0.27	40.41	11.55	17.26		0.76	0.50	0.48	0.50	0.00	
		N		5	4	4	9		16	19	19	19	18	
	Total	Mean	800.00	3.96	473.79	439.66	406.72	45.00	3.44	3.24	3.18	3.21	3.19	
		Std. Deviation		0.63	98.68	98.83	17.59	1.41	0.53	0.45	0.44	0.44	0.44	
		N	1	36	29	29	39	2	86	99	99	99	97	
Total	F	Mean	800.00	3.92	460.80	438.00	402.46	45.00	3.48	3.23	3.16	3.19	3.22	
		Std. Deviation		0.70	99.41	106.58	29.69	1.41	0.43	0.45	0.42	0.42	0.46	
		N	1	33	25	25	39	2	83	93	93	93		
	M	Mean		3.38	537.14	381.43	408.36		3.08	3.28	3.24	3.28	3.08	
		Std. Deviation		0.69	39.88	86.49	29.30		0.73	0.46	0.44	0.46	0.28	
		N		8	7	7	11		21	25	25	25	24	
Total	Mean	800.00	3.82	477.50	425.63	403.76	45.00	3.40	3.24	3.18	3.21	3.19		
	Std. Deviation		0.72	94.80	103.95	29.41	1.41	0.53	0.45	0.43	0.43	0.44		
	N	1	41	32	32	50	2	104	118	118	118	116		

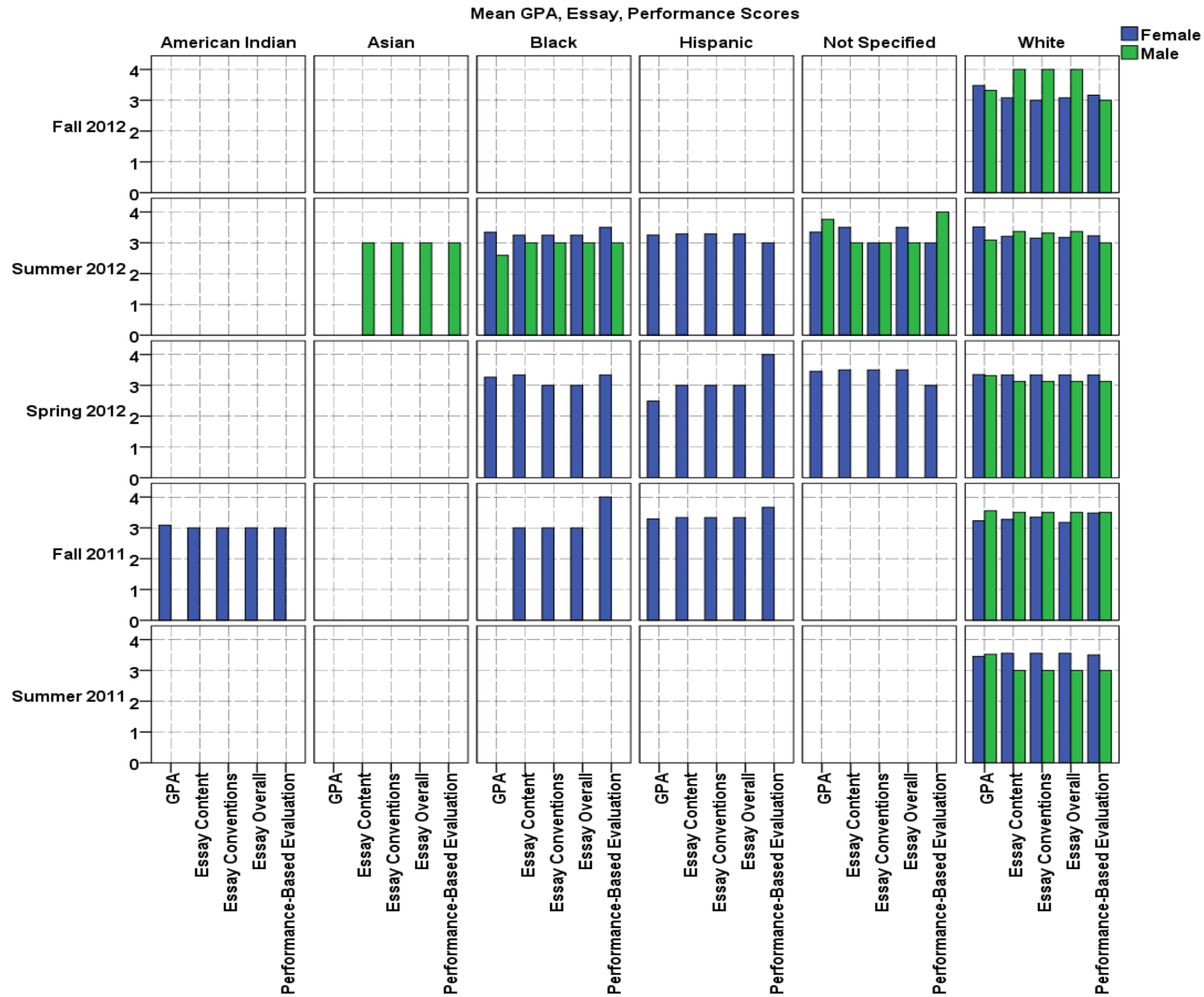
GRE, MAT, GPA, Essay, Performance Scores														
Term	Ethnicity	Gender	GRE Analysis (200-800)	GRE Analysis (0-6)	GRE Quantitative (200-800)	GRE Verbal (200-800)	MAT (200-800)	MAT (0-99)	GPA	Essay Content	Essay Conventions	Essay Overall	Performance-Based Evaluation	
Fall 2012	White	F	Mean	4.00	573.33	400.00	392.50		3.48	3.08	3.00	3.08	3.17	
			Std. Deviation	0.35	150.11	17.32	15.11		0.34	0.29	0.00	0.29	0.39	
			N	5	3	3	4		11	12	12	12	12	
		M	Mean				446.00		3.32	4.00	4.00	4.00	4.00	3.00
			Std. Deviation											
			N				1		1	1	1	1	1	1
	Total	Mean	4.00	573.33	400.00	403.20		3.47	3.15	3.08	3.15	3.15	3.15	
		Std. Deviation	0.35	150.11	17.32	27.27		0.32	0.38	0.28	0.38	0.38	0.38	
		N	5	3	3	5		12	13	13	13	13	13	
	Total	F	Mean	4.00	573.33	400.00	392.50		3.48	3.08	3.00	3.08	3.17	
			Std. Deviation	0.35	150.11	17.32	15.11		0.34	0.29	0.00	0.29	0.39	
			N	5	3	3	4		11	12	12	12	12	
M		Mean				446.00		3.32	4.00	4.00	4.00	3.00		
		Std. Deviation												
		N				1		1	1	1	1	1		
Total	Mean	4.00	573.33	400.00	403.20		3.47	3.15	3.08	3.15	3.15			
	Std. Deviation	0.35	150.11	17.32	27.27		0.32	0.38	0.28	0.38	0.38			
	N	5	3	3	5		12	13	13	13	13			

GRE, MAT, GPA, Essay, Performance Scores														
Term	Ethnicity	Gender	GRE Analysis (200-800)	GRE Analysis (0-6)	GRE Quantitative (200-800)	GRE Verbal (200-800)	MAT (200-800)	MAT (0-99)	GPA	Essay Content	Essay Conventions	Essay Overall	Performance-Based Evaluation	
Fall 2012	White	F	Mean	4.00	573.33	400.00	392.50		3.48	3.08	3.00	3.08	3.17	
			Std. Deviation	0.35	150.11	17.32	15.11		0.34	0.29	0.00	0.29	0.39	
			N	5	3	3	4		11	12	12	12	12	
		M	Mean				446.00		3.32	4.00	4.00	4.00	3.00	
			Std. Deviation											
			N				1		1	1	1	1	1	
	Total	Mean	4.00	573.33	400.00	403.20		3.47	3.15	3.08	3.15	3.15		
		Std. Deviation	0.35	150.11	17.32	27.27		0.32	0.38	0.28	0.38	0.38		
		N	5	3	3	5		12	13	13	13	13		
	Total	F	Mean	4.00	573.33	400.00	392.50		3.48	3.08	3.00	3.08	3.17	
			Std. Deviation	0.35	150.11	17.32	15.11		0.34	0.29	0.00	0.29	0.39	
			N	5	3	3	4		11	12	12	12	12	
M		Mean				446.00		3.32	4.00	4.00	4.00	3.00		
		Std. Deviation												
		N				1		1	1	1	1	1		
Total	Mean	4.00	573.33	400.00	403.20		3.47	3.15	3.08	3.15	3.15			
	Std. Deviation	0.35	150.11	17.32	27.27		0.32	0.38	0.28	0.38	0.38			
	N	5	3	3	5		12	13	13	13	13			
Total	American Indian	F	Mean				367.00		3.09	3.00	3.00	3.00	3.00	
			Std. Deviation											
			N				1		1	1	1	1		
	Total	Mean				367.00		3.09	3.00	3.00	3.00	3.00		
		Std. Deviation												
		N				1		1	1	1	1			
	Asian	M	Mean	2.00	480.00	270.00					3.00	3.00	3.00	3.00
			Std. Deviation											
			N	1	1	1					1	1	1	
	Total	Mean	2.00	480.00	270.00					3.00	3.00	3.00	3.00	
		Std. Deviation												
		N	1	1	1					1	1	1		
Black	F	Mean	3.00	325.00	375.00	364.00		3.31	3.25	3.13	3.13	3.50		
		Std. Deviation	0.71	35.36	205.06	6.27		0.18	0.46	0.35	0.35	0.53		
		N	2	2	2	4		7	8	8	8	8		
	M	Mean				358.00		2.59	3.00	3.00	3.00	3.00		
		Std. Deviation				0.00		0.46	0.00	0.00	0.00	0.00		
		N				2		3	3	3	3			
Total	Mean	3.00	325.00	375.00	362.00		3.10	3.18	3.09	3.09	3.36			
	Std. Deviation	0.71	35.36	205.06	5.76		0.43	0.40	0.30	0.30	0.50			
	N	2	2	2	6		10	11	11	11				
Hispanic	F	Mean	3.00			399.44		3.19	3.27	3.27	3.27	3.27		
		Std. Deviation	0.71			57.65		0.55	0.47	0.47	0.47			
		N	2			9		11	11	11	11			
Total	Mean	3.00			399.44		3.19	3.27	3.27	3.27	3.27			
	Std. Deviation	0.71			57.65		0.55	0.47	0.47	0.47				
	N	2			9		11	11	11	11				
Not Specified	F	Mean	4.00			390.00		3.38	3.50	3.25	3.50	3.00		
		Std. Deviation				4.24		0.07	0.58	0.50	0.58			
		N	1			2		3	4	4	4			
	M	Mean	3.00	530.00	300.00			3.76	3.00	3.00	3.00	4.00		
		Std. Deviation	0.00	0.00	0.00			0.00	0.00	0.00	0.00			
		N	2	2	2			2	2	2	2			
Total	Mean	3.33	530.00	300.00	390.00		3.53	3.33	3.17	3.33	3.33			
	Std. Deviation	0.58	0.00	0.00	4.24		0.21	0.52	0.41	0.52				
	N	3	2	2	2		5	6	6	6				
White	F	Mean	612.00	4.02	483.54	443.54	400.06	41.67	3.42	3.29	3.27	3.26	3.32	
		Std. Deviation	198.80	0.66	107.67	97.51	18.80	5.86	0.45	0.47	0.47	0.45	0.49	
		N	5	50	48	48	90	3	165	191	191	190	184	
	M	Mean	4.09	548.00	478.00	422.18		3.22	3.30	3.27	3.30	3.06		
		Std. Deviation	0.38	67.63	47.33	17.35		0.64	0.47	0.45	0.47	0.24		
		N	11	10	10	17		29	33	33	33	33		
Total	Mean	612.00	4.03	494.66	449.48	403.57	41.67	3.39	3.29	3.27	3.26	3.28		
	Std. Deviation	199	1	104	91	20	6	0	0	0	0			
	N	5	61	58	58	107	3	194	224	224	223	217		
Total	F	Mean	612.00	3.95	477.20	440.80	398.14	41.67	3.40	3.29	3.26	3.26	3.32	
		Std. Deviation	198.80	0.70	110.14	100.81	24.74	5.86	0.45	0.46	0.45	0.45		
		N	5	55	50	50	106	3	187	215	215	214	208	
	M	Mean	3.79	540.00	434.62	415.42		3.20	3.26	3.23	3.26	3.10		
		Std. Deviation	0.73	61.64	92.34	26.02		0.64	0.44	0.43	0.44	0.31		
		N	14	13	13	19		34	39	39	39	39		
Total	Mean	612.00	3.91	490.16	439.52	400.77	41.67	3.37	3.28	3.26	3.26	3.28		
	Std. Deviation	198.80	0.70	104.78	98.43	25.60	5.86	0.49	0.46	0.45	0.45			
	N	5	69	63	63	125	3	221	254	254	253	247		

GRE Analysis (200-800), GRE Analysis (0-6), GRE Quantitative, GRE Verbal, MAT (200-800), MAT (0-99) * GENDER * ETHNICITY * Term (Graph)



GPA, Professional Goals Essay: Content, Conventions, Overall, Performance-Based Evaluation * Gender * Ethnicity * Term (Graph)



Candidate Reference Form Scores * Term

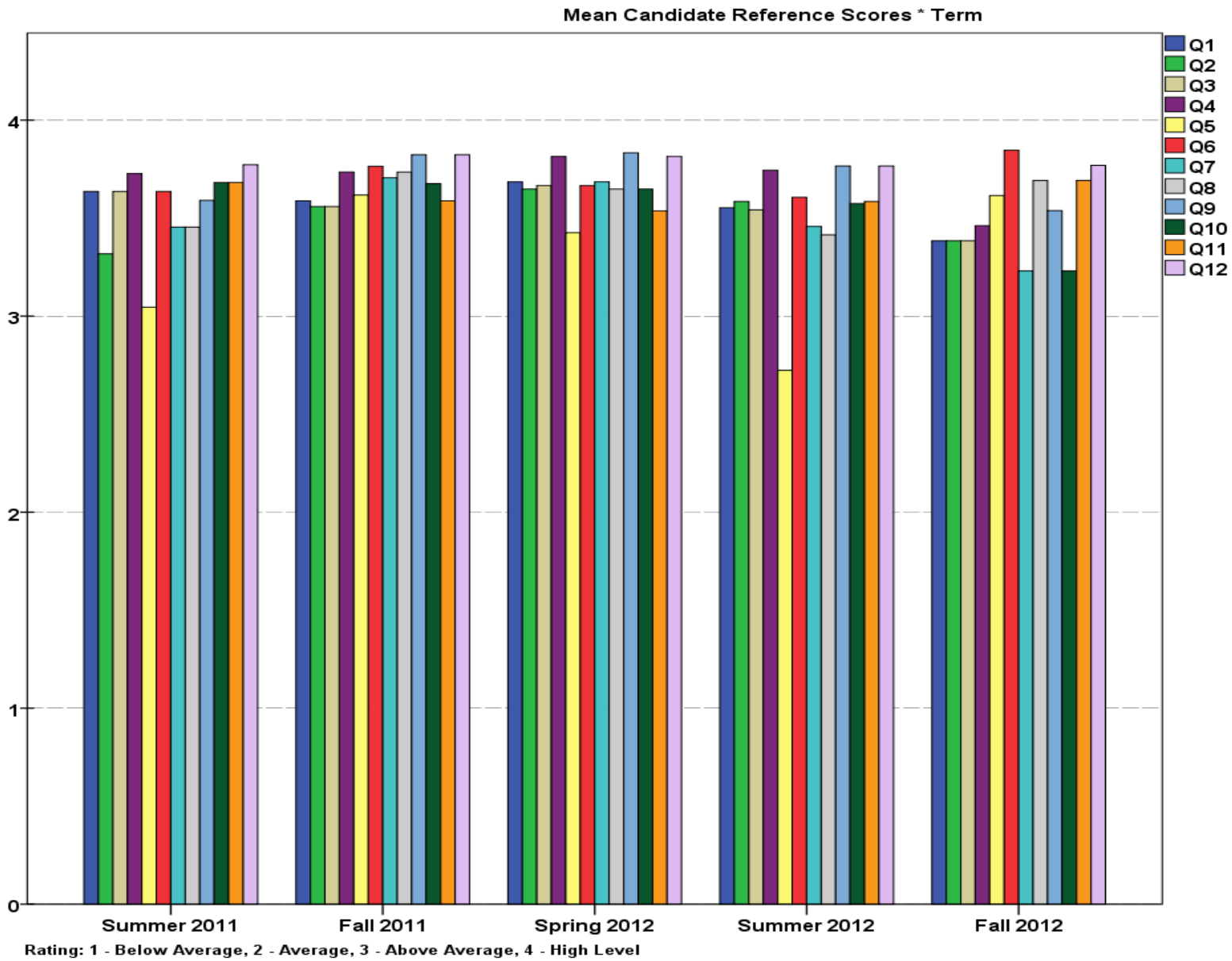
CANDIDATE REFERENCE FORM

Please evaluate the following attributes of the candidate on a four-point scale as indicated:
 1 = below average; 2 = average; 3 = above average; 4 = high level;
 or use NA for not able to judge.

Q1. Capacity for insight	1	2	3	4
Q2. Clarity of goals	1	2	3	4
Q3. Intellectual curiosity	1	2	3	4
Q4. Motivation and initiative	1	2	3	4
Q5. Rapport with children and youth	1	2	3	4
Q6. Rapport with adults	1	2	3	4
Q7. Emotional stability	1	2	3	4
Q8. Adaptability to change	1	2	3	4
Q9. Reliability and dependability	1	2	3	4
Q10. Ability to organize ideas or tasks	1	2	3	4
Q11. Oral and written communication skills	1	2	3	4
Q12. Overall potential	1	2	3	4

Candidate Reference (Q1-Q12) * Term													
Term		Q1	Q2	Q3	Q4	Q5	Q6	Q7	Q8	Q9	Q10	Q11	Q12
Summer 2011	Mean	3.63	3.29	3.67	3.75	2.92	3.58	3.42	3.43	3.61	3.63	3.67	3.75
	Std. Deviation	0.49	0.91	0.48	0.53	1.74	0.97	1.18	0.99	0.94	0.65	0.48	0.53
	N	24	24	24	24	24	24	24	23	23	24	24	24
Fall 2011	Mean	3.56	3.53	3.58	3.72	3.60	3.78	3.69	3.75	3.81	3.67	3.58	3.83
	Std. Deviation	0.56	0.56	0.60	0.57	0.81	0.48	0.58	0.55	0.47	0.48	0.55	0.38
	N	36	36	36	36	35	36	36	36	36	36	36	35
Spring 2012	Mean	3.69	3.65	3.67	3.81	3.43	3.67	3.69	3.65	3.83	3.65	3.54	3.81
	Std. Deviation	0.51	0.70	0.70	0.39	1.27	0.51	0.84	0.85	0.42	0.52	0.75	0.44
	N	54	54	54	54	54	54	54	54	54	54	54	54
Summer 2012	Mean	3.56	3.61	3.56	3.76	2.71	3.62	3.47	3.39	3.78	3.59	3.59	3.77
	Std. Deviation	0.73	0.68	0.64	0.54	1.75	0.58	1.03	1.10	0.53	0.69	0.64	0.51
	N	99	99	99	98	99	99	99	99	99	97	99	97
Fall 2012	Mean	3.38	3.38	3.38	3.46	3.62	3.85	3.23	3.69	3.54	3.23	3.69	3.77
	Std. Deviation	0.77	0.65	0.77	0.66	0.51	0.38	1.17	0.48	0.66	1.17	0.63	0.44
	N	13	13	13	13	13	13	13	13	13	13	13	13
Total	Mean	3.58	3.56	3.59	3.75	3.09	3.66	3.54	3.53	3.76	3.60	3.59	3.79
	Std. Deviation	0.64	0.70	0.64	0.52	1.52	0.60	0.96	0.94	0.56	0.66	0.64	0.47
	N	226	226	226	225	225	226	226	225	225	224	226	223

Candidate Reference Form scores * Term (Graph)



Candidate Reference Form (Q1-12) Scores * Gender * Ethnicity * Term

Candidate Reference Scores * Gender * Ethnicity * Term															
Term	Ethnicity	Gender	Q1	Q2	Q3	Q4	Q5	Q6	Q7	Q8	Q9	Q10	Q11	Q12	
Summer 2011	White	F	Mean	3.62	3.29	3.71	3.86	3.14	3.62	3.57	3.52	3.70	3.71	3.86	
			Std. Deviation	0.50	0.96	0.46	0.36	1.59	0.97	0.98	0.98	0.92	0.56	0.46	0.36
			N	21	21	21	21	21	21	21	21	21	20	21	21
		M	Mean	3.67	3.33	3.33	3.00	1.33	3.33	2.33	2.50	3.00	3.00	3.33	3.00
			Std. Deviation	0.58	0.58	0.58	1.00	2.31	1.15	2.08	0.71	1.00	1.00	0.58	1.00
			N	3	3	3	3	3	3	3	2	3	3	3	3
		Total	Mean	3.63	3.29	3.67	3.75	2.92	3.58	3.42	3.43	3.61	3.63	3.67	3.75
			Std. Deviation	0.49	0.91	0.48	0.53	1.74	0.97	1.18	0.99	0.94	0.65	0.48	0.53
			N	24	24	24	24	24	24	24	23	23	24	24	24
	Total	F	Mean	3.62	3.29	3.71	3.86	3.14	3.62	3.57	3.52	3.70	3.71	3.71	3.86
			Std. Deviation	0.50	0.96	0.46	0.36	1.59	0.97	0.98	0.98	0.92	0.56	0.46	0.36
			N	21	21	21	21	21	21	21	21	20	21	21	21
		M	Mean	3.67	3.33	3.33	3.00	1.33	3.33	2.33	2.50	3.00	3.00	3.33	3.00
			Std. Deviation	0.58	0.58	0.58	1.00	2.31	1.15	2.08	0.71	1.00	1.00	0.58	1.00
			N	3	3	3	3	3	3	3	2	3	3	3	3
		Total	Mean	3.63	3.29	3.67	3.75	2.92	3.58	3.42	3.43	3.61	3.63	3.67	3.75
			Std. Deviation	0.49	0.91	0.48	0.53	1.74	0.97	1.18	0.99	0.94	0.65	0.48	0.53
			N	24	24	24	24	24	24	24	23	23	24	24	24
Fall 2011	American Indian	F	Mean	4.00	4.00	4.00	4.00	4.00	4.00	4.00	4.00	4.00	4.00	4.00	
			Std. Deviation
			N	1	1	1	1	1	1	1	1	1	1	1	1
		Total	Mean	4.00	4.00	4.00	4.00	4.00	4.00	4.00	4.00	4.00	4.00	4.00	4.00
			Std. Deviation
			N	1	1	1	1	1	1	1	1	1	1	1	1
	Black	F	Mean	3.00	4.00	4.00	3.00	4.00	4.00	4.00	4.00	4.00	3.00	3.00	4.00
			Std. Deviation
			N	1	1	1	1	1	1	1	1	1	1	1	1
		Total	Mean	3.00	4.00	4.00	3.00	4.00	4.00	4.00	4.00	4.00	3.00	3.00	4.00
			Std. Deviation
			N	1	1	1	1	1	1	1	1	1	1	1	1
	Hispanic	F	Mean	3.33	3.33	4.00	3.67	3.67	3.67	3.33	3.67	3.67	3.67	3.33	4.00
			Std. Deviation	0.58	0.58	0.00	0.58	0.58	0.58	0.58	0.58	0.58	0.58	0.58	0.00
			N	3	3	3	3	3	3	3	3	3	3	3	2
		Total	Mean	3.33	3.33	4.00	3.67	3.67	3.67	3.33	3.67	3.67	3.67	3.33	4.00
			Std. Deviation	0.58	0.58	0.00	0.58	0.58	0.58	0.58	0.58	0.58	0.58	0.58	0.00
			N	3	3	3	3	3	3	3	3	3	3	3	2
White	F	Mean	3.59	3.52	3.52	3.72	3.68	3.76	3.69	3.72	3.79	3.66	3.59	3.79	
		Std. Deviation	0.57	0.57	0.63	0.59	0.55	0.51	0.60	0.59	0.49	0.48	0.57	0.41	
		N	29	29	29	29	28	29	29	29	29	29	29	29	
	M	Mean	3.50	3.50	3.50	4.00	2.00	4.00	4.00	4.00	4.00	4.00	4.00	4.00	
		Std. Deviation	0.71	0.71	0.71	0.00	2.83	0.00	0.00	0.00	0.00	0.00	0.00	0.00	
		N	2	2	2	2	2	2	2	2	2	2	2	2	
	Total	Mean	3.58	3.52	3.52	3.74	3.57	3.77	3.71	3.74	3.81	3.68	3.61	3.81	
		Std. Deviation	0.56	0.57	0.63	0.58	0.86	0.50	0.59	0.58	0.48	0.48	0.56	0.40	
		N	31	31	31	31	30	31	31	31	31	31	31	31	
Total	F	Mean	3.56	3.53	3.59	3.71	3.70	3.76	3.68	3.74	3.79	3.65	3.56	3.82	
		Std. Deviation	0.56	0.56	0.61	0.58	0.53	0.50	0.59	0.57	0.48	0.49	0.56	0.39	
		N	34	34	34	34	33	34	34	34	34	34	34	33	
	M	Mean	3.50	3.50	3.50	4.00	2.00	4.00	4.00	4.00	4.00	4.00	4.00	4.00	
		Std. Deviation	0.71	0.71	0.71	0.00	2.83	0.00	0.00	0.00	0.00	0.00	0.00	0.00	
		N	2	2	2	2	2	2	2	2	2	2	2	2	
	Total	Mean	3.56	3.53	3.58	3.72	3.60	3.78	3.69	3.75	3.81	3.67	3.58	3.83	
		Std. Deviation	0.56	0.56	0.60	0.57	0.81	0.48	0.58	0.55	0.47	0.48	0.55	0.38	
		N	36	36	36	36	35	36	36	36	36	36	36	35	

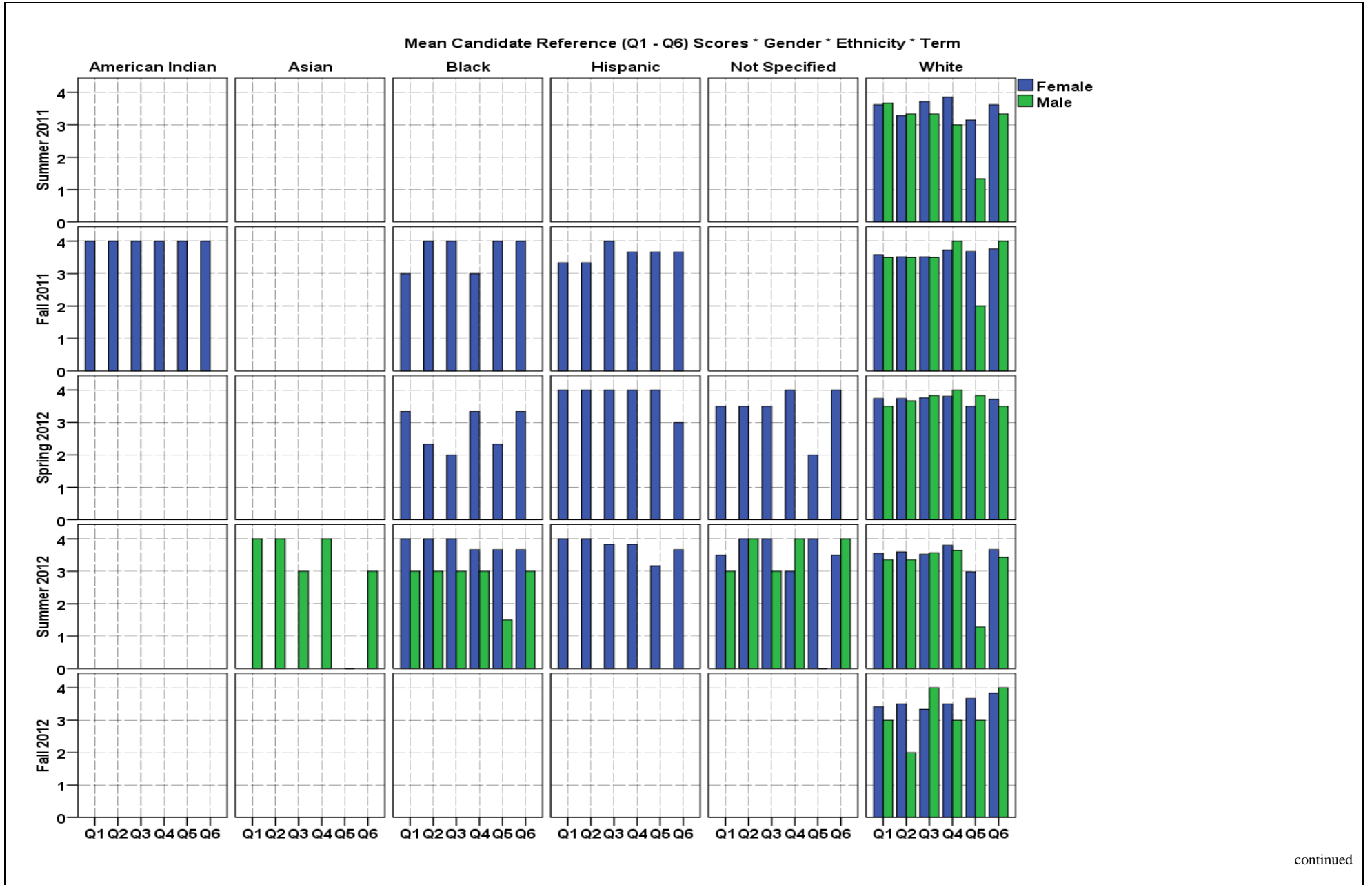
continued

		Candidate Reference Scores * Gender * Ethnicity * Term														
Term	Ethnicity	Gender	Q1	Q2	Q3	Q4	Q5	Q6	Q7	Q8	Q9	Q10	Q11	Q12		
Spring 2012	Black	F	Mean	3.33	2.33	2.00	3.33	2.33	3.33	2.67	3.33	3.67	3.00	3.00	3.00	
			Std. Deviation	0.58	2.08	2.00	0.58	2.08	0.58	2.31	0.58	0.58	1.00	1.00	1.00	
			N	3	3	3	3	3	3	3	3	3	3	3	3	3
		Total	Mean	3.33	2.33	2.00	3.33	2.33	3.33	2.67	3.33	3.67	3.00	3.00	3.00	3.00
			Std. Deviation	0.58	2.08	2.00	0.58	2.08	0.58	2.31	0.58	0.58	1.00	1.00	1.00	
			N	3	3	3	3	3	3	3	3	3	3	3	3	
		Hispanic	F	Mean	4.00	4.00	4.00	4.00	4.00	3.00	4.00	3.00	3.00	3.00	3.00	4.00
				Std. Deviation
				N	1	1	1	1	1	1	1	1	1	1	1	1
	Total		Mean	4.00	4.00	4.00	4.00	4.00	3.00	4.00	3.00	3.00	3.00	3.00	4.00	
			Std. Deviation	
			N	1	1	1	1	1	1	1	1	1	1	1	1	
	Not Specified	F	Mean	3.50	3.50	3.50	4.00	2.00	4.00	4.00	3.50	4.00	4.00	3.50	4.00	
			Std. Deviation	0.71	0.71	0.71	0.00	2.83	0.00	0.00	0.71	0.00	0.00	0.71	0.00	
			N	2	2	2	2	2	2	2	2	2	2	2	2	
		Total	Mean	3.50	3.50	3.50	4.00	2.00	4.00	4.00	3.50	4.00	4.00	3.50	4.00	
			Std. Deviation	0.71	0.71	0.71	0.00	2.83	0.00	0.00	0.71	0.00	0.00	0.71	0.00	
			N	2	2	2	2	2	2	2	2	2	2	2	2	
	White	F	Mean	3.74	3.74	3.76	3.81	3.50	3.71	3.74	3.69	3.83	3.69	3.60	3.86	
			Std. Deviation	0.45	0.50	0.43	0.40	1.19	0.46	0.70	0.90	0.44	0.47	0.73	0.35	
			N	42	42	42	42	42	42	42	42	42	42	42	42	
			M	Mean	3.50	3.67	3.83	4.00	3.83	3.50	3.67	3.67	4.00	3.67	3.50	3.83
				Std. Deviation	0.84	0.52	0.41	0.00	0.41	0.84	0.82	0.82	0.00	0.52	0.84	0.41
				N	6	6	6	6	6	6	6	6	6	6	6	6
Total		Mean	3.71	3.73	3.77	3.83	3.54	3.69	3.73	3.69	3.85	3.69	3.58	3.85		
		Std. Deviation	0.50	0.49	0.42	0.38	1.13	0.51	0.71	0.88	0.41	0.47	0.74	0.36		
		N	48	48	48	48	48	48	48	48	48	48	48	48		
Total		F	Mean	3.71	3.65	3.65	3.79	3.38	3.69	3.69	3.65	3.81	3.65	3.54	3.81	
			Std. Deviation	0.46	0.73	0.73	0.41	1.33	0.47	0.85	0.86	0.45	0.53	0.74	0.45	
			N	48	48	48	48	48	48	48	48	48	48	48	48	
	M	Mean	3.50	3.67	3.83	4.00	3.83	3.50	3.67	3.67	4.00	3.67	3.50	3.83		
		Std. Deviation	0.84	0.52	0.41	0.00	0.41	0.84	0.82	0.82	0.00	0.52	0.84	0.41		
		N	6	6	6	6	6	6	6	6	6	6	6	6		
Total	Mean	3.69	3.65	3.67	3.81	3.43	3.67	3.69	3.65	3.83	3.65	3.54	3.81			
	Std. Deviation	0.51	0.70	0.70	0.39	1.27	0.51	0.84	0.85	0.42	0.52	0.75	0.44			
	N	54	54	54	54	54	54	54	54	54	54	54	54			
Summer 2012	Asian	M	Mean	4.00	4.00	3.00	4.00	0.00	3.00	3.00	4.00	4.00	3.00	3.00	4.00	
			Std. Deviation	
			N	1	1	1	1	1	1	1	1	1	1	1	1	
	Total	Mean	4.00	4.00	3.00	4.00	0.00	3.00	3.00	4.00	4.00	3.00	3.00	4.00		
		Std. Deviation		
		N	1	1	1	1	1	1	1	1	1	1	1	1		
	Black	F	Mean	4.00	4.00	4.00	3.67	3.67	3.67	4.00	4.00	4.00	3.33	3.00	4.00	
			Std. Deviation	0.00	0.00	0.00	0.58	0.58	0.58	0.00	0.00	0.00	0.58	0.00	0.00	
			N	3	3	3	3	3	3	3	3	3	3	3	3	
		M	Mean	3.00	3.00	3.00	3.00	1.50	3.00	1.00	1.00	3.50	3.50	3.00	3.50	
			Std. Deviation	1.41	1.41	1.41	1.41	2.12	1.41	1.41	1.41	0.71	0.71	0.00	0.71	
			N	2	2	2	2	2	2	2	2	2	2	2	2	
		Total	Mean	3.60	3.60	3.60	3.40	2.80	3.40	2.80	2.80	3.80	3.40	3.00	3.80	
			Std. Deviation	0.89	0.89	0.89	0.89	1.64	0.89	1.79	1.79	0.45	0.55	0.00	0.45	
			N	5	5	5	5	5	5	5	5	5	5	5	5	
	Hispanic	F	Mean	4.00	4.00	3.83	3.83	3.17	3.67	3.83	3.17	3.83	3.67	4.00	4.00	
			Std. Deviation	0.00	0.00	0.41	0.41	1.60	0.52	0.41	1.60	0.41	0.52	0.00	0.00	
			N	6	6	6	6	6	6	6	6	6	6	6	6	
		Total	Mean	4.00	4.00	3.83	3.83	3.17	3.67	3.83	3.17	3.83	3.67	4.00	4.00	
			Std. Deviation	0.00	0.00	0.41	0.41	1.60	0.52	0.41	1.60	0.41	0.52	0.00	0.00	
			N	6	6	6	6	6	6	6	6	6	6	6	6	
	Not Specified	F	Mean	3.50	4.00	4.00	3.00	4.00	3.50	4.00	3.00	4.00	4.00	3.50	4.00	
			Std. Deviation	0.71	0.00	0.00	.	0.00	0.71	0.00	0.00	0.00	0.00	0.71	0.00	
			N	2	2	2	1	2	2	2	2	2	2	2	2	
M		Mean	3.00	4.00	3.00	4.00	0.00	4.00	4.00	3.00	3.00	3.00	3.00	3.00		
		Std. Deviation		
		N	1	1	1	1	1	1	1	1	1	1	1	1		
Total	Mean	3.33	4.00	3.67	3.50	2.67	3.67	4.00	3.00	3.67	3.67	3.33	3.67			
	Std. Deviation	0.58	0.00	0.58	0.71	2.31	0.58	0.00	0.00	0.58	0.58	0.58	0.58			
	N	3	3	3	2	3	3	3	3	3	3	3	3			
White	F	Mean	3.56	3.60	3.53	3.80	2.99	3.67	3.46	3.51	3.77	3.65	3.66	3.76		
		Std. Deviation	0.67	0.71	0.68	0.53	1.62	0.58	1.10	1.00	0.57	0.71	0.63	0.55		
		N	70	70	70	70	70	70	70	70	70	70	68	70		
	M	Mean	3.36	3.36	3.57	3.64	1.29	3.43	3.57	3.14	3.79	3.36	3.36	3.71		
		Std. Deviation	1.08	0.63	0.51	0.50	1.82	0.51	0.51	1.17	0.43	0.74	0.74	0.47		
		N	14	14	14	14	14	14	14	14	14	14	14	14		
	Total	Mean	3.52	3.56	3.54	3.77	2.70	3.63	3.48	3.45	3.77	3.60	3.61	3.76		
		Std. Deviation	0.75	0.70	0.65	0.52	1.76	0.58	1.02	1.03	0.55	0.72	0.66	0.53		
		N	84	84	84	84	84	84	84	84	84	84	82	84		
Total	F	Mean	3.60	3.65	3.58	3.79	3.05	3.67	3.52	3.49	3.79	3.65	3.65	3.80		
		Std. Deviation	0.65	0.67	0.65	0.52	1.57	0.57	1.04	1.03	0.54	0.68	0.62	0.52		
		N	81	81	81	80	81	81	81	81	81	81	79	81		
	M	Mean	3.33	3.39	3.44	3.61	1.17	3.39	3.28	2.94	3.72	3.33	3.28	3.67		
		Std. Deviation	1.03	0.70	0.62	0.61	1.72	0.61	1.02	1.30	0.46	0.69	0.67	0.49		
		N	18	18	18	18	18	18	18	18	18	18	18	18		
	Total	Mean	3.56	3.61	3.56	3.76	2.71	3.62	3.47	3.39	3.78	3.59	3.59	3.77		
		Std. Deviation	0.73	0.68	0.64	0.54	1.75	0.58	1.03	1.10	0.53	0.69	0.64	0.51		
		N	99	99	99	98	99	99	99	99	99	99	97	99		

continued

Candidate Reference Scores * Gender * Ethnicity * Term																	
Term	Ethnicity	Gender		Q1	Q2	Q3	Q4	Q5	Q6	Q7	Q8	Q9	Q10	Q11	Q12		
Fall 2012	White	F	Mean	3.42	3.50	3.33	3.50	3.67	3.83	3.25	3.67	3.67	3.25	3.75	3.83		
			Std. Deviation	0.79	0.52	0.78	0.67	0.49	0.39	1.22	0.49	0.49	0.49	1.22	0.62	0.39	
			N	12	12	12	12	12	12	12	12	12	12	12	12	12	12
		M	Mean	3.00	2.00	4.00	3.00	3.00	4.00	3.00	4.00	3.00	4.00	2.00	3.00	3.00	3.00
			Std. Deviation
			N	1	1	1	1	1	1	1	1	1	1	1	1	1	1
		Total	Mean	3.38	3.38	3.38	3.46	3.62	3.85	3.23	3.69	3.54	3.23	3.69	3.69	3.77	
			Std. Deviation	0.77	0.65	0.77	0.66	0.51	0.38	1.17	0.48	0.66	1.17	0.63	0.44		
			N	13	13	13	13	13	13	13	13	13	13	13	13	13	
	Total	F	Mean	3.42	3.50	3.33	3.50	3.67	3.83	3.25	3.67	3.67	3.25	3.75	3.83		
			Std. Deviation	0.79	0.52	0.78	0.67	0.49	0.39	1.22	0.49	0.49	0.49	1.22	0.62	0.39	
			N	12	12	12	12	12	12	12	12	12	12	12	12	12	
		M	Mean	3.00	2.00	4.00	3.00	3.00	4.00	3.00	4.00	3.00	4.00	2.00	3.00	3.00	
			Std. Deviation	
			N	1	1	1	1	1	1	1	1	1	1	1	1	1	
		Total	Mean	3.38	3.38	3.38	3.46	3.62	3.85	3.23	3.69	3.54	3.23	3.69	3.69	3.77	
			Std. Deviation	0.77	0.65	0.77	0.66	0.51	0.38	1.17	0.48	0.66	1.17	0.63	0.44		
			N	13	13	13	13	13	13	13	13	13	13	13	13	13	
Total	American Indian	F	Mean	4.00	4.00	4.00	4.00	4.00	4.00	4.00	4.00	4.00	4.00	4.00	4.00		
			Std. Deviation		
			N	1	1	1	1	1	1	1	1	1	1	1	1		
		Total	Mean	4.00	4.00	4.00	4.00	4.00	4.00	4.00	4.00	4.00	4.00	4.00	4.00		
			Std. Deviation		
			N	1	1	1	1	1	1	1	1	1	1	1	1		
	Asian	M	Mean	4.00	4.00	3.00	4.00	0.00	3.00	3.00	4.00	4.00	3.00	3.00	4.00		
			Std. Deviation		
			N	1	1	1	1	1	1	1	1	1	1	1	1		
		Total	Mean	4.00	4.00	3.00	4.00	0.00	3.00	3.00	4.00	4.00	3.00	3.00	4.00		
			Std. Deviation		
			N	1	1	1	1	1	1	1	1	1	1	1	1		
	Black	F	Mean	3.57	3.29	3.14	3.43	3.14	3.57	3.43	3.71	3.86	3.14	3.00	3.57		
			Std. Deviation	0.53	1.50	1.57	0.53	1.46	0.53	1.51	0.49	0.38	0.69	0.58	0.79		
			N	7	7	7	7	7	7	7	7	7	7	7	7		
			M	Mean	3.00	3.00	3.00	3.00	1.50	3.00	1.00	1.00	3.50	3.50	3.00	3.50	
				Std. Deviation	1.41	1.41	1.41	1.41	2.12	1.41	1.41	1.41	0.71	0.71	0.00	0.71	
				N	2	2	2	2	2	2	2	2	2	2	2	2	
Total		Mean	3.44	3.22	3.11	3.33	2.78	3.44	2.89	3.11	3.78	3.22	3.00	3.56			
		Std. Deviation	0.73	1.39	1.45	0.71	1.64	0.73	1.76	1.36	0.44	0.67	0.50	0.73			
		N	9	9	9	9	9	9	9	9	9	9	9	9			
Hispanic		F	Mean	3.80	3.80	3.90	3.80	3.40	3.60	3.70	3.30	3.70	3.60	3.70	4.00		
			Std. Deviation	0.42	0.42	0.32	0.42	1.26	0.52	0.48	1.25	0.48	0.52	0.48	0.00		
			N	10	10	10	10	10	10	10	10	10	10	10	9		
	Total	Mean	3.80	3.80	3.90	3.80	3.40	3.60	3.70	3.30	3.70	3.60	3.70	4.00			
		Std. Deviation	0.42	0.42	0.32	0.42	1.26	0.52	0.48	1.25	0.48	0.52	0.48	0.00			
		N	10	10	10	10	10	10	10	10	10	10	10	9			
Not Specified	F	Mean	3.50	3.75	3.75	3.67	3.00	3.75	4.00	3.25	4.00	4.00	3.50	4.00			
		Std. Deviation	0.58	0.50	0.50	0.58	2.00	0.50	0.00	0.50	0.00	0.00	0.58	0.00			
		N	4	4	4	3	4	4	4	4	4	4	4	4			
	M	Mean	3.00	4.00	3.00	4.00	0.00	4.00	4.00	3.00	3.00	3.00	3.00	3.00			
		Std. Deviation			
		N	1	1	1	1	1	1	1	1	1	1	1	1			
Total	Mean	3.40	3.80	3.60	3.75	2.40	3.80	4.00	3.20	3.80	3.80	3.40	3.80				
	Std. Deviation	0.55	0.45	0.55	0.50	2.19	0.45	0.00	0.45	0.45	0.45	0.55	0.45				
	N	5	5	5	4	5	5	5	5	5	5	5	5				
White	F	Mean	3.60	3.57	3.59	3.78	3.29	3.70	3.56	3.60	3.77	3.64	3.64	3.81			
		Std. Deviation	0.60	0.67	0.61	0.51	1.35	0.59	0.94	0.89	0.57	0.66	0.63	0.45			
		N	174	174	174	174	173	174	174	174	174	173	172	174			
		M	Mean	3.42	3.38	3.62	3.65	2.00	3.50	3.46	3.32	3.69	3.42	3.42	3.65		
			Std. Deviation	0.90	0.64	0.50	0.56	1.92	0.65	0.90	1.03	0.62	0.70	0.70	0.56		
			N	26	26	26	26	26	26	26	25	26	26	26	26		
	Total	Mean	3.58	3.55	3.60	3.76	3.12	3.68	3.55	3.57	3.76	3.61	3.62	3.79			
		Std. Deviation	0.64	0.67	0.59	0.51	1.50	0.60	0.93	0.91	0.58	0.66	0.64	0.47			
		N	200	200	200	200	199	200	200	199	199	198	200	198			
	Total	F	Mean	3.61	3.58	3.60	3.76	3.29	3.69	3.58	3.59	3.78	3.63	3.62	3.81		
			Std. Deviation	0.58	0.70	0.65	0.50	1.35	0.58	0.93	0.89	0.55	0.65	0.62	0.45		
			N	196	196	196	195	195	196	196	196	195	194	196	193		
M		Mean	3.40	3.40	3.53	3.63	1.83	3.47	3.30	3.17	3.67	3.40	3.37	3.63			
		Std. Deviation	0.89	0.67	0.57	0.61	1.90	0.68	1.09	1.17	0.61	0.67	0.67	0.56			
		N	30	30	30	30	30	30	30	29	30	30	30	30			
Total	Mean	3.58	3.56	3.59	3.75	3.09	3.66	3.54	3.53	3.76	3.60	3.59	3.79				
	Std. Deviation	0.64	0.70	0.64	0.52	1.52	0.60	0.96	0.94	0.56	0.66	0.64	0.47				
	N	226	226	226	225	225	226	226	225	225	224	226	223				

Candidate Reference Form Scores * Gender * Ethnicity * Term (Graph)



continued

Mean Candidate Reference (Q7 - Q12) Scores * Gender * Ethnicity * Term

