



FEINSTEIN SCHOOL OF EDUCATION AND HUMAN DEVELOPMENT

PROFILE OF ADMISSIONS TO GRADUATE STUDIES  
5/1/2019 – 5/31/2020

PROGRAM STATISTICS

Contents

Gender \* Ethnicity \* Program ..... 2

Gender \* Ethnicity \* Program (Graph)..... 3

GRE Analysis (0-6), MAT (0-99), MAT (200-800), GPA; Essay: Content\*, Conventions\*, Overall\*;  
Performance-Based Evaluation\*\* \* Program ..... 4

Professional Goals Essay: Content, Conventions, Overall; Performance-Based Evaluation, GPA, GRE Analysis  
(0-6) \* Program (Graph) ..... 5

Professional Goals Essay: Content by Program (Graph) ..... 6

Professional Goals Essay: Conventions by Program (Graph) ..... 6

Professional Goals Essay: Overall by Program (Graph)..... 7

Performance-Based Evaluation by Program (Graph) ..... 7

GRE Analysis (0-6), MAT (200-800), MAT (0-99), GPA, Professional Goals Essay†: Content, Conventions,  
Overall; Performance-Based Evaluation‡ \* Gender \* Ethnicity \* Program ..... 8

Professional Goals Essay: *Content* rating \* Gender \* Ethnicity \* Program (Graph) ..... 17

Professional Goals Essay: *Conventions* rating \* Gender \* Ethnicity \* Program (Graph)..... 18

Professional Goals Essay: *Overall* rating \* Gender \* Ethnicity \* Program (Graph)..... 19

Performance-Based Evaluation rating \* Gender \* Ethnicity \* Program (Graph) ..... 20

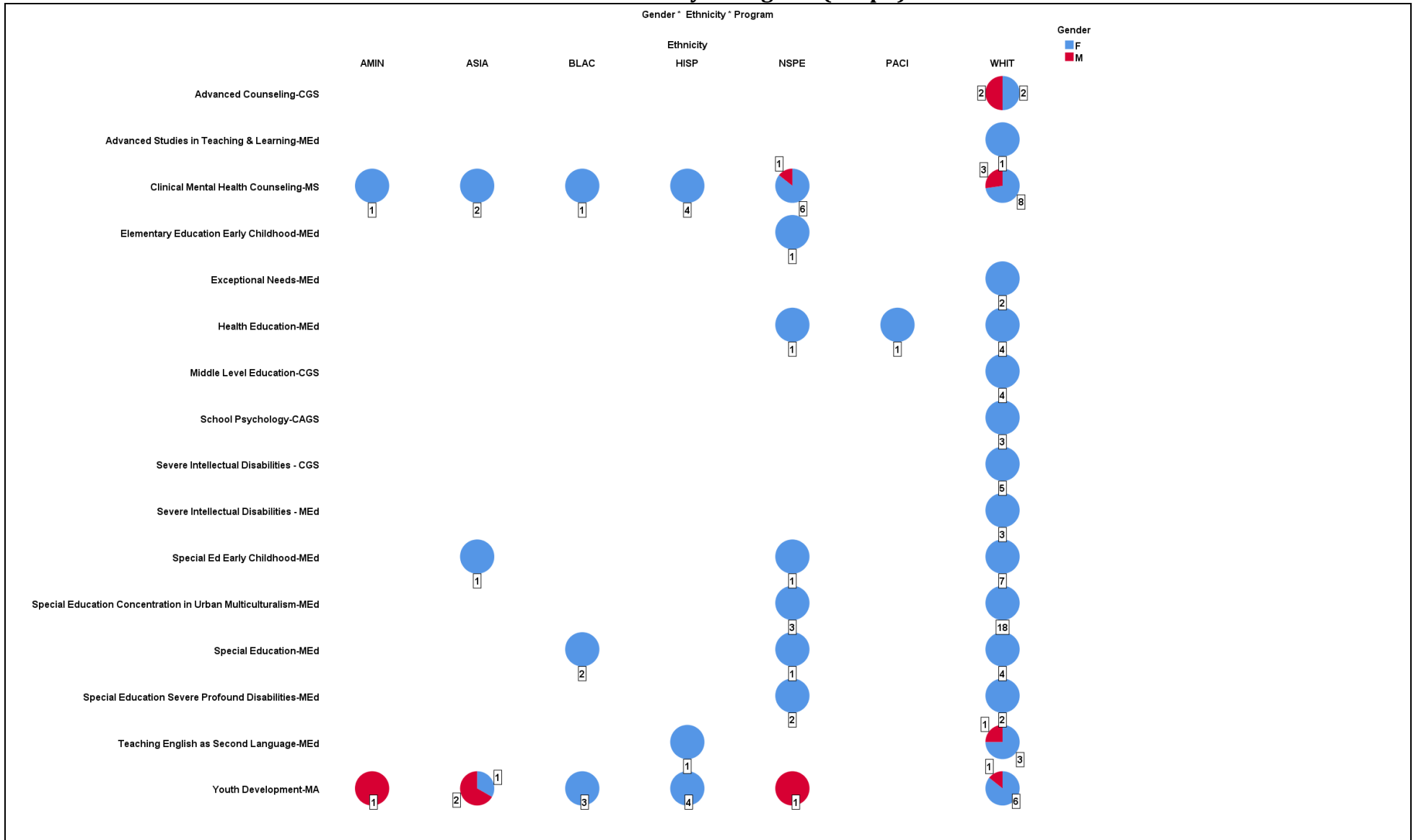
## Gender \* Ethnicity \* Program

### Gender \* Ethnicity \* Program Crosstabulation

Count

Program			AMIN	ASIA	BLAC	HISP	NSPE	PACI	WHIT	Total
Advanced Counseling- CGS	Gender	F							2	2
		M							2	2
	Total								4	4
Advanced Studies in Teaching & Learning- MEd	Gender	F							1	1
	Total								1	1
Clinical Mental Health Counseling-MS	Gender	F	1	2	1	4	6		8	22
		M	0	0	0	0	1		3	4
	Total		1	2	1	4	7		11	26
Elementary Education Early Childhood-MEd	Gender	F					1			1
	Total						1			1
Exceptional Needs-MEd	Gender	F							2	2
	Total								2	2
Health Education-MEd	Gender	F					1	1	4	6
	Total						1	1	4	6
Middle Level Education- CGS	Gender	F							4	4
	Total								4	4
School Psychology-CAGS	Gender	F							3	3
	Total								3	3
Severe Intellectual Disabilities - CGS	Gender	F							5	5
	Total								5	5
Severe Intellectual Disabilities - MEd	Gender	F							3	3
	Total								3	3
Special Ed Early Childhood-MEd	Gender	F		1			1		7	9
	Total			1			1		7	9
Special Education Concentration in Urban Multiculturalism-MEd	Gender	F					3		18	21
	Total						3		18	21
Special Education Severe Profound Disabilities- MEd	Gender	F					2		2	4
	Total						2		2	4
Special Education-MEd	Gender	F			2		1		4	7
	Total				2		1		4	7
Teaching English as Second Language-MEd	Gender	F				1			3	4
		M				0			1	1
	Total					1			4	5
Youth Development-MA	Gender	F	0	1	3	4	0		6	14
		M	1	2	0	0	1		1	5
	Total		1	3	3	4	1		7	19
Total	Gender	F	1	4	6	9	15	1	72	108
		M	1	2	0	0	2	0	7	12
	Total		2	6	6	9	17	1	79	120

# Gender \* Ethnicity \* Program (Graph)

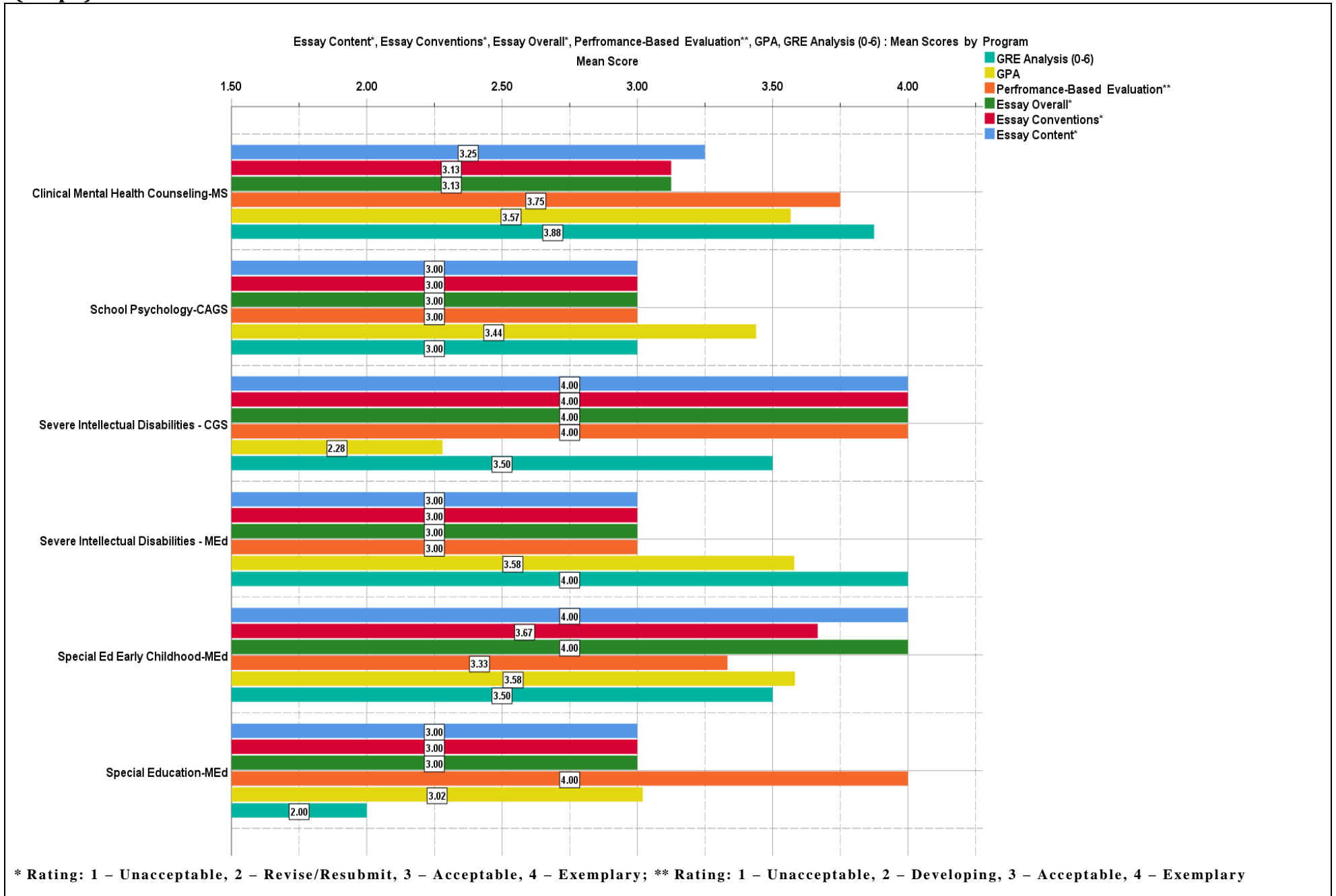


**GRE Analysis (0-6), MAT (0-99), MAT (200-800), GPA; Essay: Content\*, Conventions\*, Overall\*; Performance-Based Evaluation\*\* \* Program**

Program		GRE Analysis (0-6)	MAT (0-99)	MAT (200-800)	GPA	Essay Content*	Essay Conventions*	Essay Overall*	Performance-Based Evaluation**
Advanced Counseling-CGS	Mean				3.31	3.25	3.25	3.25	3.25
	Std. Deviation				.64	.50	.50	.50	.96
	Median				3.64	3.00	3.00	3.00	3.50
	N				3	4	4	4	4
Advanced Studies in Teaching & Learning-MEd	Mean			411.00	3.14	4.00	4.00	4.00	4.00
	Std. Deviation			.	.	.	.	.	.
	Median			411.00	3.14	4.00	4.00	4.00	4.00
	N			1	1	1	1	1	1
Clinical Mental Health Counseling-MS	Mean	3.78	36.00	395.50	3.42	3.19	3.12	3.12	3.42
	Std. Deviation	.97	.	9.19	.48	.63	.59	.59	.72
	Median	4.00	36.00	395.50	3.52	3.00	3.00	3.00	3.50
	N	9	1	2	23	26	26	26	24
Elementary Education Early Childhood-MEd	Mean			380.00		3.00	3.00	3.00	3.00
	Std. Deviation			.		.	.	.	.
	Median			380.00		3.00	3.00	3.00	3.00
	N			1		1	1	1	1
Exceptional Needs-MEd	Mean	4.00			3.82	4.00	3.50	3.50	4.00
	Std. Deviation	.			.	.00	.71	.71	.00
	Median	4.00			3.82	4.00	3.50	3.50	4.00
	N	1			1	2	2	2	2
Health Education-MEd	Mean				3.26	3.00	3.33	3.00	3.60
	Std. Deviation				.63	.00	.52	.00	.55
	Median				3.17	3.00	3.00	3.00	4.00
	N				6	6	6	6	5
Middle Level Education-CGS	Mean				3.86	3.25	3.00	3.00	3.25
	Std. Deviation				.03	.50	.00	.00	.50
	Median				3.84	3.00	3.00	3.00	3.00
	N				3	4	4	4	4
School Psychology-CAGS	Mean	3.33			3.62	3.00	3.00	3.00	3.00
	Std. Deviation	.58			.31	.00	.00	.00	.00
	Median	3.00			3.44	3.00	3.00	3.00	3.00
	N	3			3	2	2	2	3
Severe Intellectual Disabilities - CGS	Mean	3.50			2.90	3.00	3.80	3.20	3.80
	Std. Deviation	.			.42	.71	.45	.45	.45
	Median	3.50			3.05	3.00	4.00	3.00	4.00
	N	1			4	5	5	5	5
Severe Intellectual Disabilities - MEd	Mean	4.00			3.84	3.33	3.00	3.00	3.67
	Std. Deviation	.			.23	.58	.00	.00	.58
	Median	4.00			3.97	3.00	3.00	3.00	4.00
	N	1			3	3	3	3	3
Special Ed Early Childhood-MEd	Mean	3.50			3.33	3.78	3.56	3.67	3.57
	Std. Deviation	.87			.38	.44	.53	.50	.53
	Median	3.00			3.37	4.00	4.00	4.00	4.00
	N	3			8	9	9	9	7
Special Education Concentration in Urban Multiculturalism-MEd	Mean			378.00	3.49	3.14	3.14	3.14	3.52
	Std. Deviation			.	.34	.48	.48	.48	.60
	Median			378.00	3.48	3.00	3.00	3.00	4.00
	N			1	18	21	21	21	21
Special Education Severe Profound Disabilities-MEd	Mean	5.00		385.00	3.75	3.50	3.50	3.25	4.00
	Std. Deviation	.		.00	.00	.58	.58	.50	.00
	Median	5.00		385.00	3.75	3.50	3.50	3.00	4.00
	N	1		2	2	4	4	4	4
Special Education-MEd	Mean	2.00			3.30	3.57	3.29	3.43	3.71
	Std. Deviation	.			.57	.53	.49	.53	.49
	Median	2.00			3.02	4.00	3.00	3.00	4.00
	N	1			5	7	7	7	7
Teaching English as Second Language-MEd	Mean	2.50			3.28	3.00	3.00	3.00	3.60
	Std. Deviation	.			.62	.00	.00	.00	.55
	Median	2.50			2.94	3.00	3.00	3.00	4.00
	N	1			3	5	5	5	5
Youth Development-MA	Mean				3.22	3.69	3.38	3.62	
	Std. Deviation				.35	.63	.65	.65	
	Median				3.19	4.00	3.00	4.00	
	N				10	13	13	13	
Total	Mean	3.60	36.00	390.00	3.40	3.32	3.26	3.25	3.53
	Std. Deviation	.90	.	12.11	.45	.57	.53	.53	.60
	Median	3.50	36.00	385.00	3.45	3.00	3.00	3.00	4.00
	N	21	1	7	93	113	113	113	96

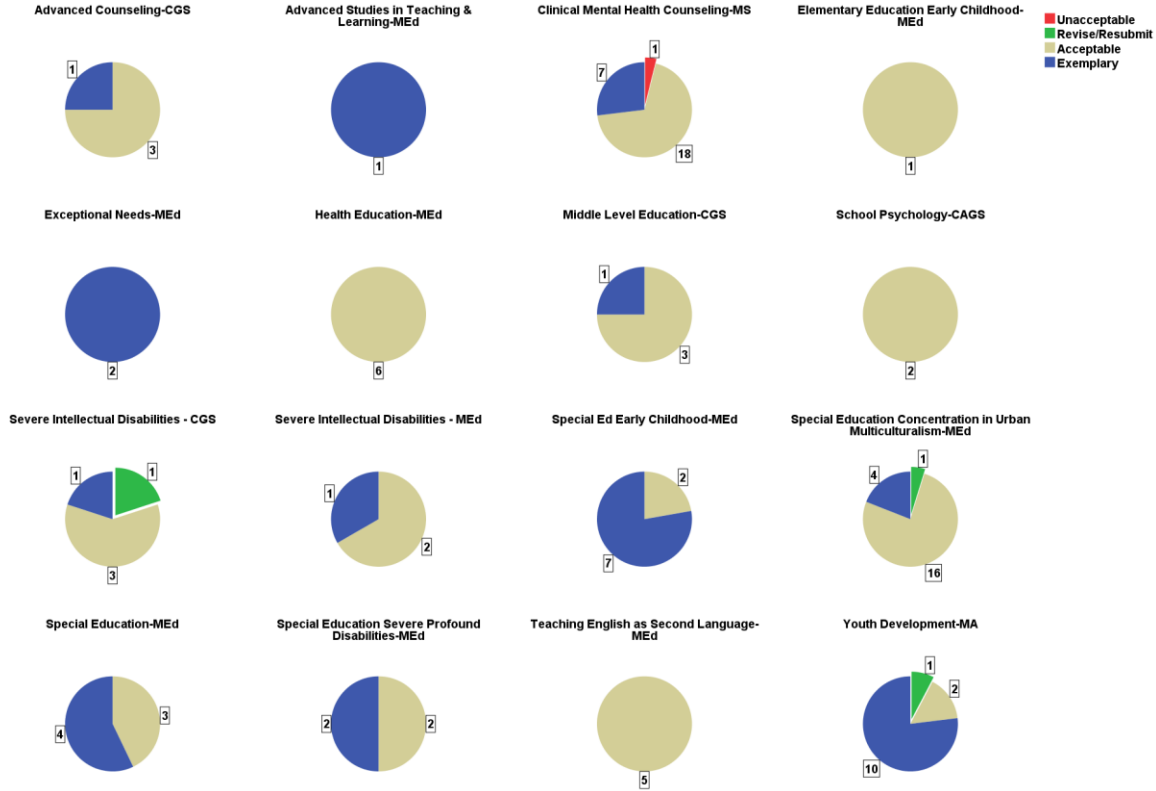
\* Rating: 1 – Unacceptable, 2 – Revise/Resubmit, 3 – Acceptable, 4 – Exemplary; \*\* Rating: 1 – Unacceptable, 2 – Developing, 3 – Acceptable, 4 – Exemplary

# Professional Goals Essay: Content, Conventions, Overall; Performance-Based Evaluation, GPA, GRE Analysis (0-6) \* Program (Graph)



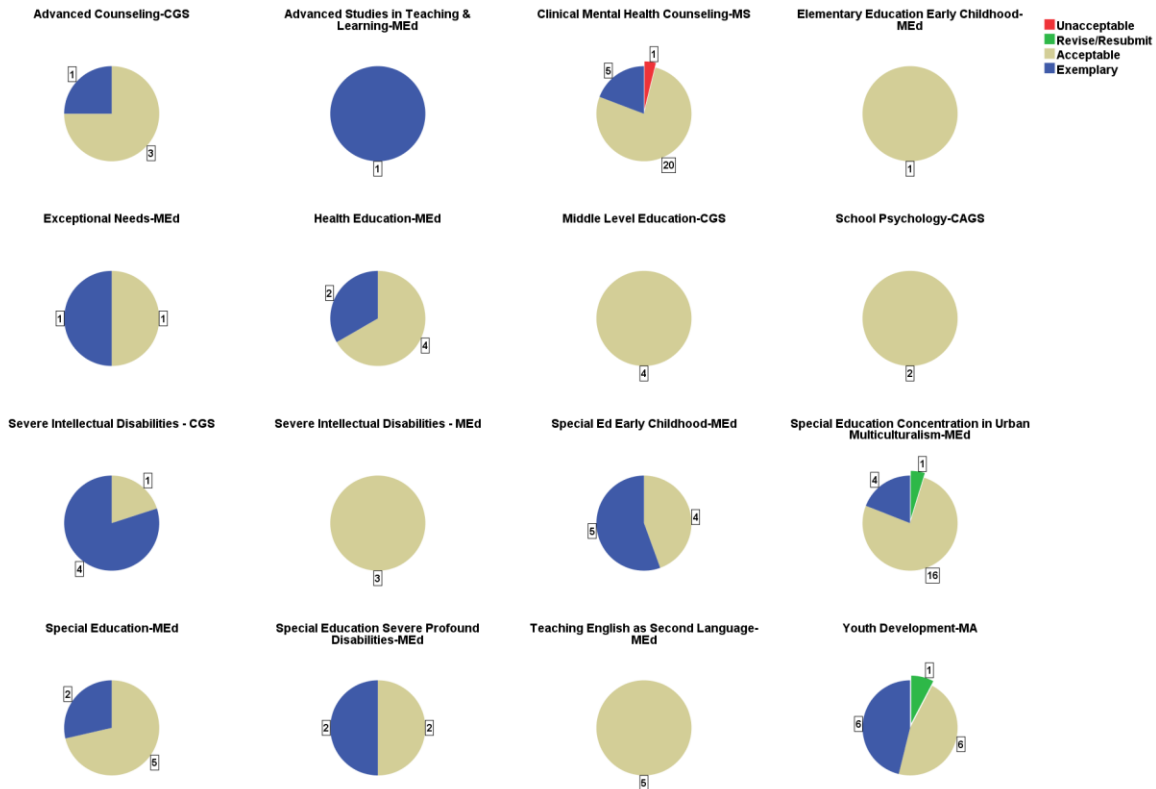
## Professional Goals Essay: Content by Program (Graph)

Essay Content by Program



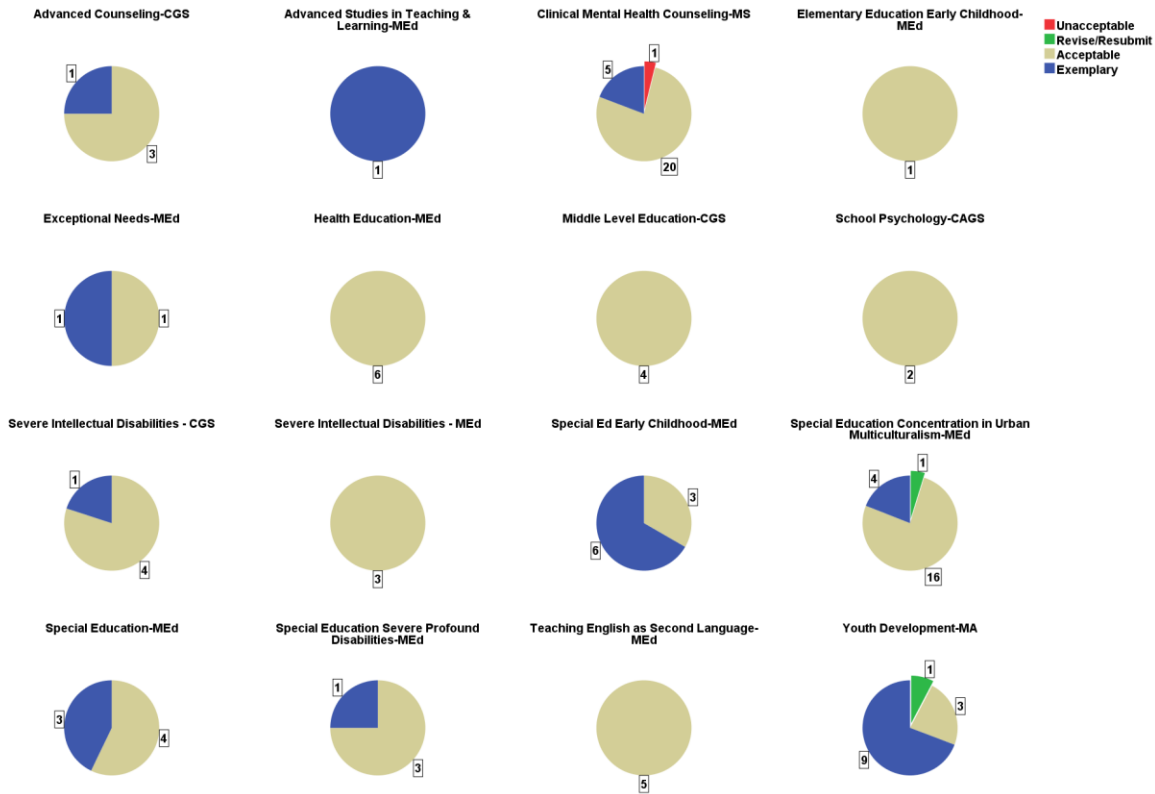
## Professional Goals Essay: Conventions by Program (Graph)

Essay Conventions by Program



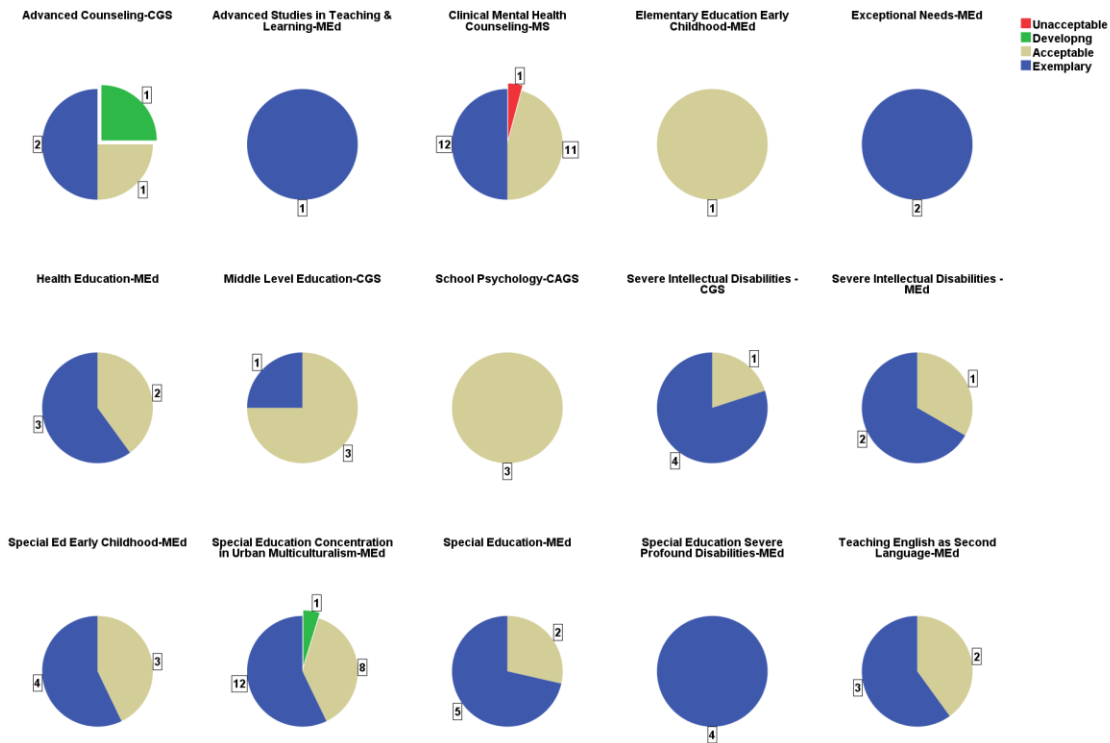
## Professional Goals Essay: Overall by Program (Graph)

Essay Overall by Program



## Performance-Based Evaluation by Program (Graph)

Performance-Based Evaluation by Program



**GRE Analysis (0-6), MAT (200-800), MAT (0-99), GPA, Professional Goals Essay†: Content, Conventions, Overall; Performance-Based Evaluation‡ \* Gender \* Ethnicity \* Program**

Advanced Counseling-CGS								
Ethnicity	Gender		GPA	Essay Content*	Essay Conventions*	Essay Overall*	Performance-Based Evaluation**	
WHIT	F	Mean	3.71	3.50	3.50	3.50	2.50	
		Std. Deviation	.	.71	.71	.71	.71	
		Median	3.71	3.50	3.50	3.50	2.50	
		N	1	2	2	2	2	
	M	Mean	3.11	3.00	3.00	3.00	4.00	
		Std. Deviation	.75	.00	.00	.00	.00	
		Median	3.11	3.00	3.00	3.00	4.00	
		N	2	2	2	2	2	
	Total	Mean	3.31	3.25	3.25	3.25	3.25	
		Std. Deviation	.64	.50	.50	.50	.96	
		Median	3.64	3.00	3.00	3.00	3.50	
		N	3	4	4	4	4	
Total	F	Mean	3.71	3.50	3.50	3.50	2.50	
		Std. Deviation	.	.71	.71	.71	.71	
		Median	3.71	3.50	3.50	3.50	2.50	
		N	1	2	2	2	2	
	M	Mean	3.11	3.00	3.00	3.00	4.00	
		Std. Deviation	.75	.00	.00	.00	.00	
		Median	3.11	3.00	3.00	3.00	4.00	
		N	2	2	2	2	2	
	Total	Mean	3.31	3.25	3.25	3.25	3.25	
		Std. Deviation	.64	.50	.50	.50	.96	
		Median	3.64	3.00	3.00	3.00	3.50	
		N	3	4	4	4	4	

Advanced Studies in Teaching & Learning-MEd								
Ethnicity	Gender		MAT (200-800)	GPA	Essay Content*	Essay Conventions*	Essay Overall*	Performance-Based Evaluation**
WHIT	F	Mean	411.00	3.14	4.00	4.00	4.00	4.00
		Std. Deviation	.	.	.	.	.	.
		Median	411.00	3.14	4.00	4.00	4.00	4.00
		N	1	1	1	1	1	1
	Total	Mean	411.00	3.14	4.00	4.00	4.00	4.00
		Std. Deviation	.	.	.	.	.	.
		Median	411.00	3.14	4.00	4.00	4.00	4.00
		N	1	1	1	1	1	1
Total	F	Mean	411.00	3.14	4.00	4.00	4.00	4.00
		Std. Deviation	.	.	.	.	.	.
		Median	411.00	3.14	4.00	4.00	4.00	4.00
		N	1	1	1	1	1	1
	Total	Mean	411.00	3.14	4.00	4.00	4.00	4.00
		Std. Deviation	.	.	.	.	.	.
		Median	411.00	3.14	4.00	4.00	4.00	4.00
		N	1	1	1	1	1	1

†Rating: 1-Unacceptable,2-Revise/Resubmit,3-Acceptable,4-Exemplary ‡ Rating: 1-Unacceptable,2-Improving,3-Acceptable,4-Exemplary

continued



**GRE Analysis (0-6), MAT (200-800), MAT (0-99), GPA, Professional Goals Essay†: Content, Conventions, Overall; Performance-Based Evaluation‡ \* Gender \* Ethnicity \* Program**

Clinical Mental Health Counseling-MS										
Ethnicity	Gender		GRE Analysis (0-6)	MAT (200-800)	MAT (0-99)	GPA	Essay Content*	Essay Conventions*	Essay Overall*	Performance-Based Evaluation**
AMIN	F	Mean	4.00			3.63	4.00	3.00	3.00	3.00
		Std. Deviation	.			.	.	.	.	.
		Median	4.00			3.63	4.00	3.00	3.00	3.00
	Total	N	1			1	1	1	1	1
		Mean	4.00			3.63	4.00	3.00	3.00	3.00
		Std. Deviation	.			.	.	.	.	.
ASIA	F	Mean	3.00			3.70	4.00	4.00	4.00	3.50
		Std. Deviation	.			.	.00	.00	.00	.71
		Median	3.00			3.70	4.00	4.00	4.00	3.50
	Total	N	1			1	2	2	2	2
		Mean	3.00			3.70	4.00	4.00	4.00	3.50
		Std. Deviation	.			.	.00	.00	.00	.71
BLAC	F	Mean				3.91	4.00	4.00	4.00	3.00
		Std. Deviation					.	.	.	.
		Median				3.91	4.00	4.00	4.00	3.00
	Total	N				1	1	1	1	1
		Mean				3.91	4.00	4.00	4.00	3.00
		Std. Deviation					.	.	.	.
HISP	F	Mean	2.50		36.00	3.17	3.00	3.00	3.00	3.50
		Std. Deviation	.		.	.49	.00	.00	.00	.58
		Median	2.50		36.00	3.45	3.00	3.00	3.00	3.50
	Total	N	1		1	3	4	4	4	4
		Mean	2.50		36.00	3.17	3.00	3.00	3.00	3.50
		Std. Deviation	.		.	.49	.00	.00	.00	.58
NSPE	F	Mean	4.17	402.00		3.53	3.00	2.83	2.83	3.40
		Std. Deviation	1.44	.		.37	1.10	.98	.98	1.34
		Median	5.00	402.00		3.59	3.00	3.00	3.00	4.00
		N	3	1		6	6	6	6	5
	M	Mean		389.00		2.34	4.00	4.00	4.00	4.00
		Std. Deviation		.		.	.	.	.	.
		Median		389.00		2.34	4.00	4.00	4.00	4.00
		N		1		1	1	1	1	1
	Total	Mean	4.17	395.50		3.36	3.14	3.00	3.00	3.50
		Std. Deviation	1.44	9.19		.57	1.07	1.00	1.00	1.22
		Median	5.00	395.50		3.38	3.00	3.00	3.00	4.00
		N	3	2		7	7	7	7	6
WHIT	F	Mean	4.00			3.59	3.00	3.00	3.00	3.43
		Std. Deviation	.			.31	.00	.00	.00	.53
		Median	4.00			3.53	3.00	3.00	3.00	3.00
		N	1			7	8	8	8	7
	M	Mean	4.00			3.12	3.00	3.00	3.00	3.33
		Std. Deviation	.71			.71	.00	.00	.00	.58
		Median	4.00			3.34	3.00	3.00	3.00	3.00
		N	2			3	3	3	3	3
	Total	Mean	4.00			3.45	3.00	3.00	3.00	3.40
		Std. Deviation	.50			.48	.00	.00	.00	.52
		Median	4.00			3.53	3.00	3.00	3.00	3.00
		N	3			10	11	11	11	10
Total	F	Mean	3.71	402.00	36.00	3.53	3.18	3.09	3.09	3.40
		Std. Deviation	1.07	.	.	.36	.66	.61	.61	.75
		Median	4.00	402.00	36.00	3.53	3.00	3.00	3.00	3.50
		N	7	1	1	19	22	22	22	20
	M	Mean	4.00	389.00		2.93	3.25	3.25	3.25	3.50
		Std. Deviation	.71	.		.70	.50	.50	.50	.58
		Median	4.00	389.00		2.84	3.00	3.00	3.00	3.50
		N	2	1		4	4	4	4	4
	Total	Mean	3.78	395.50	36.00	3.42	3.19	3.12	3.12	3.42
		Std. Deviation	.97	9.19	.	.48	.63	.59	.59	.72
		Median	4.00	395.50	36.00	3.52	3.00	3.00	3.00	3.50
		N	9	2	1	23	26	26	26	24

†Rating: 1-Unacceptable,2-Revise/Resubmit,3-Acceptable,4-Exemplary ‡ Rating: 1-Unacceptable,2-Improving,3-Acceptable,4-Exemplary

continued

**GRE Analysis (0-6), MAT (200-800), MAT (0-99), GPA, Professional Goals Essay†: Content, Conventions, Overall; Performance-Based Evaluation‡ \* Gender \* Ethnicity \* Program**

Elementary Education Early Childhood-MEd							
Ethnicity	Gender		MAT (200-800)	Essay Content*	Essay Conventions*	Essay Overall*	Performance-Based Evaluation**
NSPE	F	Mean	380.00	3.00	3.00	3.00	3.00
		Std. Deviation	.	.	.	.	.
		Median	380.00	3.00	3.00	3.00	3.00
		N	1	1	1	1	1
	Total	Mean	380.00	3.00	3.00	3.00	3.00
		Std. Deviation	.	.	.	.	.
		Median	380.00	3.00	3.00	3.00	3.00
		N	1	1	1	1	1
Total	F	Mean	380.00	3.00	3.00	3.00	3.00
		Std. Deviation	.	.	.	.	.
		Median	380.00	3.00	3.00	3.00	3.00
		N	1	1	1	1	1
	Total	Mean	380.00	3.00	3.00	3.00	3.00
		Std. Deviation	.	.	.	.	.
		Median	380.00	3.00	3.00	3.00	3.00
		N	1	1	1	1	1

Exceptional Needs-MEd								
Ethnicity	Gender		GRE Analysis (0-6)	GPA	Essay Content*	Essay Conventions*	Essay Overall*	Performance-Based Evaluation**
WHIT	F	Mean	4.00	3.82	4.00	3.50	3.50	4.00
		Std. Deviation	.	.	.00	.71	.71	.00
		Median	4.00	3.82	4.00	3.50	3.50	4.00
		N	1	1	2	2	2	2
	Total	Mean	4.00	3.82	4.00	3.50	3.50	4.00
		Std. Deviation	.	.	.00	.71	.71	.00
		Median	4.00	3.82	4.00	3.50	3.50	4.00
		N	1	1	2	2	2	2
Total	F	Mean	4.00	3.82	4.00	3.50	3.50	4.00
		Std. Deviation	.	.	.00	.71	.71	.00
		Median	4.00	3.82	4.00	3.50	3.50	4.00
		N	1	1	2	2	2	2
	Total	Mean	4.00	3.82	4.00	3.50	3.50	4.00
		Std. Deviation	.	.	.00	.71	.71	.00
		Median	4.00	3.82	4.00	3.50	3.50	4.00
		N	1	1	2	2	2	2

†Rating: 1-Unacceptable,2-Revise/Resubmit,3-Acceptable,4-Exemplary ‡ Rating: 1-Unacceptable,2-Improving,3-Acceptable,4-Exemplary

continued

**GRE Analysis (0-6), MAT (200-800), MAT (0-99), GPA, Professional Goals Essay†: Content, Conventions, Overall; Performance-Based Evaluation‡ \* Gender \* Ethnicity \* Program**

Health Education-MEd							
Ethnicity	Gender		GPA	Essay Content*	Essay Conventions*	Essay Overall*	Performance -Based Evaluation**
NSPE	F	Mean	2.71	3.00	3.00	3.00	4.00
		Std. Deviation	.	.	.	.	.
		Median	2.71	3.00	3.00	3.00	4.00
		N	1	1	1	1	1
	Total	Mean	2.71	3.00	3.00	3.00	4.00
		Std. Deviation	.	.	.	.	.
		Median	2.71	3.00	3.00	3.00	4.00
		N	1	1	1	1	1
PACI	F	Mean	3.62	3.00	3.00	3.00	3.00
		Std. Deviation	.	.	.	.	.
		Median	3.62	3.00	3.00	3.00	3.00
		N	1	1	1	1	1
	Total	Mean	3.62	3.00	3.00	3.00	3.00
		Std. Deviation	.	.	.	.	.
		Median	3.62	3.00	3.00	3.00	3.00
		N	1	1	1	1	1
WHIT	F	Mean	3.31	3.00	3.50	3.00	3.67
		Std. Deviation	.72	.00	.58	.00	.58
		Median	3.30	3.00	3.50	3.00	4.00
		N	4	4	4	4	3
	Total	Mean	3.31	3.00	3.50	3.00	3.67
		Std. Deviation	.72	.00	.58	.00	.58
		Median	3.30	3.00	3.50	3.00	4.00
		N	4	4	4	4	3
Total	F	Mean	3.26	3.00	3.33	3.00	3.60
		Std. Deviation	.63	.00	.52	.00	.55
		Median	3.17	3.00	3.00	3.00	4.00
		N	6	6	6	6	5
	Total	Mean	3.26	3.00	3.33	3.00	3.60
		Std. Deviation	.63	.00	.52	.00	.55
		Median	3.17	3.00	3.00	3.00	4.00
		N	6	6	6	6	5

Middle Level Education-CGS							
Ethnicity	Gender		GPA	Essay Content*	Essay Conventions*	Essay Overall*	Performance -Based Evaluation**
WHIT	F	Mean	3.86	3.25	3.00	3.00	3.25
		Std. Deviation	.03	.50	.00	.00	.50
		Median	3.84	3.00	3.00	3.00	3.00
		N	3	4	4	4	4
	Total	Mean	3.86	3.25	3.00	3.00	3.25
		Std. Deviation	.03	.50	.00	.00	.50
		Median	3.84	3.00	3.00	3.00	3.00
		N	3	4	4	4	4
Total	F	Mean	3.86	3.25	3.00	3.00	3.25
		Std. Deviation	.03	.50	.00	.00	.50
		Median	3.84	3.00	3.00	3.00	3.00
		N	3	4	4	4	4
	Total	Mean	3.86	3.25	3.00	3.00	3.25
		Std. Deviation	.03	.50	.00	.00	.50
		Median	3.84	3.00	3.00	3.00	3.00
		N	3	4	4	4	4

†Rating: 1-Unacceptable,2-Revise/Resubmit,3-Acceptable,4-Exemplary ‡ Rating: 1-Unacceptable,2-Improving,3-Acceptable,4-Exemplary

continued

**GRE Analysis (0-6), MAT (200-800), MAT (0-99), GPA, Professional Goals Essay†: Content, Conventions, Overall; Performance-Based Evaluation‡ \* Gender \* Ethnicity \* Program**

School Psychology-CAGS								
Ethnicity	Gender		GRE Analysis (0-6)	GPA	Essay Content*	Essay Conventions*	Essay Overall*	Performance-Based Evaluation**
WHIT	F	Mean	3.33	3.62	3.00	3.00	3.00	3.00
		Std. Deviation	.58	.31	.00	.00	.00	.00
		Median	3.00	3.44	3.00	3.00	3.00	3.00
		N	3	3	2	2	2	3
	Total	Mean	3.33	3.62	3.00	3.00	3.00	3.00
		Std. Deviation	.58	.31	.00	.00	.00	.00
		Median	3.00	3.44	3.00	3.00	3.00	3.00
		N	3	3	2	2	2	3
Total	F	Mean	3.33	3.62	3.00	3.00	3.00	3.00
		Std. Deviation	.58	.31	.00	.00	.00	.00
		Median	3.00	3.44	3.00	3.00	3.00	3.00
		N	3	3	2	2	2	3
	Total	Mean	3.33	3.62	3.00	3.00	3.00	3.00
		Std. Deviation	.58	.31	.00	.00	.00	.00
		Median	3.00	3.44	3.00	3.00	3.00	3.00
		N	3	3	2	2	2	3

Severe Intellectual Disabilities - CGS								
Ethnicity	Gender		GRE Analysis (0-6)	GPA	Essay Content*	Essay Conventions*	Essay Overall*	Performance-Based Evaluation**
WHIT	F	Mean	3.50	2.90	3.00	3.80	3.20	3.80
		Std. Deviation	.	.42	.71	.45	.45	.45
		Median	3.50	3.05	3.00	4.00	3.00	4.00
		N	1	4	5	5	5	5
	Total	Mean	3.50	2.90	3.00	3.80	3.20	3.80
		Std. Deviation	.	.42	.71	.45	.45	.45
		Median	3.50	3.05	3.00	4.00	3.00	4.00
		N	1	4	5	5	5	5
Total	F	Mean	3.50	2.90	3.00	3.80	3.20	3.80
		Std. Deviation	.	.42	.71	.45	.45	.45
		Median	3.50	3.05	3.00	4.00	3.00	4.00
		N	1	4	5	5	5	5
	Total	Mean	3.50	2.90	3.00	3.80	3.20	3.80
		Std. Deviation	.	.42	.71	.45	.45	.45
		Median	3.50	3.05	3.00	4.00	3.00	4.00
		N	1	4	5	5	5	5

†Rating: 1-Unacceptable,2-Revise/Resubmit,3-Acceptable,4-Exemplary ‡ Rating: 1-Unacceptable,2-Improving,3-Acceptable,4-Exemplary

continued

**GRE Analysis (0-6), MAT (200-800), MAT (0-99), GPA, Professional Goals Essay†: Content, Conventions, Overall; Performance-Based Evaluation‡ \* Gender \* Ethnicity \* Program**

Severe Intellectual Disabilities - MEd								
Ethnicity	Gender		GRE Analysis (0-6)	GPA	Essay Content*	Essay Conventions*	Essay Overall*	Performance-Based Evaluation**
WHIT	F	Mean	4.00	3.84	3.33	3.00	3.00	3.67
		Std. Deviation	.	.23	.58	.00	.00	.58
		Median	4.00	3.97	3.00	3.00	3.00	4.00
		N	1	3	3	3	3	3
	Total	Mean	4.00	3.84	3.33	3.00	3.00	3.67
		Std. Deviation	.	.23	.58	.00	.00	.58
		Median	4.00	3.97	3.00	3.00	3.00	4.00
		N	1	3	3	3	3	3
Total	F	Mean	4.00	3.84	3.33	3.00	3.00	3.67
		Std. Deviation	.	.23	.58	.00	.00	.58
		Median	4.00	3.97	3.00	3.00	3.00	4.00
		N	1	3	3	3	3	3
	Total	Mean	4.00	3.84	3.33	3.00	3.00	3.67
		Std. Deviation	.	.23	.58	.00	.00	.58
		Median	4.00	3.97	3.00	3.00	3.00	4.00
		N	1	3	3	3	3	3

Special Ed Early Childhood-MEd									
Ethnicity	Gender		GRE Analysis (0-6)	GPA	Essay Content*	Essay Conventions*	Essay Overall*	Performance-Based Evaluation**	
ASIA	F	Mean		2.91	3.00	3.00	3.00	4.00	
		Std. Deviation		.	.	.	.	.	
		Median		2.91	3.00	3.00	3.00	4.00	
		N		1	1	1	1	1	
	Total	Mean		2.91	3.00	3.00	3.00	4.00	
		Std. Deviation		.	.	.	.	.	
		Median		2.91	3.00	3.00	3.00	4.00	
		N		1	1	1	1	1	
NSPE	F	Mean			3.00	3.00	3.00	3.00	
		Std. Deviation			.	.	.	.	
		Median			3.00	3.00	3.00	3.00	
		N			1	1	1	1	
	Total	Mean				3.00	3.00	3.00	3.00
		Std. Deviation				.	.	.	.
		Median				3.00	3.00	3.00	3.00
		N				1	1	1	1
WHIT	F	Mean	3.50	3.39	4.00	3.71	3.86	3.60	
		Std. Deviation	.87	.37	.00	.49	.38	.55	
		Median	3.00	3.48	4.00	4.00	4.00	4.00	
		N	3	7	7	7	7	5	
	Total	Mean	3.50	3.39	4.00	3.71	3.86	3.60	
		Std. Deviation	.87	.37	.00	.49	.38	.55	
		Median	3.00	3.48	4.00	4.00	4.00	4.00	
		N	3	7	7	7	7	5	
Total	F	Mean	3.50	3.33	3.78	3.56	3.67	3.57	
		Std. Deviation	.87	.38	.44	.53	.50	.53	
		Median	3.00	3.37	4.00	4.00	4.00	4.00	
		N	3	8	9	9	9	7	
	Total	Mean	3.50	3.33	3.78	3.56	3.67	3.57	
		Std. Deviation	.87	.38	.44	.53	.50	.53	
		Median	3.00	3.37	4.00	4.00	4.00	4.00	
		N	3	8	9	9	9	7	

†Rating: 1-Unacceptable,2-Revise/Resubmit,3-Acceptable,4-Exemplary ‡ Rating: 1-Unacceptable,2-Improving,3-Acceptable,4-Exemplary

continued

**GRE Analysis (0-6), MAT (200-800), MAT (0-99), GPA, Professional Goals Essay†: Content, Conventions, Overall; Performance-Based Evaluation‡ \* Gender \* Ethnicity \* Program**

Special Education Concentration in Urban Multiculturalism-MED									
Ethnicity	Gender		MAT (200-800)	GPA	Essay Content*	Essay Conventions*	Essay Overall*	Performance-Based Evaluation**	
NSPE	F	Mean		3.37	3.33	3.33	3.33	3.67	
		Std. Deviation		.	.58	.58	.58	.58	
		Median		3.37	3.00	3.00	3.00	4.00	
		N		1	3	3	3	3	
	Total	Mean		3.37	3.33	3.33	3.33	3.67	
		Std. Deviation		.	.58	.58	.58	.58	
		Median		3.37	3.00	3.00	3.00	4.00	
WHIT	F	Mean	378.00	3.49	3.11	3.11	3.11	3.50	
		Std. Deviation	.	.35	.47	.47	.47	.62	
		Median	378.00	3.51	3.00	3.00	3.00	4.00	
		N	1	17	18	18	18	18	
	Total	Mean		378.00	3.49	3.11	3.11	3.11	3.50
		Std. Deviation		.	.35	.47	.47	.47	.62
		Median		378.00	3.51	3.00	3.00	3.00	4.00
Total	F	Mean	378.00	3.49	3.14	3.14	3.14	3.52	
		Std. Deviation	.	.34	.48	.48	.48	.60	
		Median	378.00	3.48	3.00	3.00	3.00	4.00	
		N	1	18	21	21	21	21	
	Total	Mean		378.00	3.49	3.14	3.14	3.14	3.52
		Std. Deviation		.	.34	.48	.48	.48	.60
		Median		378.00	3.48	3.00	3.00	3.00	4.00
		N	1	18	21	21	21	21	

Special Education Severe Profound Disabilities-MED										
Ethnicity	Gender		GRE Analysis (0-6)	MAT (200-800)	GPA	Essay Content*	Essay Conventions*	Essay Overall*	Performance-Based Evaluation**	
NSPE	F	Mean		385.00	3.75	3.50	3.00	3.00	4.00	
		Std. Deviation		.00	.00	.71	.00	.00	.00	
		Median		385.00	3.75	3.50	3.00	3.00	4.00	
		N		2	2	2	2	2	2	
	Total	Mean		385.00	3.75	3.50	3.00	3.00	4.00	
		Std. Deviation		.00	.00	.71	.00	.00	.00	
		Median		385.00	3.75	3.50	3.00	3.00	4.00	
		N	2	2	2	2	2	2		
WHIT	F	Mean	5.00			3.50	4.00	3.50	4.00	
		Std. Deviation	.			.71	.00	.71	.00	
		Median	5.00			3.50	4.00	3.50	4.00	
		N	1			2	2	2	2	
	Total	Mean		5.00			3.50	4.00	3.50	4.00
		Std. Deviation		.			.71	.00	.71	.00
		Median		5.00			3.50	4.00	3.50	4.00
		N	1			2	2	2	2	
Total	F	Mean	5.00	385.00	3.75	3.50	3.50	3.25	4.00	
		Std. Deviation	.	.00	.00	.58	.58	.50	.00	
		Median	5.00	385.00	3.75	3.50	3.50	3.00	4.00	
		N	1	2	2	4	4	4	4	
	Total	Mean		5.00	385.00	3.75	3.50	3.50	3.25	4.00
		Std. Deviation		.	.00	.00	.58	.58	.50	.00
		Median		5.00	385.00	3.75	3.50	3.50	3.00	4.00
		N	1	2	2	4	4	4	4	

†Rating: 1-Unacceptable,2-Revise/Resubmit,3-Acceptable,4-Exemplary ‡ Rating: 1-Unacceptable,2-Improving,3-Acceptable,4-Exemplary

continued

**GRE Analysis (0-6), MAT (200-800), MAT (0-99), GPA, Professional Goals Essay†: Content, Conventions, Overall; Performance-Based Evaluation‡ \* Gender \* Ethnicity \* Program**

			Special Education-MED						
Ethnicity	Gender		GRE Analysis (0-6)	GPA	Essay Content*	Essay Conventions*	Essay Overall*	Performance-Based Evaluation**	
BLAC	F	Mean	2.00	3.02	3.00	3.00	3.00	4.00	
		Std. Deviation	.	.	.00	.00	.00	.00	
		Median	2.00	3.02	3.00	3.00	3.00	4.00	
	Total	N	1	1	2	2	2	2	
		Mean	2.00	3.02	3.00	3.00	3.00	4.00	
		Std. Deviation	.	.	.00	.00	.00	.00	
NSPE	F	Mean		2.75	4.00	4.00	4.00	4.00	
		Std. Deviation		.	.	.	.	.	
		Median		2.75	4.00	4.00	4.00	4.00	
	Total	N		1	1	1	1	1	
		Mean		2.75	4.00	4.00	4.00	4.00	
		Std. Deviation		.	.	.	.	.	
WHIT	F	Mean		3.58	3.75	3.25	3.50	3.50	
		Std. Deviation		.59	.50	.50	.58	.58	
		Median		3.89	4.00	3.00	3.50	3.50	
	Total	N		3	4	4	4	4	
		Mean		3.58	3.75	3.25	3.50	3.50	
		Std. Deviation		.59	.50	.50	.58	.58	
Total	F	Mean	2.00	3.30	3.57	3.29	3.43	3.71	
		Std. Deviation	.	.57	.53	.49	.53	.49	
		Median	2.00	3.02	4.00	3.00	3.00	4.00	
	Total	N	1	5	7	7	7	7	
		Mean	2.00	3.30	3.57	3.29	3.43	3.71	
		Std. Deviation	.	.57	.53	.49	.53	.49	
		Median	2.00	3.02	4.00	3.00	3.00	4.00	
		N	1	5	7	7	7		

			Teaching English as Second Language-MED						
Ethnicity	Gender		GRE Analysis (0-6)	GPA	Essay Content*	Essay Conventions*	Essay Overall*	Performance-Based Evaluation**	
HISP	F	Mean		4.00	3.00	3.00	3.00	4.00	
		Std. Deviation		.	.	.	.	.	
		Median		4.00	3.00	3.00	3.00	4.00	
	Total	N		1	1	1	1	1	
		Mean		4.00	3.00	3.00	3.00	4.00	
		Std. Deviation		.	.	.	.	.	
WHIT	F	Mean	2.50	2.93	3.00	3.00	3.00	3.67	
		Std. Deviation	.	.02	.00	.00	.00	.58	
		Median	2.50	2.93	3.00	3.00	3.00	4.00	
	M	N	1	2	3	3	3	3	
		Mean			3.00	3.00	3.00	3.00	
		Std. Deviation			.	.	.	.	
Total	Median			3.00	3.00	3.00	3.00		
	N		1	1	1	1	1		
	Mean	2.50	2.93	3.00	3.00	3.00	3.50		
Total	F	Std. Deviation	.	.02	.00	.00	.00	.58	
		Median	2.50	2.93	3.00	3.00	3.00	3.50	
		N	1	2	4	4	4	4	
	M	Mean	2.50	3.28	3.00	3.00	3.00	3.75	
		Std. Deviation	.	.62	.00	.00	.00	.50	
		Median	2.50	2.94	3.00	3.00	3.00	4.00	
Total	N	1	3	4	4	4	4		
	Mean	2.50	3.28	3.00	3.00	3.00	3.60		
	Std. Deviation	.	.62	.00	.00	.00	.55		
		Median	2.50	2.94	3.00	3.00	3.00	4.00	
		N	1	3	5	5	5		

†Rating: 1-Unacceptable,2-Revise/Resubmit,3-Acceptable,4-Exemplary ‡ Rating: 1-Unacceptable,2-Improving,3-Acceptable,4-Exemplary

continued

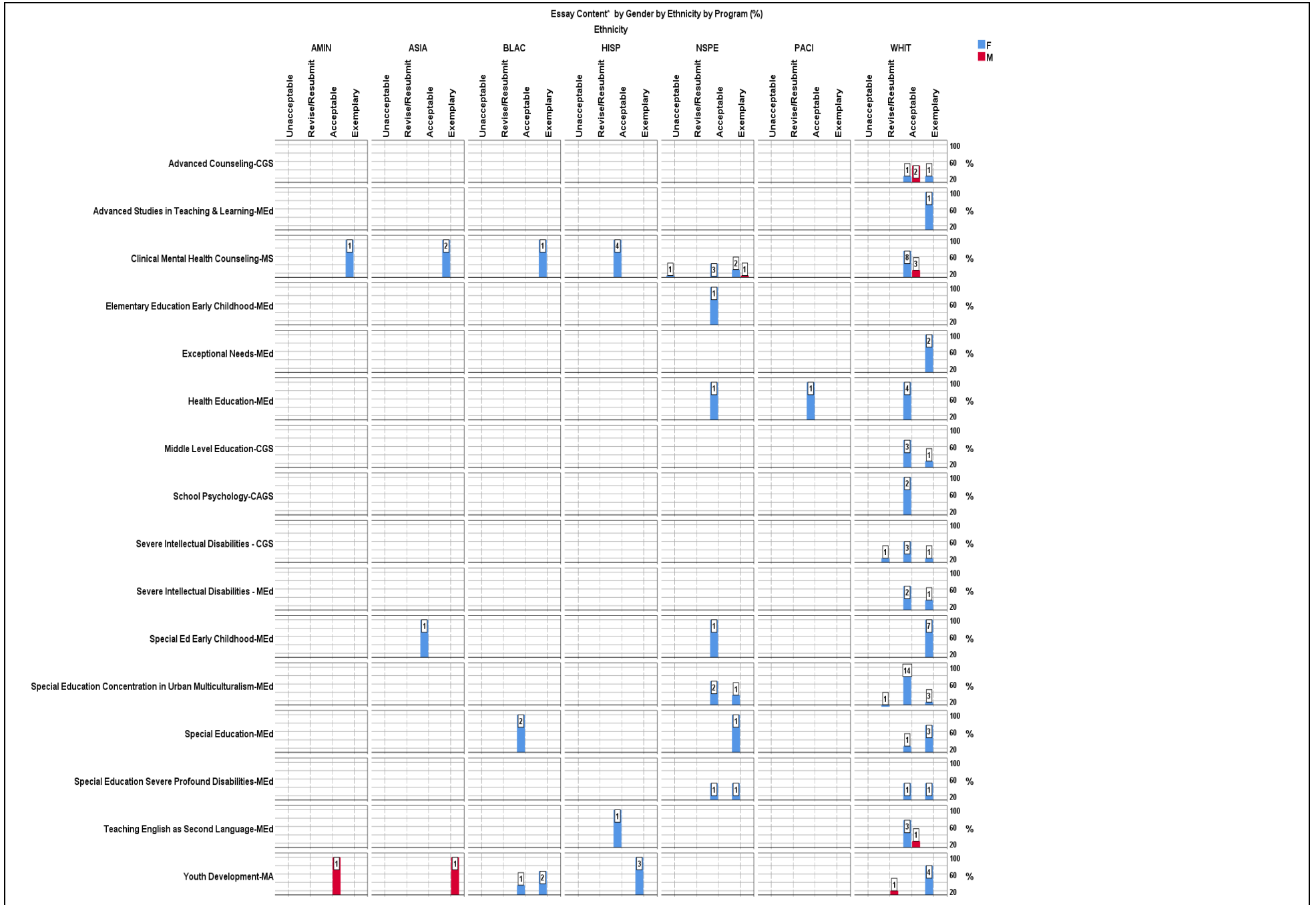
**GRE Analysis (0-6), MAT (200-800), MAT (0-99), GPA, Professional Goals Essay†: Content, Conventions, Overall; Performance-Based Evaluation‡ \* Gender \* Ethnicity \* Program**

Youth Development-MA						
Ethnicity	Gender		GPA	Essay Content*	Essay Conventions*	Essay Overall*
AMIN	M	Mean	3.18	3.00	3.00	3.00
		Std. Deviation	.	.	.	.
		Median	3.18	3.00	3.00	3.00
		N	1	1	1	1
	Total	Mean	3.18	3.00	3.00	3.00
		Std. Deviation	.	.	.	.
		Median	3.18	3.00	3.00	3.00
ASIA	M	Mean	3.00	4.00	3.00	4.00
		Std. Deviation	.	.	.	.
		Median	3.00	4.00	3.00	4.00
		N	1	1	1	1
	Total	Mean	3.00	4.00	3.00	4.00
		Std. Deviation	.	.	.	.
		Median	3.00	4.00	3.00	4.00
BLAC	F	Mean	3.37	3.67	3.33	3.67
		Std. Deviation	.17	.58	.58	.58
		Median	3.37	4.00	3.00	4.00
		N	2	3	3	3
	Total	Mean	3.37	3.67	3.33	3.67
		Std. Deviation	.17	.58	.58	.58
		Median	3.37	4.00	3.00	4.00
HISP	F	Mean	2.98	4.00	3.33	3.67
		Std. Deviation	.28	.00	.58	.58
		Median	3.09	4.00	3.00	4.00
		N	3	3	3	3
	Total	Mean	2.98	4.00	3.33	3.67
		Std. Deviation	.28	.00	.58	.58
		Median	3.09	4.00	3.00	4.00
WHIT	F	Mean	3.65	4.00	4.00	4.00
		Std. Deviation	.49	.00	.00	.00
		Median	3.65	4.00	4.00	4.00
		N	2	4	4	4
	M	Mean	3.03	2.00	2.00	2.00
		Std. Deviation	.	.	.	.
		Median	3.03	2.00	2.00	2.00
		N	1	1	1	1
	Total	Mean	3.44	3.60	3.60	3.60
		Std. Deviation	.50	.89	.89	.89
		Median	3.30	4.00	4.00	4.00
		N	3	5	5	5
Total	F	Mean	3.28	3.90	3.60	3.80
		Std. Deviation	.41	.32	.52	.42
		Median	3.25	4.00	4.00	4.00
		N	7	10	10	10
	M	Mean	3.07	3.00	2.67	3.00
		Std. Deviation	.09	1.00	.58	1.00
		Median	3.03	3.00	3.00	3.00
		N	3	3	3	3
	Total	Mean	3.22	3.69	3.38	3.62
		Std. Deviation	.35	.63	.65	.65
	Median	3.19	4.00	3.00	4.00	
	N	10	13	13	13	

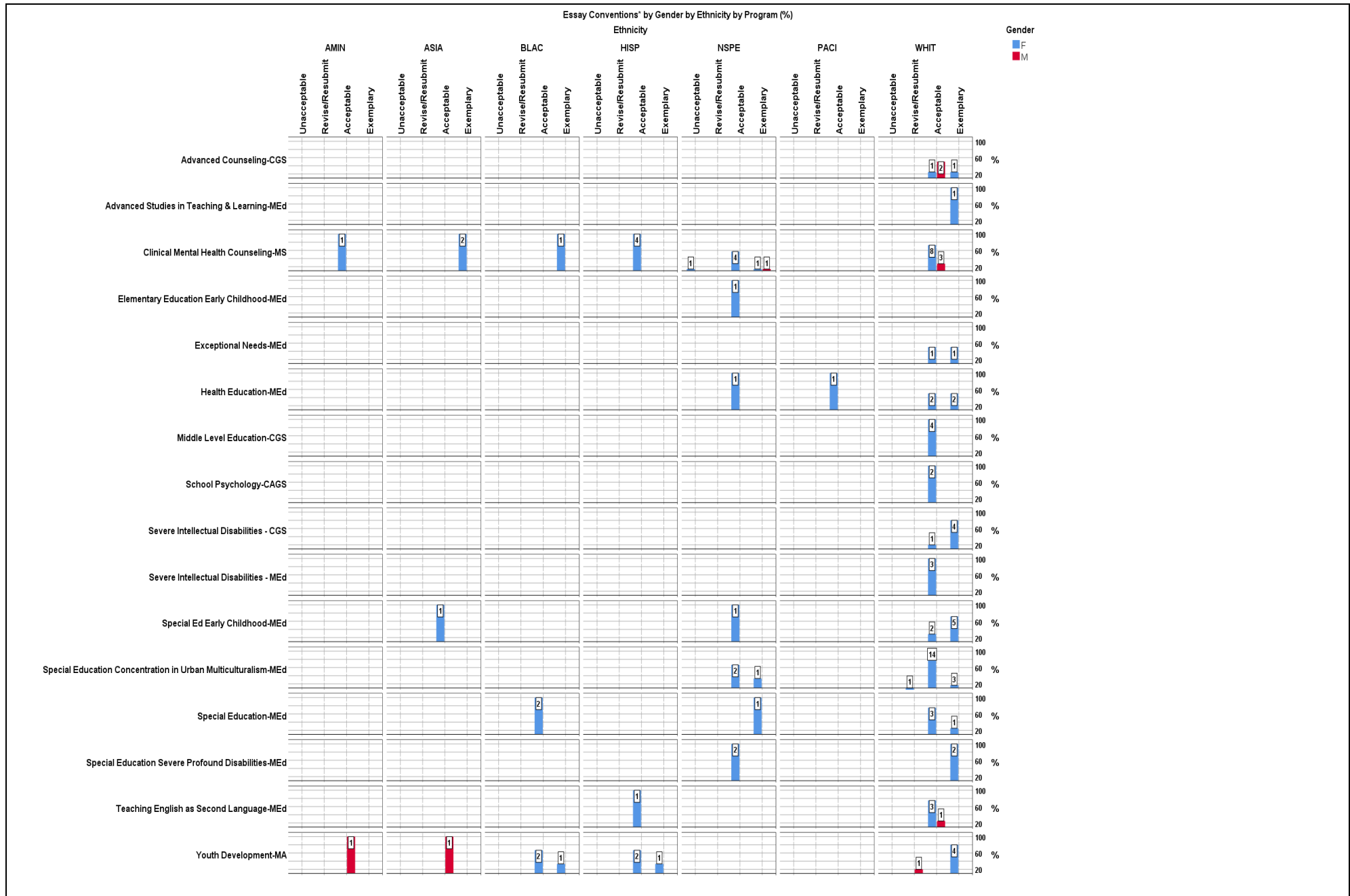
†Rating: 1-Unacceptable,2-Revise/Resubmit,3-Acceptable,4-Exemplary ‡ Rating: 1-Unacceptable,2-Improving,3-Acceptable,4-Exemplary



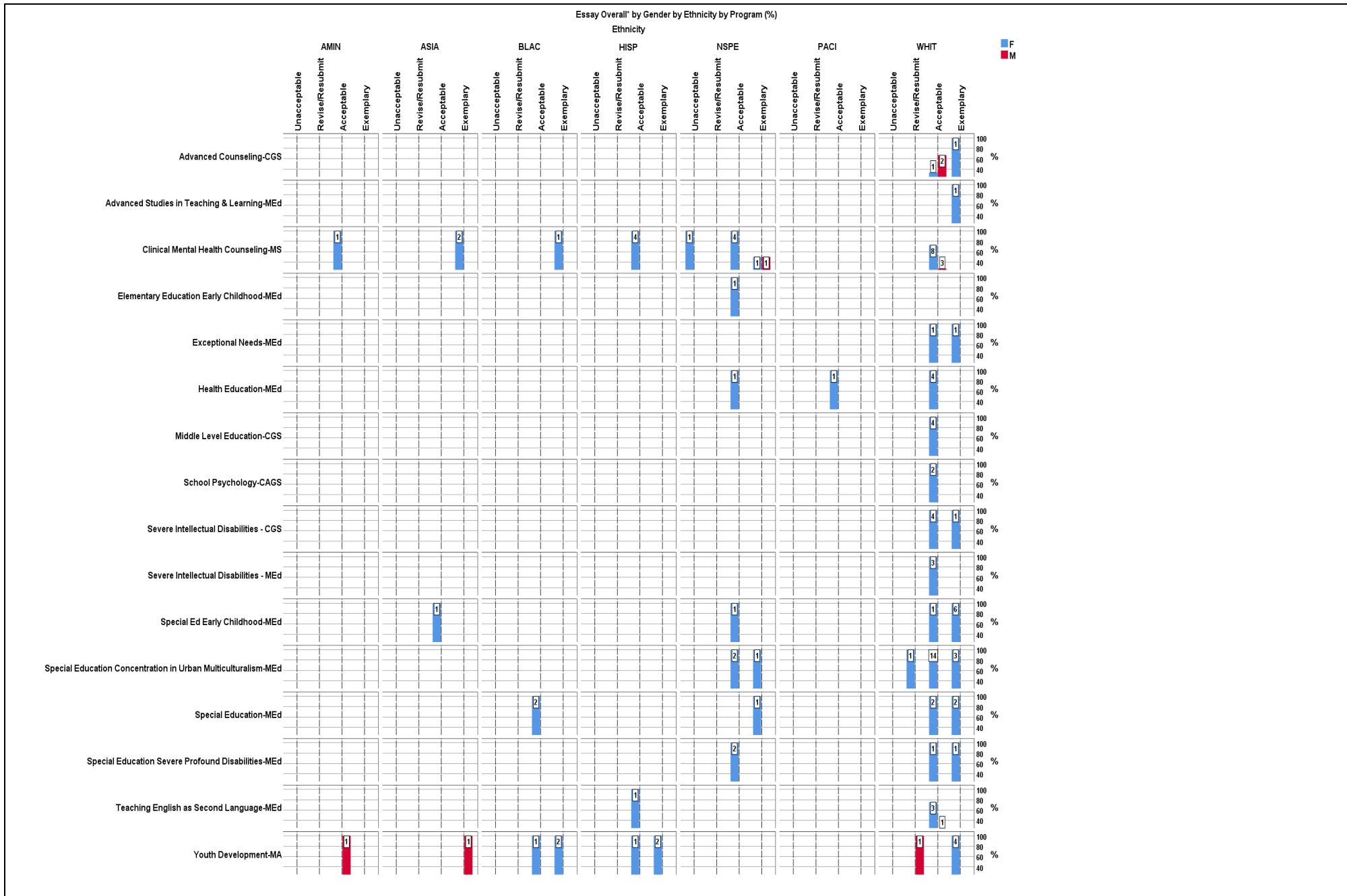
# Professional Goals Essay: *Content* rating \* Gender \* Ethnicity \* Program (Graph)



# Professional Goals Essay: *Conventions* rating \* Gender \* Ethnicity \* Program (Graph)



# Professional Goals Essay: *Overall* rating \* Gender \* Ethnicity \* Program (Graph)



# Performance-Based Evaluation rating \* Gender \* Ethnicity \* Program (Graph)

