

Early Enrollment Program Newsletter

Fall/Winter
2015/2016
Issue #14

Office Staff

Associate Directors:

Marianne Douglas
Marianne Gianfrancesco
Valerie Girouard
Susan Poor

Program Secretary:

Jane Lindberg

Student Assistant:

Jasmine Rivas

Office Information

Phone:

401-456-8857

Fax:

401-456-8188

Email:

eep@ric.edu

Webpage:

www.ric.edu/eep

Mailing Address:

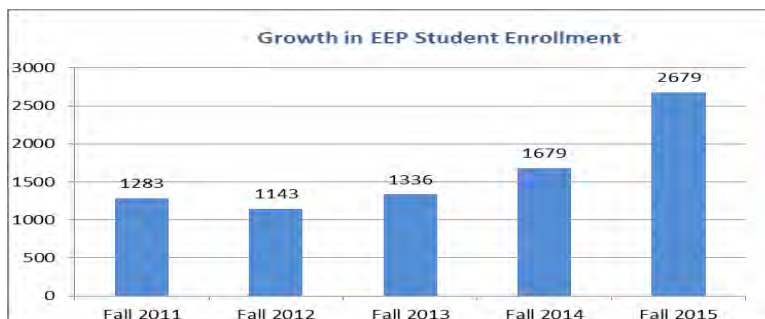
Early Enrollment Program
Rhode Island College
600 Mount Pleasant Avenue
Forman Center 204
Providence, RI 02908



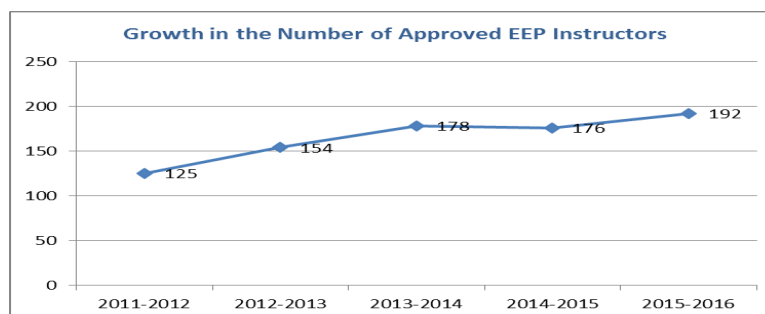
EEP Numbers Soar



The 2015-2016 school year started with 48 high schools participating in the Early Enrollment Program: 39 Rhode Island public schools, 4 private schools and 5 Massachusetts high schools. While the number of high schools was not a surprise, the enrollment numbers were staggering for fall and year long courses. In great part the increase occurred because the course fees for students in RI public schools were covered by a state initiative, the **Governor's Prepare RI Dual Enrollment Fund**. It is evident that public school students in RI are taking this opportunity very seriously. In the fall of 2014 the total number of students enrolled in fall and year long courses was 1679; this year that number increased to 2679 - an increase of 60%...and that does not include Spring registrations!



It is not only in the area of student registration that there has been an increase! We are impressed by the number of high school teachers who for the first time sought approval to teach an EEP course at their respective high schools for the 2015-2016 school year. Teacher participation reached an all-time high with a 9% increase from the fall of 2014 and 53.6% since the fall of 2011.



We congratulate the students who embraced this wonderful opportunity this year and all the teachers and on-site coordinator who support their students and the EEP program.

Marianne Gianfrancesco to retire this year



Marianne Gianfrancesco will retire this June after working as Associate Director of the Early Enrollment Program for 16 years. Once she graduated from RIC in 1970, Marianne moved up the road to North Providence High School where she taught, mentored and nurtured her students. At NPH she taught English from 1970 until she retired in 2000 and served as department chair for many of those years. During her tenure at NPH she and several other educational leaders, were the force behind the creation of EEP in 1980.

Just a few of her related educational experiences include being a board member of the Rhode Island Committee for the Humanities, a reader for the National Teacher Exam, a mentor for RISE (Rhode Islanders Sponsoring Education) where she was honored as Mentor of the Year, and as a consultant for the Rhode Island Department of Education, Educational Testing Service and College Board. She also served on the boards of the RI Writing Project, the RI Council of Teachers of English and the New England Council of Teachers of English. Marianne was also an adjunct English and writing instructor at RIC and URI.

After retiring from NPH, Marianne became an EEP Associate Director, working diligently to make the program thrive and grow. From 6 original schools in 1980 to the current 48, Marianne has contributed greatly to the expansion and success of the program. We will miss her total dedication to the EEP, her organizational skills, her problem solving and her productivity but most importantly, her warmth, her wit and her wisdom! Good luck, Marianne.



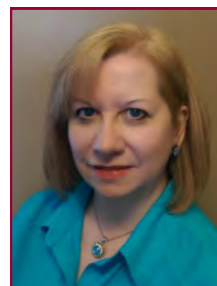
Meet our newest Associate Directors



Marianne Douglas, a Rhode Island College graduate, joined us for the fall semester. She is a former teacher at Mt. Hope High School in Bristol where she taught math and Strategies for Success, an anti-bullying/leadership/success class she created.

She was named school and district Teacher of the Year for the **Strategies** program and to date has received the Jefferson Award and the Rhode Island College Alumni Service Award. She was a national finalist in Cable in the Classroom Leaders in Learning and was recognized as a hero for the **Strategies** program by the Oprah Winfrey Show.

She is passionate about helping teens succeed through her work at Rhode Island College with the PEP program and now EEP, with her motivational speaking at local high schools and at the RI State DECA conference.



Valerie Girouard is also a graduate of Rhode Island College and joins us in January 2016. She taught in the Woonsocket School system before the birth of her three children.

She has managed a medical office for the past twenty-one years and has been a real estate broker for the past twenty-six years currently with HomeSmart Professionals RE with offices in Warwick and soon to be in Lincoln. She works with buyers and sellers and specializes in the northern Rhode Island real estate market.

She is looking forward to working with the Early Enrollment Program at Rhode Island College.

Meet the New EEP Liaisons

Spanish - *Eliani Basile* is a specialist in Second Language Acquisition Theory and Sociolinguistics. She joined the faculty of RIC in 2014 after teaching several years in colleges and universities in Massachusetts. She teaches courses in Spanish, Applied Linguistics, Sociolinguistics and Foreign Language Pedagogy (Practicum and Seminar Elementary, Middle and Secondary Education). She is also responsible for working with student teachers in the BA and MAT programs in World Language Education. Her current research interests focus on bilingualism and language contact—phenomena.

Mathematics - *Mark DiPippo* received his masters degree from Rhode Island College in 2005 and has been teaching at RIC since then, both in a part time and full time capacity. He is currently studying difference equations at the University of Rhode Island and plans on defending his PhD thesis this spring.

Anthropology - *Pierre Morenon* is an Associate Professor in the Department of Anthropology where he has taught since 1978, completing over 100 archaeological projects in Rhode Island.

These projects have varied from studies of children's play through artifacts recovered in excavation at the State Home and School in Providence to evaluations of ancient Narragansett sites. Most studies have been funded and many have been completed with Rhode Island College students. He has also lived and completed local research in Egypt, New Mexico and Texas.

French - *Vincent Renou* has taught both art and French at all levels in Louisiana, New York City, Philadelphia and Australia. He worked for twenty-one years at the French International School of Philadelphia eventually becoming Assistant Director. He served as curriculum consultant for the Opera Company of Philadelphia and school evaluator for the Middle States Association of Schools and Colleges. He is a ceramicist with exhibits in New York, Philadelphia and Tiverton. His passions include the arts, contemporary fiction and poetry, independent movies, fashion, cooking, gardening and travel.

Meet Student Assistant Jasmine Rivas



Jasmine, a senior at RIC, is our student assistant for this year. A person with many interests, her major is in youth development with a concentration in theater and Japanese language and culture. She has already completed the certificate program in non-profit studies.

Jasmine is a graduate of Central Falls High School and for the last two summers has worked as a teacher assistant and technical advisor for Write On Sports, a two week summer sports writing workshop for inner city middle students. She has also worked at Dr. Earl F. Calcutt Middle School (Central Falls) with the after school Japanese Club. We are pleased to have such a personable and focused young woman on our staff!



Congratulations!

We are pleased to announce that the following teachers are among the newest EEP instructors for 2015-2016:

Elizabeth Copely - Biology 111 - Rogers High School

Frank Fusco - Finance 230 - North Kingstown High School

Florence Gabaude - French 113 - Attleboro High School

Debra Grant - French 113 - Foxborough High School

Susan Hoaglund - Music 201 - The Greene School

Shelley Krom - Math 117E - Exeter/West Greenwich High School

Sheila Lagasse - Chemistry 103,104 - Cranston High School West

Claire Leatham - French 113, 114 - Chariho High School

Patricia Lindley - Math 117E - St. Mary Academy/Bay View

Michael Lobdell - Biology 111 - Pilgrim High School

Eli Mello - Chemistry 103, 104 - Seekonk High School

Taylor Rabbitt - History 118, 119 - North Providence High School



Kurt Van Dexter - Art 150 - The Greene School

We'd also like to welcome back to the EEP "Active Ranks"

Jonathan Goodman - English 118E - Hope High School

Stephen Morrison - Music 201 - North Providence High School

Cheryl Murray - Finance 230 - Lincoln High School

Paul Shawver - Math 117E - LaSalle Academy

Congratulations to the following teachers who expanded course offerings at their school:

David Bizier - Management 100 - Cranston High School East

Dan Coyne - Music 150 - Ponaganset High School

Sean Doyle - Tech 216 - West Warwick High School

Richard Marchetti - Music 118, 203 - West Warwick High School

Judith McNulty - History 119 - East Providence High School

John Pecoraro - Spanish 113 - Chariho High School

David Upegui - Biology 112 - Central Falls High School

Welcome to the new EEP on-sites coordinators at the following high schools:

Barbara Crudale - South Kingstown High School

Debra Grant - Foxborough High School

Melissa Hall - The Greene School

Amy Hubertus - Exeter/West Greenwich

Kristen Jahnz - Cumberland High School

Ann Lynch - Central Falls High School

William Pepin - North Smithfield High School

Anne-Marie Van Nieuwenhuize - Lincoln High School



We extend our deepest appreciation to former on-site coordinators and Directors of Guidance **Carol Michaud** who retired from Lincoln High School and **Rose Majeika** who retired from South Kingstown High School. Both were invaluable advocates and resources for EEP and for their students. We offer our sincerest congratulations to both Carol and Rose and wish them a relaxing retirement.

EEP BULLETIN BOARD



Important Notice

Important Dates:

1. **March 1, 2016**
Registrations for SPRING 2016 courses should be sent to us by *March 1*. Students **MUST** complete the registration process if they want second semester credits for their EEP courses.
2. **April 15, 2016 (Must be postmarked by April 15, 2016)**
Scholarship applications for EEP students who will be attending Rhode Island College
3. **May 1, 2016**
Deadline to submit information for potential new courses and new teachers for the upcoming school year.

How your students may request a RIC Transcript

Go to:
<http://www.ric.edu/recordsoffice/transcripts.php>

Be sure to check the box marked "EEP."

Students may submit multiple forms if they need transcripts for more than one school. We recommend that they also have one sent to themselves.




WANTED!

We'd love to highlight the work of your EEP students Here's how:

Send us your stories, anecdotes, student quotes about their experiences or special projects in your EEP classes.

Keep your camera handy!
Email us photos (in jpg. format) or videos of your students and yourself at any time during the year. (We will need parental permission to use any photo or video of an EEP student. Email us at eep@ric.edu for a permission form)

We may use them in our upcoming newsletters, brochures or on our website!