



Rhode Island College has always been an educational frontrunner, a producer of talent, advocate of hope and champion of the state's human potential and it will continue to honor this vital legacy for many years to come.

— President Frank D. Sánchez

Mission

To be a force for positive change in the lives of our students and in the state and region, allowing them to gain the knowledge, skills and insight necessary to contribute to, and benefit from, our ever-evolving culture and economy.*

Vision

To be recognized as a thought leader among public colleges, providing industry-leading learning experiences and using an entrepreneurial approach to prepare students for a 21st century workforce.*

Core Values

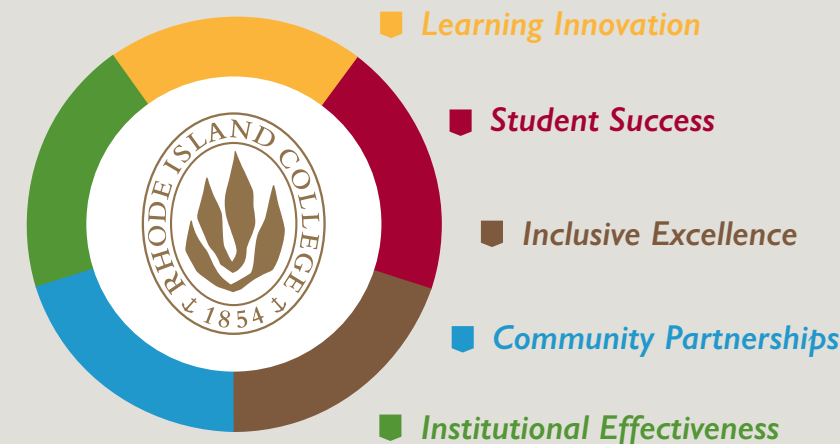
- ~ Excellence and Innovation
- ~ Access and Opportunity
- ~ Student-Centered
- ~ Diversity and Inclusion
- ~ State and Community Leadership
- ~ Transparency

Rhode Island College's three-year strategic action plan, *Affirming our Strength, Building our Future*, offers a roadmap to success in a new era. It capitalizes on our great strengths and positions us to make a more significant impact on the critical issues facing our institution, our state, and our region. Guiding the successful implementation of this action plan are five strategic pillars: Learning Innovation, Student Success, Inclusive Excellence, Community Partnerships and Institutional Effectiveness.

* See the full version of RIC's Strategic Action Plan for expanded RIC Mission and Vision Statements: ric.edu/strategicplan


Strategic Framework

The five pillars of this strategic plan will help focus our collective attention on our most important institutional goals and serve as the guiding framework as we move Rhode Island College forward. Through the successful implementation of these pillars, RIC will better prepare students for a 21st century workforce and build on our reputation for quality, value and innovation.



Implementation

Everything we do will be for the benefit of our students and is measured by the advancement of the strategic pillars outlined here. By involving the RIC community in the development of this plan, we have created a shared understanding and ownership of the future vision for this college. Each of the goals within this plan outlines priority initiatives and is associated with an internal implementation plan and an accountable senior manager.

 RHODE ISLAND COLLEGE
Office of the President
600 Mount Pleasant Avenue
Providence, RI 02908-1996



RHODE ISLAND COLLEGE
***Affirming our Strength
Building our Future***



Strategic Action Plan Online

View the full version of RIC's Strategic Action Plan at ric.edu/strategicplan



Three-Year Strategic Action Plan

Executive Summary

Learning Innovation



Strategic Action Plan Online

View the full version of RIC's Strategic Action Plan at ric.edu/strategicplan

GOAL

RIC will create a culture of learning innovation that involves and supports our students, faculty and staff in a dynamic and stimulating environment of critical thinking and inquiry.

- 🔄 Make greater strategic investments in technology
- 🔄 Expand active teaching strategies
- 🔄 Leverage academic expertise in high-demand areas
- 🔄 Increase experiential learning opportunities

Student Success



GOAL

RIC will support student success through high-quality learning with effective and engaging delivery of services. All students will be provided with an enriching, purposeful and attainable pathway to graduation.

- 🔄 Create a supportive organizational alignment
- 🔄 Invest in first-year experience programming to enhance campus experience
- 🔄 Develop a comprehensive enrollment management plan providing strategies for graduate, international, adult and traditional enrollment growth

Inclusive Excellence



GOAL

RIC will promote an inclusive campus culture in which every participant will grow in their understanding of the benefits and value of diversity and be better prepared to prosper in a world that is increasingly both culturally rich and complex.

- 🔄 Increase diversity among faculty, staff and administration
- 🔄 Review and strengthen key policies and practices
- 🔄 Improve campus climate for all members of the RIC community

Community Partnerships



GOAL

RIC will actively seek to partner with organizations, governmental entities, foundations, and businesses to promote community well-being and provide beneficial opportunities for our students, faculty and staff.

- 🔄 Identify partners that support RIC's highest priority initiatives
- 🔄 Build strategic national, state and local partnerships

Institutional Effectiveness



GOAL

RIC will employ technology, transparency, communication, collaboration and innovation in our management of information and resources to foster a shared commitment to seeking the best and highest use of resources to achieve success.

- 🔄 Strengthen capacity for effective, transparent fiscal resource management
- 🔄 Establish a comprehensive master plan to address the campus' long-term needs
- 🔄 Recognize alumni as a critical resource for institutional growth